

PROTECTION CAPS FOR BIR, SERIES

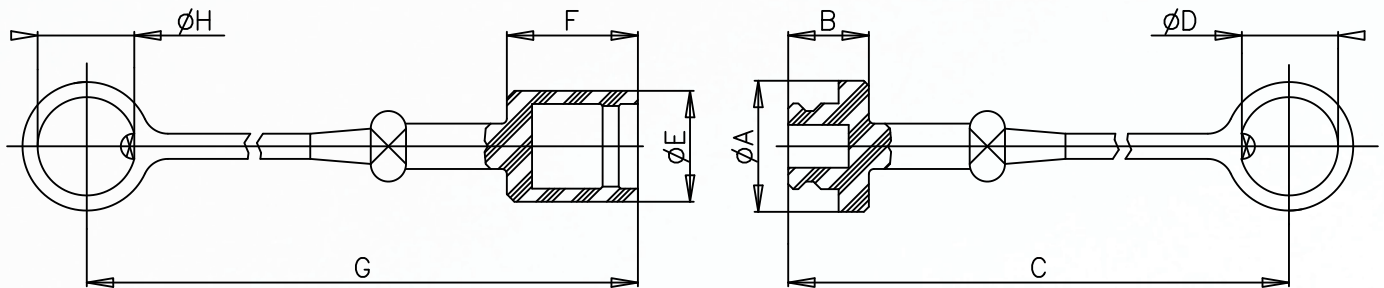
Protective caps are always recommended to protect the couplings from damage or dirt inclusion, and increase the product life. This is particularly important in mobile applications where contamination can enter the coupling and compromise the function. The caps for BIR, IR-V and IR series are manufactured in PVC rubber and they are available in several colors.



OVERALL DIMENSIONS PROTECTION CAPS FOR "BIR" SERIES

CAP FOR MALE COUPLING
Tappo per innesto maschio

CAP FOR FEMALE COUPLING
Tappo per innesto femmina



PVC CAPS

- Available in following colors: Red, yellow, blue, black and green.
- Temperature range: from -20 °C to +100 °C (from -4 °F to +212 °F).

Description	Coupling	Unit	A	B	C	D	E	F	G	H	Unit	Weight
T.M.B. 1/4	F-BIR14	mm Inch	20 0,79	16 0,63	223 8,78	19,5 0,77	- -	- -	- -	- -	Kg lb	0,014 0,03
T.F.B. 1/4	M-BIR14	mm Inch	- -	- -	- -	- -	18 0,71	23 0,91	230 9,06	19,5 0,77	Kg lb	0,013 0,03
T.M.B. 3/8	F-BIR38	mm Inch	26 1,02	16 0,63	223 8,78	22,5 0,89	- -	- -	- -	- -	Kg lb	0,018 0,04
T.F.B. 3/8	M-BIR38	mm Inch	- -	- -	- -	- -	24 0,94	27 1,06	234 9,21	22,5 0,89	Kg lb	0,015 0,03
T.M. 1/2	F-BIR12 F-IR12	mm Inch	33 1,30	20 0,79	273 10,75	28 1,10	- -	- -	- -	- -	Kg lb	0,020 0,04
T.F. 1/2	M-BIR12 M-IR12	mm Inch	- -	- -	- -	- -	29 1,14	32 1,26	239 9,41	28 1,10	Kg lb	0,022 0,05
T.M.B. 3/4	F-BIR34	mm Inch	40 1,57	19 0,75	266 10,47	32 1,26	- -	- -	- -	- -	Kg lb	0,025 0,06
T.F.B. 3/4	M-BIR34	mm Inch	- -	- -	- -	- -	36 1,42	41 1,61	288 11,34	32 1,26	Kg lb	0,027 0,06
T.M.B. 1	F-BIR100	mm Inch	45 1,77	24 0,94	271 10,67	38 1,50	- -	- -	- -	- -	Kg lb	0,040 0,09
T.F.B. 1	M-BIR100	mm Inch	- -	- -	- -	- -	42 1,65	48 1,89	295 11,61	38 1,50	Kg lb	0,037 0,08