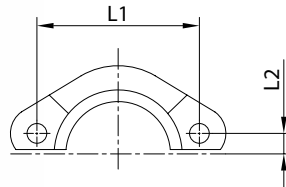


## SEMIFLANGIA SERIE 3000 PSI - SAE J518

## SAE SPLIT - FLANGE CLAMPS 3000 PSI SERIES - SAE J518

Codice/Code: 7056..

Tipo/Type: FL



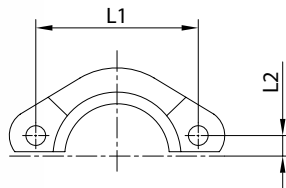
CODICE Code	Ø flangia flange Ø	L1	L2
705601	1/2	38,1	8,7
705602	3/4	47,6	11,1
705603	1	52,4	13,1
705604	1 1/4	58,7	15,1
705605	1 1/2	69,9	17,8
705606	2	77,8	21,4

## SEMIFLANGIA SERIE 6000 PSI - SAE J518

## SAE SPLIT - FLANGE CLAMPS 6000 PSI SERIES - SAE J518

Codice/Code: 7057..

Tipo/Type: FS



CODICE Code	Ø flangia flange Ø	L1	L2
705701	1/2	40,5	9,1
705702	3/4	50,8	11,9
705703	1	57,2	13,9
705704	1 1/4	66,7	15,9
705705	1 1/2	79,4	18,2
705706	2	96,8	22,2