



FILTR

str. A2



REDUKTOR

str. A3



NAOLEJACZ

str. A4



FILTROREDUKTOR

str. A5



**FILTROREDUKTOR
NAOLEJACZ**

str. A6



**FILTR
REDUKTOR
NAOLEJACZ**

str. A7

ELEMENTY PRZYGOTOWANIA SPRĘŻONEGO POWIETRZA

FILTR SPRĘŻONEGO POWIETRZA
F

Medium: powietrze

Temperatura pracy: od +5°C do +60°C

Wkładka filtra: 25µm /opcjonalnie 5 µm/

Materiał korpusu: aluminium

Pozycja pracy: pionowa

Spust kondensatu: ręczny typ EF1000-EF2000

półautomatyczny typ EF3000-EF5000

KOD TOWARU	TYP	GWINT BSP	PRZEPŁYW [L/min]	CIŚNIENIE PRACY [MPa]	CIŚNIENIE MAX. [MPa]	POJEMNOŚĆ ZBIORNIKA [ml]	WAGA [kg]	TYP UCHWYTU FILTRA
PPAFM510/A	EF1000-M5	M5	110	1.0	1.5	4	0.07	-
PPAF1820/A	EF2000-01	1/8"	750	1.0	1.5	15	0.19	B240
PPAF1420/A	EF2000-02	1/4"	750	1.0	1.5	15	0.19	B240
PPAF1430/A	EF3000-02	1/4"	1500	1.0	1.5	20	0.29	B340
PPAF3830/A	EF3000-03	3/8"	1500	1.0	1.5	20	0.29	B340
PPAF3840/A	EF4000-03	3/8"	4000	1.0	1.5	45	0.55	B440
PPAF1240/A	EF4000-04	1/2"	4000	1.0	1.5	45	0.55	B440
PPAF3440/A	EF4000-06	3/4"	6000	1.0	1.5	45	0.58	B540
PPAF3450/A	EF5000-06	3/4"	7000	1.0	1.5	130	0.58	B640
PPAF1050/A	EF5000-10	1"	7000	1.0	1.5	130	1.08	B640



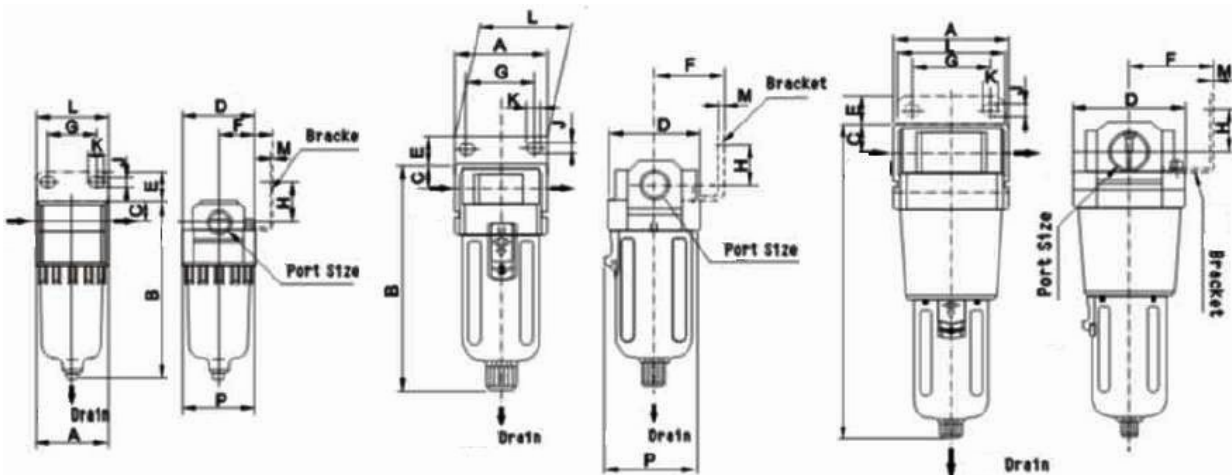
EF1000-EF2000



EF3000-EF4000



EF5000



EF1000-EF2000

EF3000-EF4000

EF5000

KOD TOWARU	TYP	GWINT BSP	A [mm]	B [mm]	C [mm]	D [mm]	E [mm]	F [mm]	G [mm]	H [mm]	J [mm]	K [mm]	L [mm]	M [mm]	P [mm]
PPAFM510/A	EF1000-M5	M5	25	66	7	25	-	-	-	-	-	-	-	-	26.5
PPAF1820/A	EF2000-01	1/8"	40	97.5	11	40	17	30	27	22	5.4	8.4	40	2.3	56
PPAF1420/A	EF2000-02	1/4"	40	97.5	11	40	17	30	27	22	5.4	8.4	40	2.3	56
PPAF1430/A	EF3000-02	1/4"	53	132.5	14	53	16	41	40	23	6.5	8	53	2.3	56
PPAF3830/A	EF3000-03	3/8"	53	132.5	14	53	16	41	40	23	6.5	8	53	2.3	56
PPAF3840/A	EF4000-03	3/8"	70	168.5	18	70	17	50	54	26	8.5	10.5	70	2.3	73
PPAF1240/A	EF4000-04	1/2"	70	168.5	18	70	17	50	54	26	8.5	10.5	70	2.3	73
PPAF3440/A	EF4000-06	3/4"	75	172.5	20	70	14	50	54	25	8.5	10.5	70	2.3	73
PPAF3450/A	EF5000-06	3/4"	90	247.5	24	90	23	66.5	66	35	11	13	90	3.2	90
PPAF1050/A	EF5000-10	1"	90	247.5	24	90	23	66.5	66	35	11	13	90	3.2	90

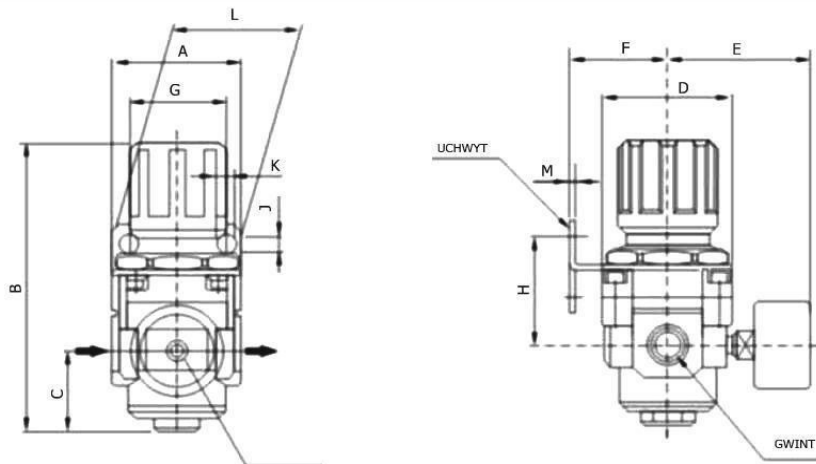
REDUKTOR SPRĘŻONEGO POWIETRZA
R

Medium: powietrze
 Temperatura pracy: od +5°C do + 60°C
 Materiał korpusu: aluminium

KOD TOWARU	TYP	GWINT	PRZEPLYW [L/min]	CIŚNIENIE PRACY [MPa]	CIŚNIENIE MAX. [MPa]	WAGA [kg]	TYP UCHWYTU REGULATORA
PPARM510/A	ER1000-M5	M5	100	1.0	1.5	0.08	B120
PPAR1820/A	ER2000-01	1/8"	550	1.0	1.5	0.27	B220
PPAR1420/A	ER2000-02	1/4"	550	1.0	1.5	0.27	B220
PPAR1430/A	ER3000-02	1/4"	2500	1.0	1.5	0.41	B320
PPAR3830/A	ER3000-03	3/8"	2500	1.0	1.5	0.41	B320
PPAR3840/A	ER4000-03	3/8"	6000	1.0	1.5	0.84	B420
PPAR1240/A	ER4000-04	1/2"	6000	1.0	1.5	0.84	B420
PPAR3440/A	ER4000-06	3/4"	6000	1.0	1.5	0.84	B420
PPAR3450/A	ER5000-06	3/4"	8000	1.0	1.5	0.94	B420
PPAR1050/A	ER5000-10	1"	8000	1.0	1.5	1.19	B420



ER1000-ER5000



ER1000-ER5000

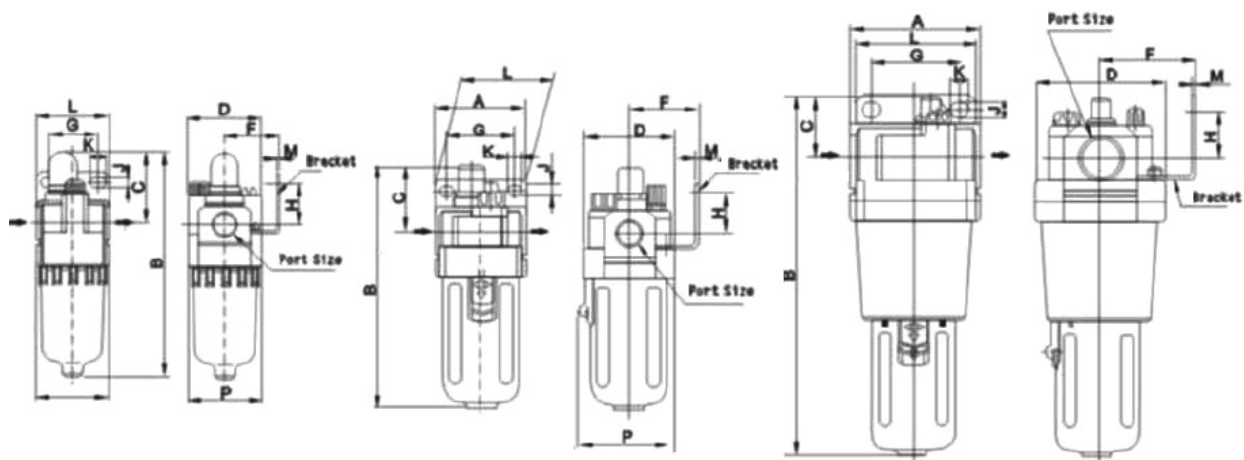
KOD TOWARU	TYP	GWINT	A [mm]	B [mm]	C [mm]	D [mm]	E [mm]	F [mm]	G [mm]	H [mm]	J [mm]	K [mm]	L [mm]	M [mm]	N [mm]
PPARM510/A	ER1000-M5	M5	25	61.5	11	25	26	25	28	30	4.5	6.5	40	2	20.5
PPAR1820/A	ER2000-01	1/8"	40	95	17	40	56.8	30	34	44	5.4	15.4	55	2.3	33.5
PPAR1420/A	ER2000-02	1/4"	40	95	17	40	56.8	30	34	44	5.4	15.4	55	2.3	33.5
PPAR1430/A	ER3000-02	1/4"	53	127.5	35	53	60.8	39	40	46	6.5	8	53	2.3	42.5
PPAR3830/A	ER3000-03	3/8"	53	127.5	35	53	60.8	39	40	46	6.5	8	53	2.3	42.5
PPAR3840/A	ER4000-03	3/8"	70	149.5	37.5	70	65.5	49.2	54	54	8.5	10.5	70	2.3	52.5
PPAR1240/A	ER4000-04	1/2"	70	149.5	37.5	70	65.5	49.2	54	54	8.5	10.5	70	2.3	52.5
PPAR3440/A	ER4000-06	3/4"	75	154	40.5	70	69.5	49.2	54	55.5	8.5	10.5	70	2.3	52.5
PPAR3450/A	ER5000-06	3/4"	90	168	48	90	75.5	49.2	54	62	8.5	10.5	70	2.3	52.5
PPAR1050/A	ER5000-10	1"	90	168	48	90	75.5	49.2	54	62	8.5	10.5	70	2.3	52.5

NAOLEJACZ SPRĘŻONEGO POWIETRZA

L

Medium: powietrze
 Temperatura pracy: od +5°C do +60°C
 Materiał korpusu: aluminium
 Pozycja pracy: pionowa

KOD TOWARU	TYP	GWINT BSP	PRZEPŁYW [L/min]	CIŚNIENIE PRACY [MPa]	CIŚNIENIE MAX. [MPa]	POJEMNOŚĆ ZBIORNIKA [ml]	WAGA [kg]	TYP UCHWYTU
								L
PPALM510/A	EL1000-M5	M5	95	1.0	1.5	7	0.07	-
PPAL1820/A	EL2000-01	1/8"	800	1.0	1.5	25	0.22	B240
PPAL1420/A	EL2000-02	1/4"	800	1.0	1.5	25	0.22	B240
PPAL1430/A	EL3000-02	1/4"	1700	1.0	1.5	50	0.30	B340
PPAL3830/A	EL3000-03	3/8"	1700	1.0	1.5	50	0.30	B340
PPAL3840/A	EL4000-03	3/8"	5000	1.0	1.5	130	0.56	B440
PPAL1240/A	EL4000-04	1/2"	5000	1.0	1.5	130	0.56	B440
PPAL3440/A	EL4000-06	3/4"	6300	1.0	1.5	130	0.58	B540
PPAL3450/A	EL5000-06	3/4"	7000	1.0	1.5	130	1.08	B640
PPAL1050/A	EL5000-10	1"	7000	1.0	1.5	130	1.08	B640



EL1000-EL2000

EL3000-EL4000

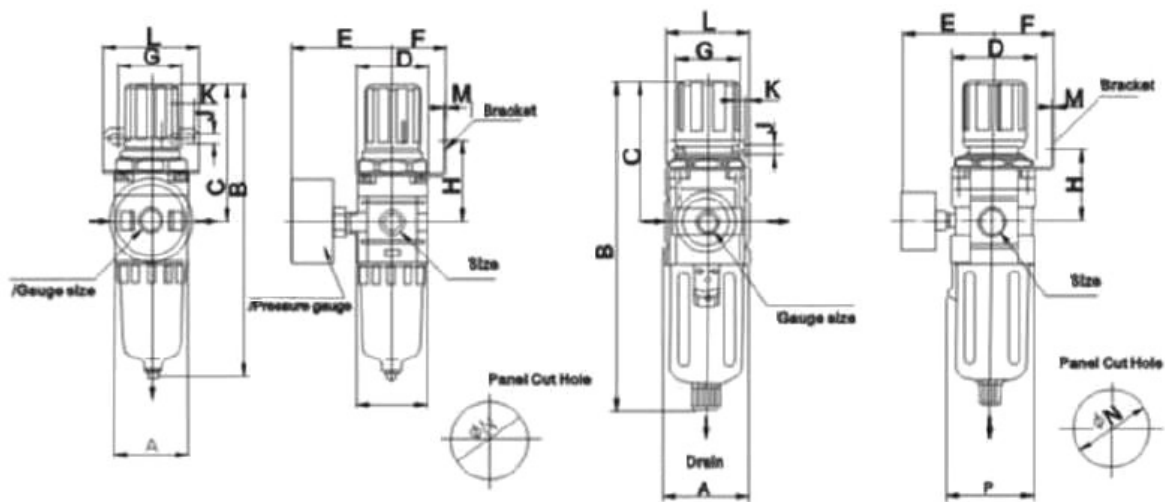
EL5000

KOD TOWARU	TYP	GWINT BSP	A [mm]	B [mm]	C [mm]	D [mm]	F [mm]	G [mm]	H [mm]	J [mm]	K [mm]	L [mm]	M [mm]	P [mm]
PPALM510/A	EL1000-M5	M5	25	81.5	25.5	25	-	-	-	-	-	-	-	27
PPAL1820/A	EL2000-01	1/8"	40	122	38	40	30	27	22	5.4	8.4	40	2.3	40
PPAL1420/A	EL2000-02	1/4"	40	122	38	40	30	27	22	5.4	8.4	40	2.3	40
PPAL1430/A	EL3000-02	1/4"	53	142	38	53	41	40	23	6.5	8	53	2.3	56
PPAL3830/A	EL3000-03	3/8"	53	142	38	53	41	40	23	6.5	8	53	2.3	56
PPAL3840/A	EL4000-03	3/8"	70	177	41	70	50	54	26	8.5	10.5	70	2.3	73
PPAL1240/A	EL4000-04	1/2"	70	177	41	70	50	54	26	8.5	10.5	70	2.3	73
PPAL3440/A	EL4000-06	3/4"	75	177	39	70	50	54	25	8.5	10.5	70	2.3	73
PPAL3450/A	EL5000-06	3/4"	90	254	45	90	66.5	66	35	11	13	90	3.2	90
PPAL1050/A	EL5000-10	1"	90	254	45	90	66.5	66	35	11	13	90	3.2	90

FILTROREDUKTOR SPRĘŻONEGO POWIETRZA FR

Medium: powietrze
Temperatura pracy: od +5°C do + 60°C
Wkładka filtra: 25µm /opcjonalnie 5 µm/
Materiał korpusu: aluminium
Pozycja pracy: pionowa
Spust kondensatu: ręczny typ EW1000-EW2000
 półautomatyczny typ EW3000-EW5000

TOWARU	TYP	GWINT BSP	PRZEPIYŁYW [L/min]	CIŚNIENIE PRACY [MPa]	CIŚNIENIE MAX. [MPa]	POJEMNOŚĆ ZBIORNIKA [ml]	WAGA [kg]	TYP
								UCHWYTU F.R
PPAWM510/A	EW1000-M5	M5	110	1.0	1.5	4	0.09	B120
PPAW1820/A	EW2000-01	1/8"	750	1.0	1.5	15	0.36	B220
PPAW1420/A	EW2000-02	1/4"	750	1.0	1.5	15	0.36	B220
PPAW1430/A	EW3000-02	1/4"	1500	1.0	1.5	20	0.56	B320
PPAW3830/A	EW3000-03	3/8"	1500	1.0	1.5	20	0.56	B320
PPAW3840/A	EW4000-03	3/8"	4000	1.0	1.5	45	1.15	B420
PPAW1240/A	EW4000-04	1/2"	4000	1.0	1.5	45	1.15	B420
PPAW3440/A	EW4000-06	3/4"	6000	1.0	1.5	45	1.21	B420
PPAW3450/A	EW5000-06	3/4"	7000	1.0	1.5	130	1.70	B420
PPAW1050/A	EW5000-10	1"	7000	1.0	1.5	130	1.70	B420



EW1000-EW2000

EW3000-EW4000

EW5000

KOD TOWARU	TYP	GWINT BSP	A [mm]	B [mm]	C [mm]	D [mm]	E [mm]	F [mm]	G [mm]	H [mm]	J [mm]	K [mm]	L [mm]	M [mm]	N [mm]	P [mm]
PPAWM510/	EW1000-M5	M5	25	109.5	50.5	25	26	25	28	30	4.5	6.5	40	2	20.5	28
PPAW1820/A	EW2000-01	1/8"	40	164.5	78	40	56.8	30	34	43.5	5.4	15.4	55	2.3	33.5	40
PPAW1420/A	EW2000-02	1/4"	40	164.5	78	40	56.8	30	34	43.5	5.4	15.4	55	2.3	33.5	40
PPAW1430/A	EW3000-02	1/4"	53	211	92.5	53	60.8	39	40	46	6.5	8	53	2.3	33.5	40
PPAW3830/A	EW3000-03	3/8"	53	211	92.5	53	60.8	39	40	46	6.5	8	53	2.3	33.5	40
PPAW3840/A	EW4000-03	3/8"	70	262	112	70	70.5	49.2	54	53.5	8.5	10.5	70	2.3	52.5	73
PPAW1240/A	EW4000-04	1/2"	70	262	112	70	70.5	49.2	54	53.5	8.5	10.5	70	2.3	52.5	73
PPAW3440/A	EW4000-06	3/4"	75	267	114	70	70.5	49.2	54	55.6	8.5	10.5	70	2.3	52.5	73
PPAW3450/A	EW5000-06	3/4"	90	338	116	90	75.5	49.2	54	62	8.5	10.5	70	2.3	52.5	90
PPAW1050/A	EW5000-10	1"	90	338	116	90	75.5	49.2	54	62	8.5	10.5	70	2.3	52.5	90

FILTROREDUKTOR Z NAOLEJACZEM
FR+L

Medium: powietrze
 Ciśnienie pracy: 1.0 Mpa
 Ciśnienie max. pracy: 1.5Mpa
 Temperatura pracy: od +5°C do + 60°C
 Wkładka filtra: 25µm /opcjonalnie 5 µm/
 Materiał korpusu: aluminium
 Pozycja pracy: pionowa
 Spust kondensatu: ręczny typ EC1010-EC2010
 półautomatyczny typ EC3010-EC5010

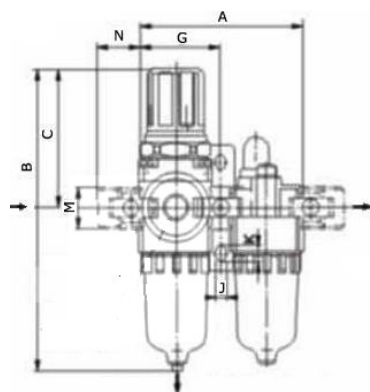
KOD TOWARU	TYP	GWINT BSPP	PRZEPIŹYW [L/min]	ELEMENTY ZESPOŁU POWIETRZA		WAGA [kg]	TYP UCHWYTU
				FILTR Z REDUKTOREM	NAOLEJACZ		
PPACM511/A	EC1010-M5	M5	90	EW1000-M5	EL1000-M5	0.22	Y10T
PPAC1821/A	EC2010-01	1/8"	500	EW2000-01	EL2000-01	0.66	Y20T
PPAC1421/A	EC2010-02	1/4"	500	EW2000-02	EL2000-02	0.66	Y20T
PPAC1431/A	EC3010-02	1/4"	1700	EW3000-02	EL3000-02	0.98	Y30T
PPAC3831/A	EC3010-03	3/8"	1700	EW3000-03	EL3000-03	0.98	Y30T
PPAC3841/A	EC4010-03	3/8"	3000	EW4000-03	EL4000-03	1.93	Y40T
PPAC1241/A	EC4010-04	1/2"	3000	EW4000-04	EL4000-04	1.93	Y40T
PPAC3441/A	EC4010-06	3/4"	3000	EW4000-06	EL4000-06	1.99	Y50T
PPAC3451/A	EC5010-06	3/4"	4000	EW5000-06	EL5000-06	3.2	Y60T
PPAC1051/A	EC5010-10	1"	4000	EW5000-10	EL5000-10	3.2	Y60T



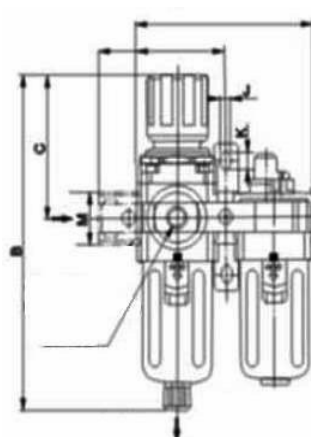
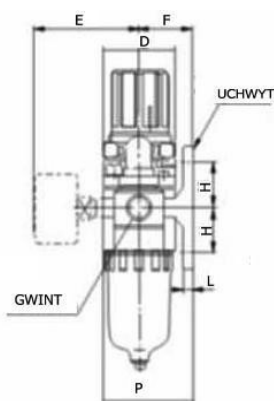
EC1010-EC2010



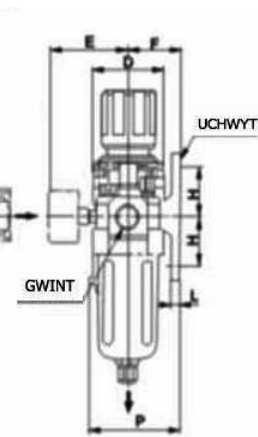
EC3010-EC5010



EC1010-AC2010



EC3010-AC5010



KOD TOWARU	TYP	GWINT BSPP	A [mm]	B [mm]	C [mm]	D [mm]	E [mm]	F [mm]	G [mm]	H [mm]	J [mm]	K [mm]	L [mm]	M [mm]	N [mm]	P [mm]
PPACM510/A	EC1010-M5	M5	58	109.5	50.5	25	26	25	29	20	4.5	7.5	5	17.5	16	38.5
PPAC1820/A	EC2010-01	1/8"	90	164.5	78	40	56.8	30	45	24	5.5	8.5	5	22	23	50
PPAC1420/A	EC2010-02	1/4"	90	164.5	78	40	56.8	30	45	24	5.5	8.5	5	22	23	50
PPAC1430/A	EC3010-02	1/4"	117	211	92.5	53	60.8	41	58.5	35	7	11	7	34.2	26	70.5
PPAC3830/A	EC3010-03	3/8"	117	211	92.5	53	60.8	41	58.5	35	7	11	7	34.2	26	70.5
PPAC3840/A	EC4010-03	3/8"	154	282	112	70	70.5	50	77	40	9	13	7	42.2	33	88
PPAC1240/A	EC4010-04	1/2"	154	282	112	70	70.5	50	77	40	9	13	7	42.2	33	88
PPAC3440/A	EC4010-06	3/4"	164	267	114	70	70.5	50	82	40	9	13	7	46.2	36	88
PPAC3450/A	EC5010-06	3/4"	195	338	116	90	75.5	69.8	97.5	50	12	16	10.5	55.2	40	115
PPAC1050/A	EC5010-10	1"	195	338	116	90	75.5	69.8	97.5	50	12	16	10.5	55.2	40	115

FILTR, REDUKTOR, NAOLEJACZ
F+R+L

Medium: powietrze
 Ciśnienie pracy: 1.0 Mpa
 Ciśnienie max. pracy: 1.5Mpa
 Temperatura pracy: od +5°C do + 60°C
 Wkładka filtra: 25µm /opcjonalnie 5 µm/
 Materiał korpusu: aluminium
 Pozycja pracy: pionowa
 Spust kondensatu: ręczny typ EC1000-EC2000
 półautomatyczny typ EC3000-EC5000

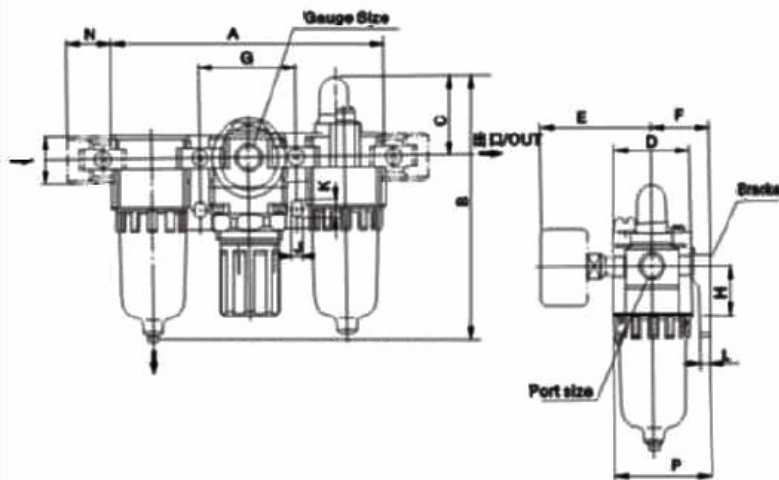


EC1000-EC2000

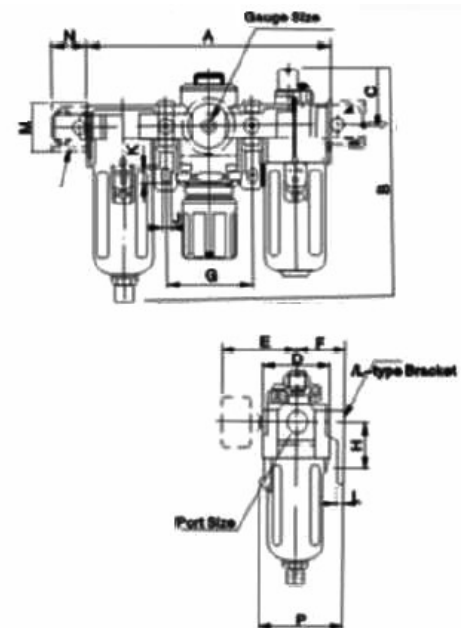


EC3000-EC5000

KOD TOWARU	TYP	GWINT BSPP	PRZEPŁYW [L/min]	ELEMENTY ZESPOŁU POWIETRZA			WAGA [kg]	TYP UCHWYTU
				FILTR	REDUKTOR	NAOLEJACZ		
PPACM510/A	EC1000-M5	M5	90	EF1000-M5	ER1000-M5	EL1000-M5	0.26	Y10T
PPAC1820/A	EC2000-01	1/8"	500	EF2000-01	ER2000-01	EL2000-01	0.74	Y20T
PPAC1420/A	EC2000-02	1/4"	500	EF2000-02	ER2000-02	EL2000-02	0.74	Y20T
PPAC1430/A	EC3000-02	1/4"	2000	EF3000-02	ER3000-02	EL3000-02	1.18	Y30T
PPAC3830/A	EC3000-03	3/8"	2000	EF3000-03	ER3000-03	EL3000-03	1.18	Y30T
PPAC3840/A	EC4000-03	3/8"	4000	EF4000-03	ER4000-03	EL4000-03	2.14	Y40T
PPAC1240/A	EC4000-04	1/2"	4000	EF4000-04	ER4000-04	EL4000-04	2.14	Y40T
PPAC3440/A	EC4000-06	3/4"	4500	EF4000-06	ER4000-06	EL4000-06	2.47	Y50T
PPAC3450/A	EC5000-06	3/4"	5000	EF5000-06	ER5000-06	EL5000-06	3.82	Y60T
PPAC1050/A	EC5000-10	1"	5000	EF5000-10	ER5000-10	EL5000-10	3.82	Y60T



EC1000-EC2000



EC3000-EC5000

KOD TOWARU	TYP	GWINT BSPP	A [mm]	B [mm]	C [mm]	D [mm]	E [mm]	F [mm]	G [mm]	H [mm]	J [mm]	K [mm]	L [mm]	M [mm]	N [mm]	P [mm]
PPALM510/A	EC1000-M5	M5	91	84.5	25.5	25	26	25	33	20	4.5	7.5	5	17.5	16	38.5
PPAL1820/A	EC2000-01	1/8"	140	125	38	40	56.8	30	50	24	5.5	8.5	5	22	23	50
PPAL1420/A	EC2000-02	1/4"	140	125	38	40	56.8	30	50	24	5.5	8.5	5	22	23	50
PPAL1430/A	EC3000-02	1/4"	181	156.5	38	53	60.8	41	64	35	7	11	7	34.2	26	70.5
PPAL3830/A	EC3000-03	3/8"	181	156.5	38	53	60.8	41	64	35	7	11	7	34.2	26	70.5
PPAL3840/A	EC4000-03	3/8"	238	191.5	41	70	65.5	50	84	40	9	13	7	42.2	33	88
PPAL1240/A	EC4000-04	1/2"	238	191.5	41	70	65.5	50	84	40	9	13	7	42.2	33	88
PPAL3440/A	EC4000-06	3/4"	253	193	40.5	70	69.5	50	89	40	9	13	7	46.2	36	88
PPAL3450/A	EC5000-06	3/4"	300	271.5	48	90	75.5	69.8	105	50	12	16	10.5	55.2	40	115
PPAL1050/A	EC5000-10	1"	300	271.5	48	90	75.5	69.8	105	50	12	16	10.5	55.2	40	115