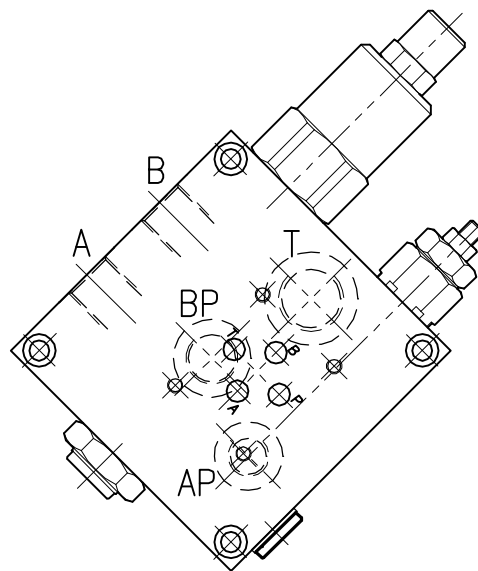
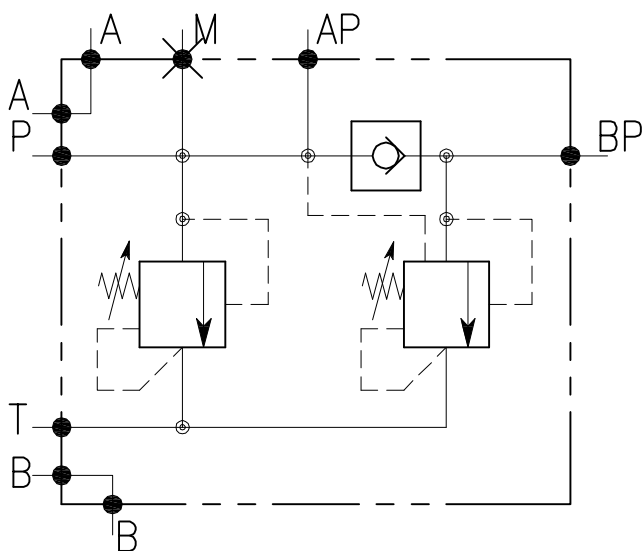


VD-CTP-03

VALVOLA DI MESSA A SCARICO PER POMPA DOPPIA CON CONTROLLO DELLA PRESSIONE, MONTAGGIO CETOP
 PUMP UNLOADING VALVE WITH ADDITIONAL REFIL



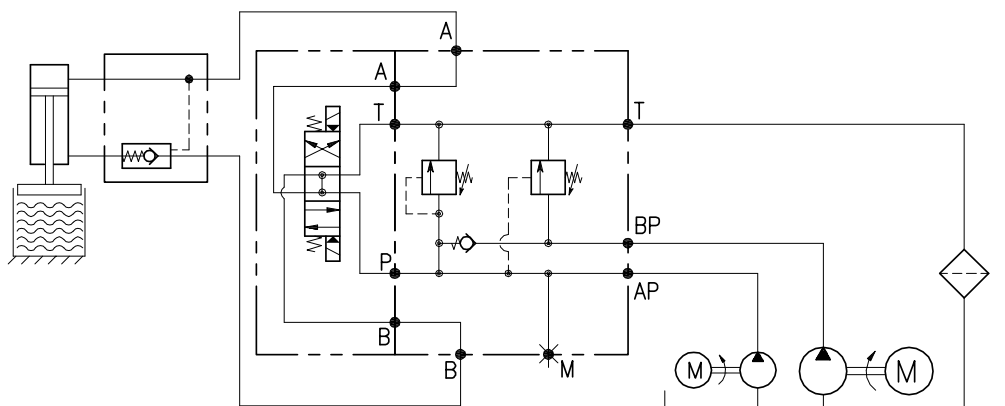
CARATTERISTICHE

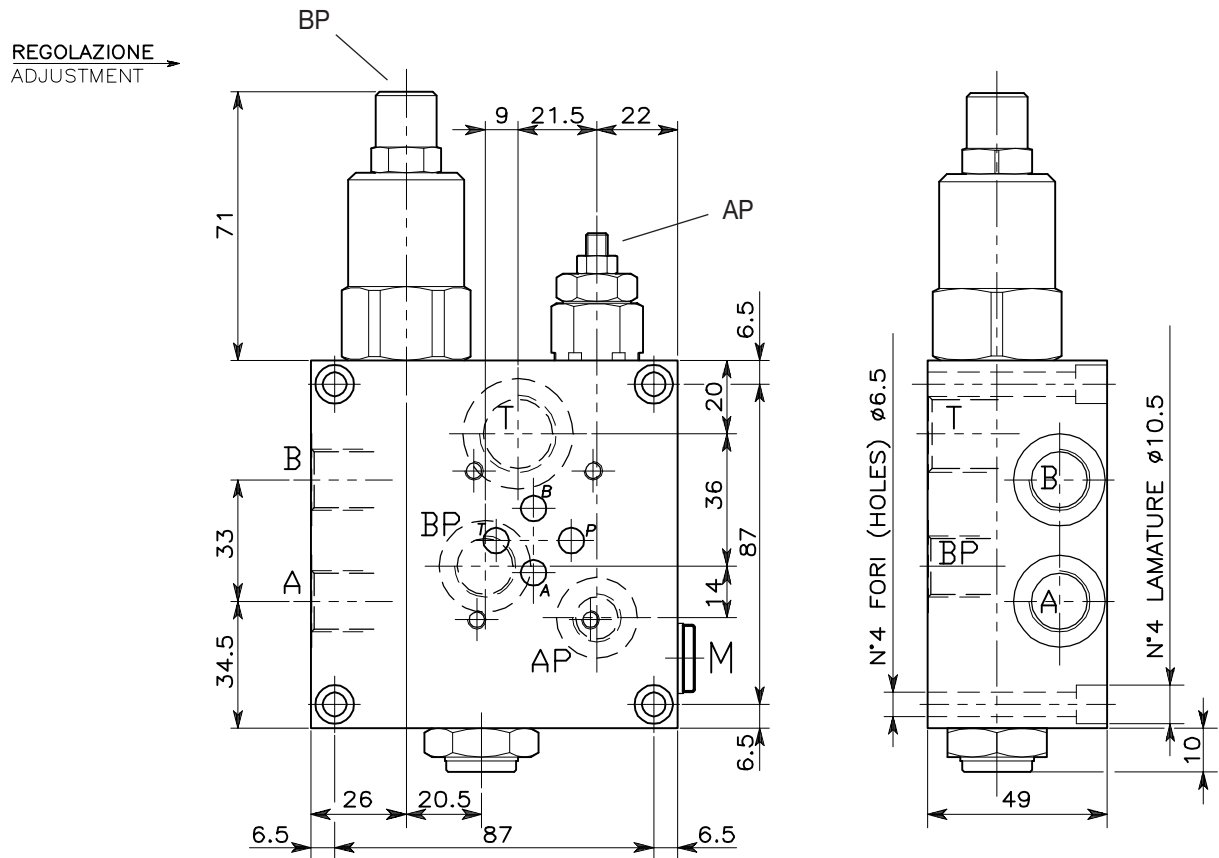
Luce nominale	DN 10
Portata max	60 l/min - 15 GPM
Pressione di lavoro max.	350 bar - 5075 PSI
Pressione max. di taratura	350 bar - 5075 PSI
Temperatura ambiente	-30°C + 50°C
Temperatura olio	-30°C + 80°C
Filtraggio consigliato	30÷50 micron
Peso	

PERFORMANCE

Rated size
Max flow-rate
Max working pressure
Max setting pressure
Room temperature
Oil temperature
Recommended filtration
Weight

ESEMPIO TIPICO DI CIRCUITO TYPICAL CIRCUIT EXAMPLE





**DIMENSIONI
DIMENSIONS**

Campo taratura Setting range			Attacchi Port size T GAS (BSPP)	Attacchi Port size A-B-BP GAS (BSPP)	Attacchi Port size AP-M GAS (BSPP)	Luce nominale Rated size DN	Portata max Max flow-rate l/min - GPM
677	676	675	1/2"	3/8"	1/4"	10	60-15

**CODICE DI ORDINAZIONE
HOW TO ORDER**

002 677 0 X 0

Campo taratura / Setting range			
(AP) 677	(AP) 676	(AP) 675	(BP) 675
Campo taratura 20÷350 bar (molla colore giallo) Setting range 20÷350 bar (yellow spring)	Campo taratura 10÷210 bar (molla colore giallo) Setting range 10÷210 bar (yellow spring)	Campo taratura 5÷100 bar (molla colore giallo) Setting range 5÷100 bar (yellow spring)	Campo taratura 10÷90 bar (molla colore giallo) Setting range 10÷90 bar (yellow spring)
Taratura standard (Q=5 l/1') Std. bar setting (Q=5 l/1') 280 bar	Taratura standard (Q=5 l/1') Std. bar setting (Q=5 l/1') 140 bar	Taratura standard (Q=5 l/1') Std. bar setting (Q=5 l/1') 70 bar	Taratura standard (Q=5 l/1') Std. bar setting (Q=5 l/1') 40 bar