

Ordering Code: **CO-10W-X-Y-Z**

25.4 Hex. (1 inch)

7.7

Locating Shoulder

7/8"-14UNF-2A

④

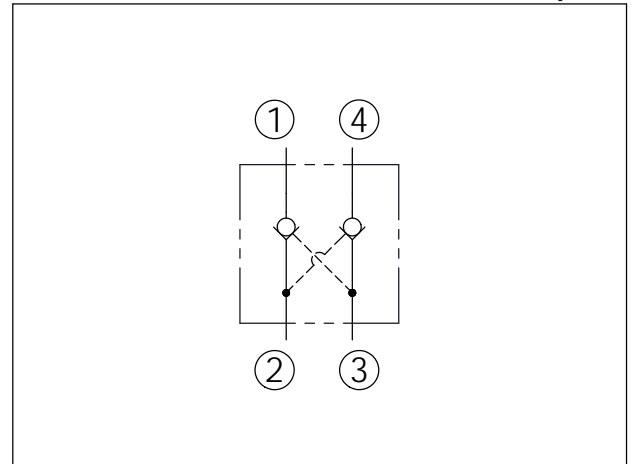
③

②

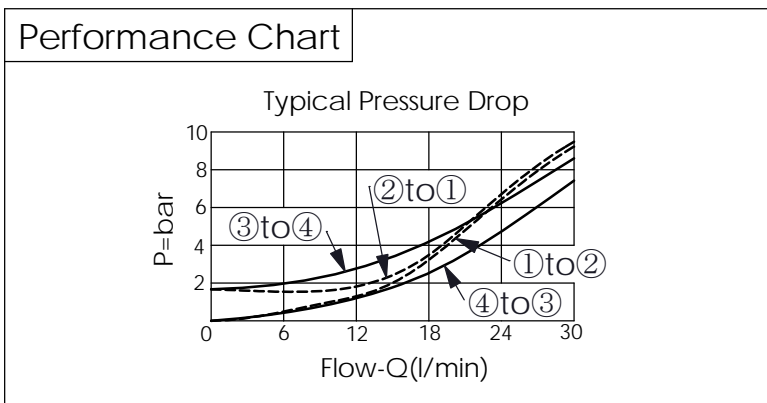
①

63.5

UNIT:mm



TECHNICAL DATA		
Max. pressure:	240	bar
Rated flow:	30	l/min
(Refer To Performance Chart)		
Cavity-Tooling:	10W-4	
Installation torque:	35-45	Nm
Weight:	0.11	kg
· Maximum Leakage (5 drops/min./70 bar) (46 cSt, 40°C)		



X	OPERATION	
43	Pilot Ratio 3:1	

Y	SPRINGS	
	Cracking pressure	
17	1.7 bar	

Z	OPTION	
N	Non-adjustable	