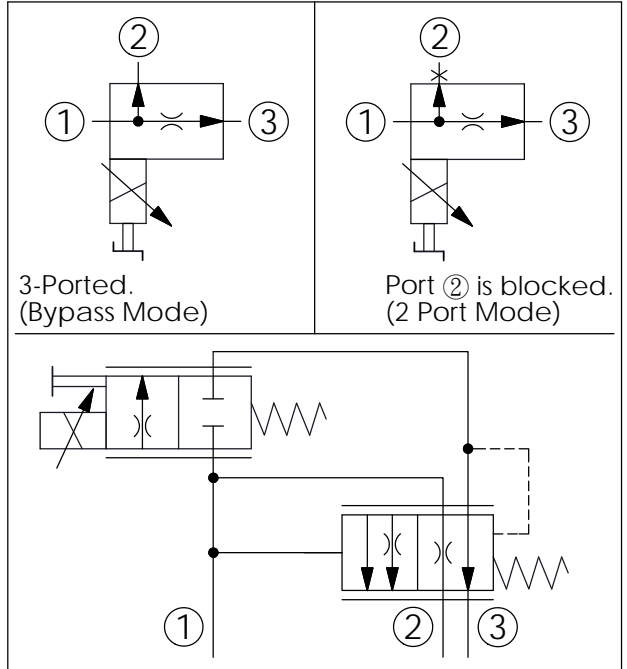
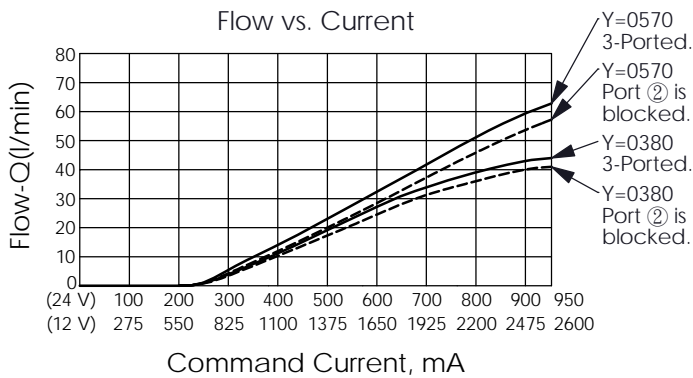
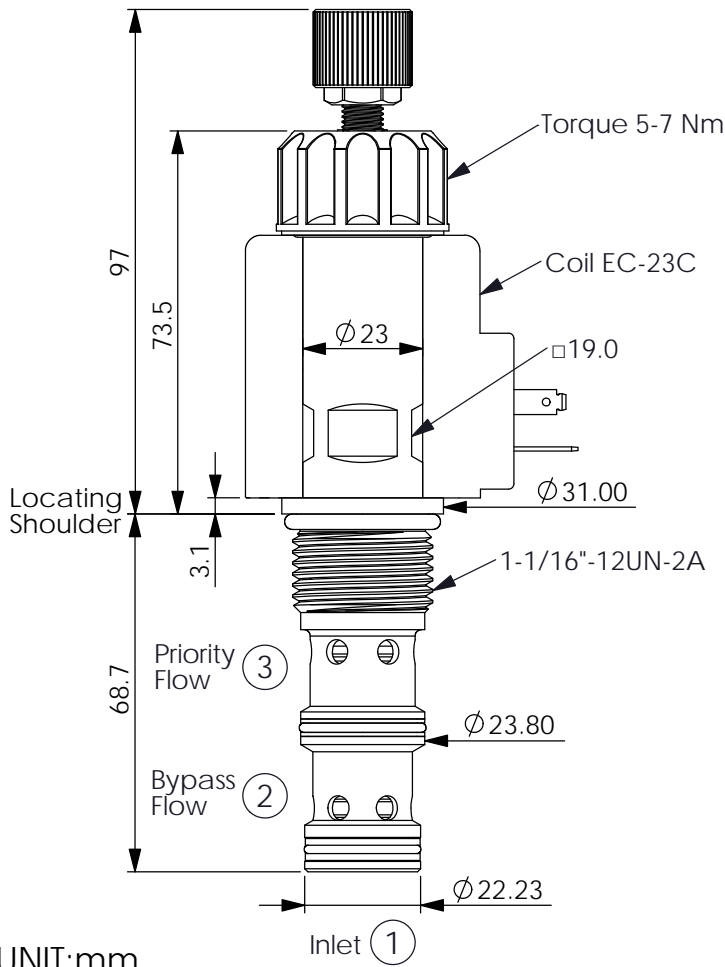


FLOW CONTROL VALVE

(Normally Closed, Electro-Proportional, Pressure compensated)

Ordering Code: **PFR-12W-X-Y-Z-1**



TECHNICAL DATA

Max. Operating pressure: 240 bar

Rated inlet flow: 114 l/min

Priority flow: 57 l/min

Cavity-Tooling: 12W-3

Installation torque: 54-66 Nm

Weight:(with Coil) 0.74 kg
(without Coil) 0.39 kg

X OPERATION

3G 3 Ports - 17 Watt. Coil
 $\phi 23$ mm tube

NOTE:Coil must be ordered separately. Use 12V DC or 24V DC (Series EC-23C) coils only.

Y PRIORITY FLOW (PORT 3)

0380 0-38 LPM

0570 0-57 LPM

Z OPTIONS

M Manual Override (Standard)

