



SM 38 SE



DIE SET OPTIONS

| | Range (mm) | Length |
|---------------|------------|--------|
| 38-06 | 6-16 | 45 |
| 38-08 | 8-18 | 45 |
| 38-11 | 11-21 | 45 |
| 38-14 | 14-24 | 45 |
| 38-17 | 17-27 | 45 |
| 38-20 | 20-30 | 55 |
| 38-23 | 23-33 | 55 |
| 38-26 | 26-36 | 55 |
| 38-30 | 30-40 | 75 |
| 38-34 | 34-44 | 75 |
| 38-39 | 39-49 | 85 |
| 38-45 | 45-55 | 85 |
| 38-51* | 51-61 | 85 |

TECHNICAL SPECIFICATIONS

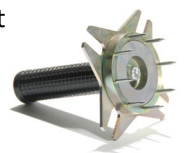
| | |
|--|------------------------|
| Max hose size | 1 1/2" 2SN, 1 1/4" 4SH |
| Crimping force (kN): | 1650 |
| Max crimping Ø (mm): | 61 |
| Max opening (mm): | die diameter + 32 |
| Standard motor: | 2.2 kW 400V 3-Ph |
| Control | Digital |
| Master dies opening / Length(mm): | 107/105 |
| Crimping range (mm): | 6 – 61 |
| Weight (kg) | 157 (without oil) |
| Dimensions (LxWxH mm) | 645 x 470 x 600 |
| Quick Change-set | Optional |
| Stand for machine | Optional |

*Max. ferrule diameter before crimping 61 mm

ACCESSORIES



Quick Change Set
including storage
rack and tool



Solid stand with ability to mount
Quick Change Set and machine



Foot pedal