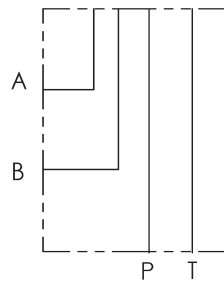
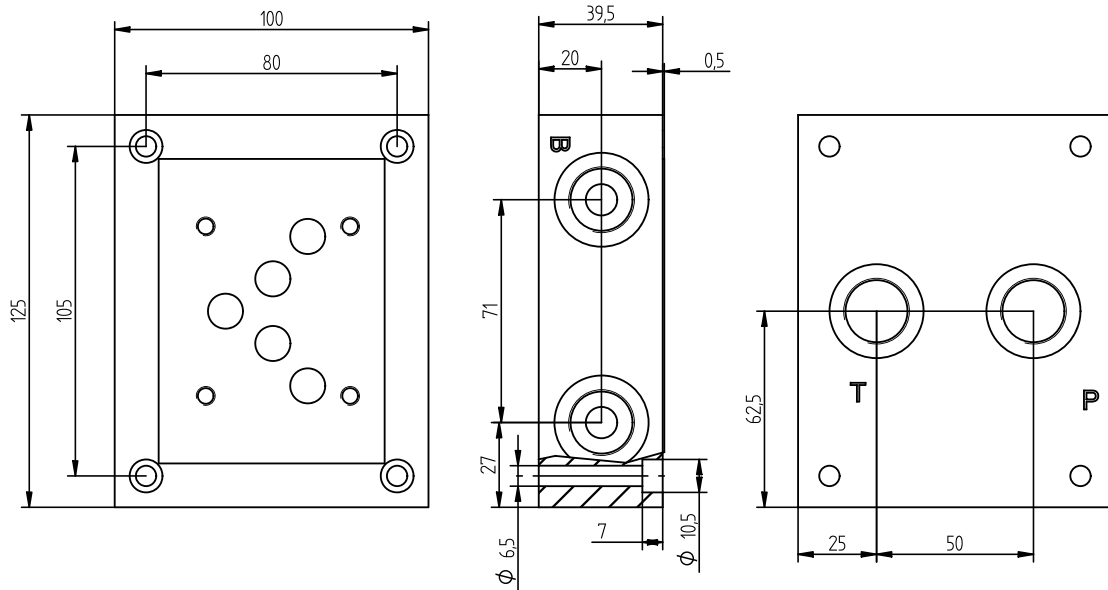




# BLOKI PRZYŁĄCZENIOWE CETOP NG10

BASE CON COLLEGAMENTO  
P - T POSTERIORI e A - B LATERALI  
SINGLE SUBPLATE  
ON REAR P - T and ON SIDE A - B  
**CETOP 5 - NG 10**



Versione standard in alluminio  
Standard type with aluminium

Pressione massima di lavoro = 300 bar  
Max working pressure = 300 bar

**Esempio codice di ordinazione - Ordering example**

**BSA 10 # PL**

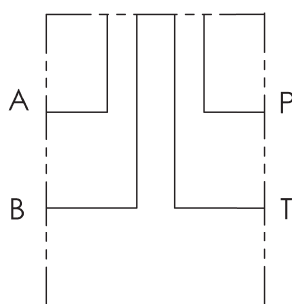
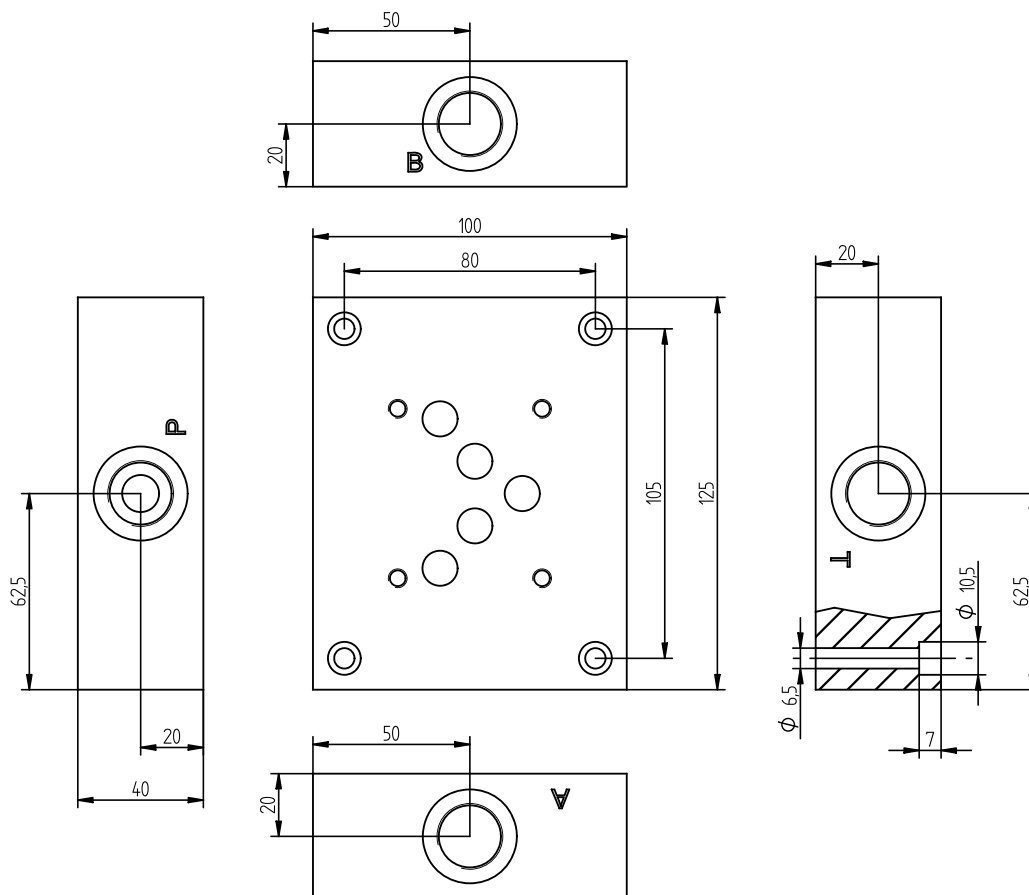
Monoblocco alluminio  
Aluminium monoblock

CETOP 5 - NG 10

C = (P - T - A - B) G1/2  
D = (P - T - A - B) G3/4

(P - T) posteriori e (A - B) laterali  
On rear (P - T) on side (A - B)

BASE CON COLLEGAMENTO  
P - T - A - B LATERALI A CROCE  
SINGLE SUBPLATE  
WITH RADIAL SIDE P - T - A - B PORTS  
**CETOP 5 - NG 10**



Versione standard in alluminio  
Standard type with aluminium

Pressione massima di lavoro = 300 bar  
Max working pressure = 300 bar

**Esempio codice di ordinazione - Ordering example**

**BSA 10 # L**

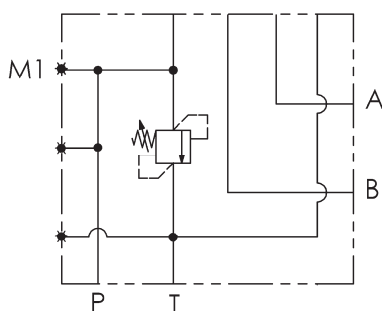
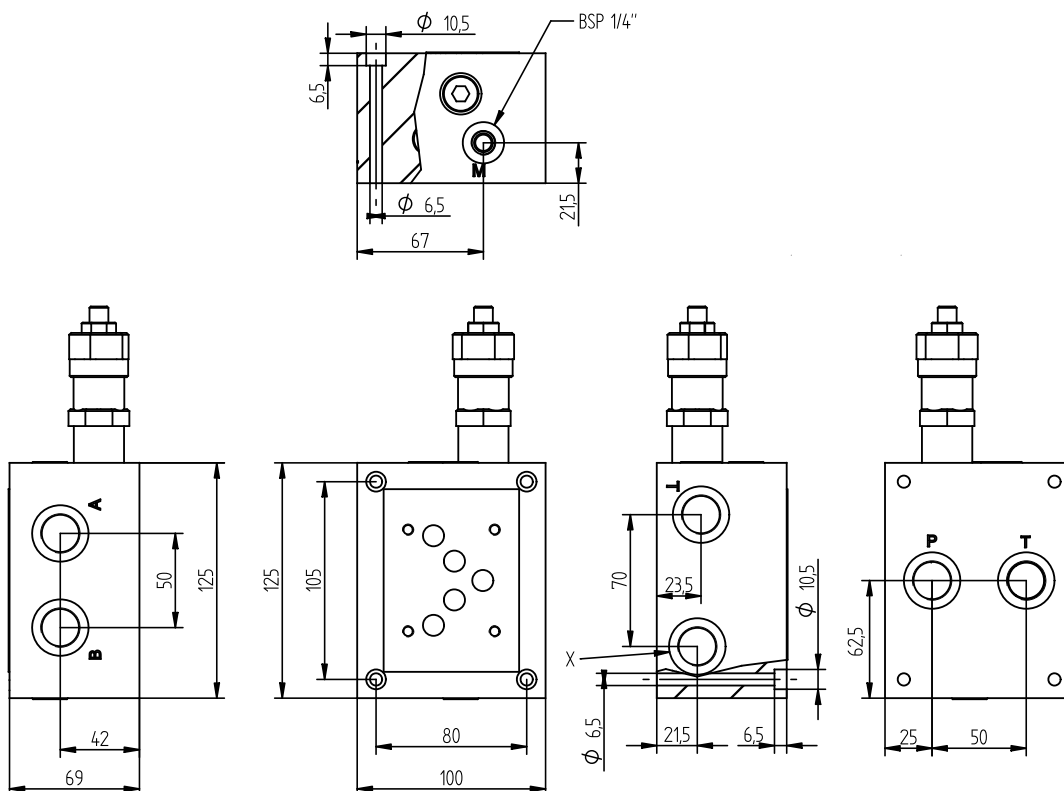
Monoblocco alluminio  
Aluminium monoblock

CETOP 5 - NG 10

C = (P - T - A - B) G1/2  
D = (P - T - A - B) G3/4

(P - T - A - B) laterali a croce  
Radial side (P - T - A - B) ports

BASE CON COLLEGAMENTO  
P - T POSTERIORI e A - B LATERALI  
SINGLE SUBPLATE  
ON REAR P - T and ON SIDE A - B  
**CETOP 5 - NG 10**



Versione standard in alluminio  
Standard type with aluminium

Pressione massima di lavoro = 300 bar  
Max working pressure = 300 bar

Caratteristiche valvola di massima  
vedere a pagina 25  
For further information regarding relief  
valve please see page 25

**Esempio codice di ordinazione - Ordering example**

**BSA 10 # PL # - #** ——— 10 = (35-100 bar)  
20 = (80-250 bar)

Base in alluminio  
Aluminium subplate

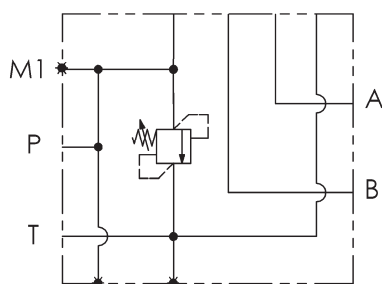
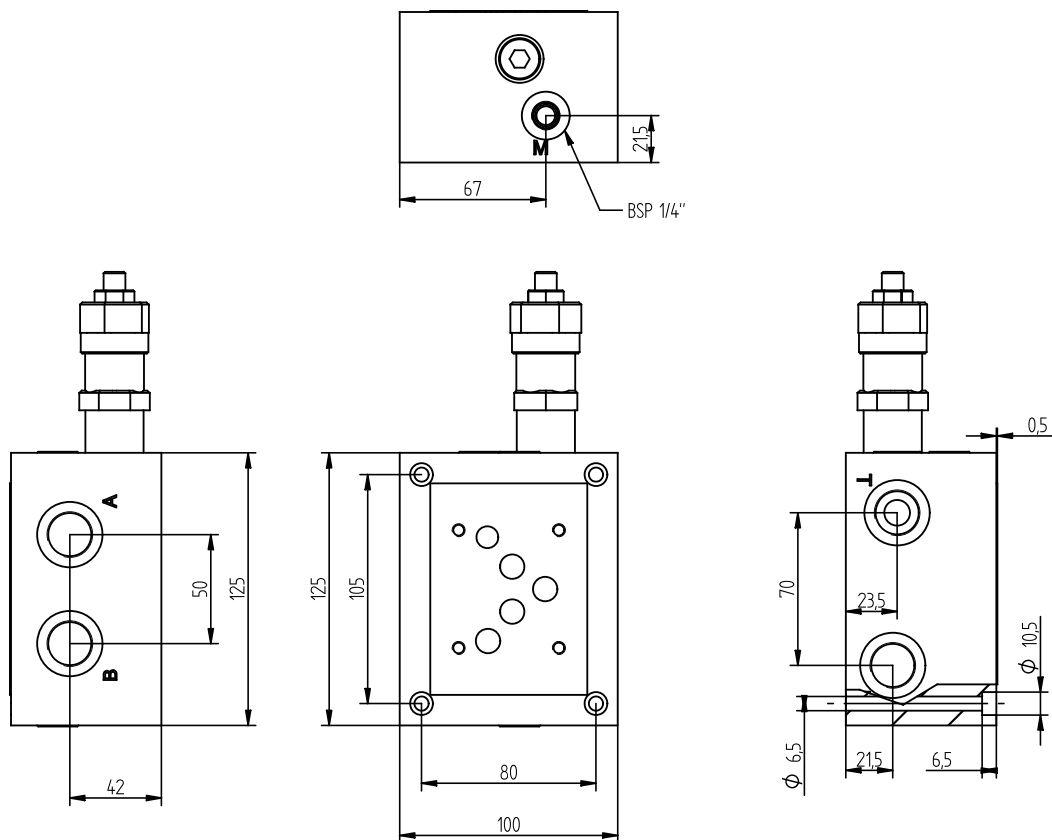
CETOP 5 - NG 10

C = (P - T - A - B) G1/2  
D = (P - T - A - B) G3/4

z = predisposta per valvole  
machined for relief valve  
x = con valvola di max  
with built-in relief valve

(P - T) posteriori e (A - B) laterali  
On rear (P - T) on side (A - B)

BASE CON COLLEGAMENTO  
P - T - A - B LATERALI  
SINGLE SUBPLATE  
ON SIDE P - T - A - B PORTS  
**CETOP 5 - NG 10**



Versione standard in alluminio  
Standard type with aluminium

Pressione massima di lavoro = 300 bar  
Max working pressure = 300 bar

Caratteristiche valvola di massima  
vedere a pagina 25  
For further information regarding relief  
valve please see page 25

**Esempio codice di ordinazione - Ordering example**

**BSA 10 # LL # - #** — 10 = (35-100 bar)  
20 = (80-250 bar)

Base in alluminio  
Aluminium subplate

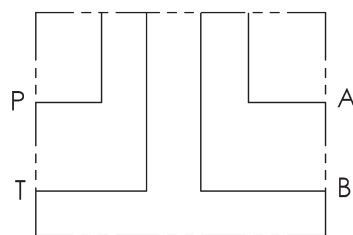
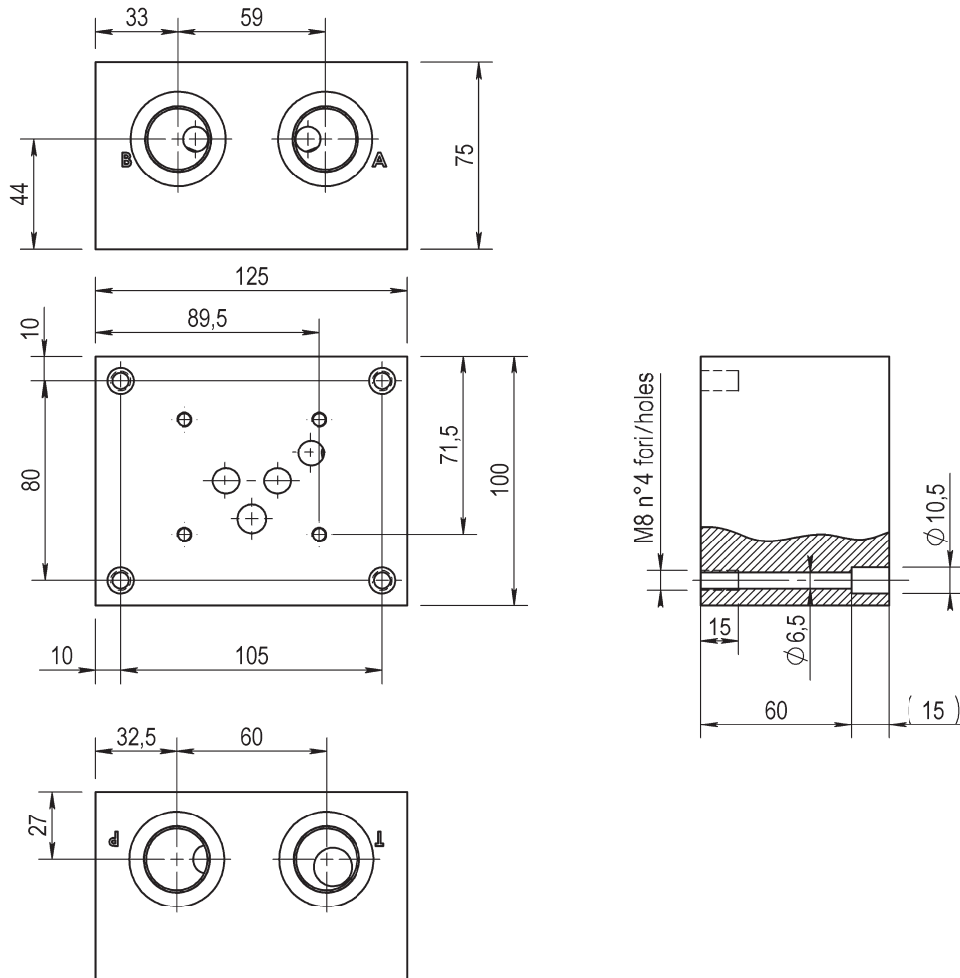
CETOP 5 - NG 10

C = (P - T - A - B) G1/2  
D = (P - T - A - B) G3/4

z = predisposta per valvole  
machined for relief valve  
x = con valvola di max  
with built-in relief valve

(P - T) posteriori e (A - B) laterali  
On rear (P - T) on side (A - B)

BASE CON COLLEGAMENTO  
P - T - A - B LATERALI LATO OPPOSTO  
SINGLE SUBPLATE  
WITH REAR ON OPPOSITE SIDE P - T - A - B PORTS  
**CETOP 5 - NG 10**



Versione standard in alluminio  
Standard type with aluminium

Pressione massima di lavoro = 300 bar  
Max working pressure = 300 bar

**Esempio codice di ordinazione - Ordering example**

**BSA 10 # LL**

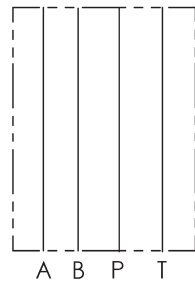
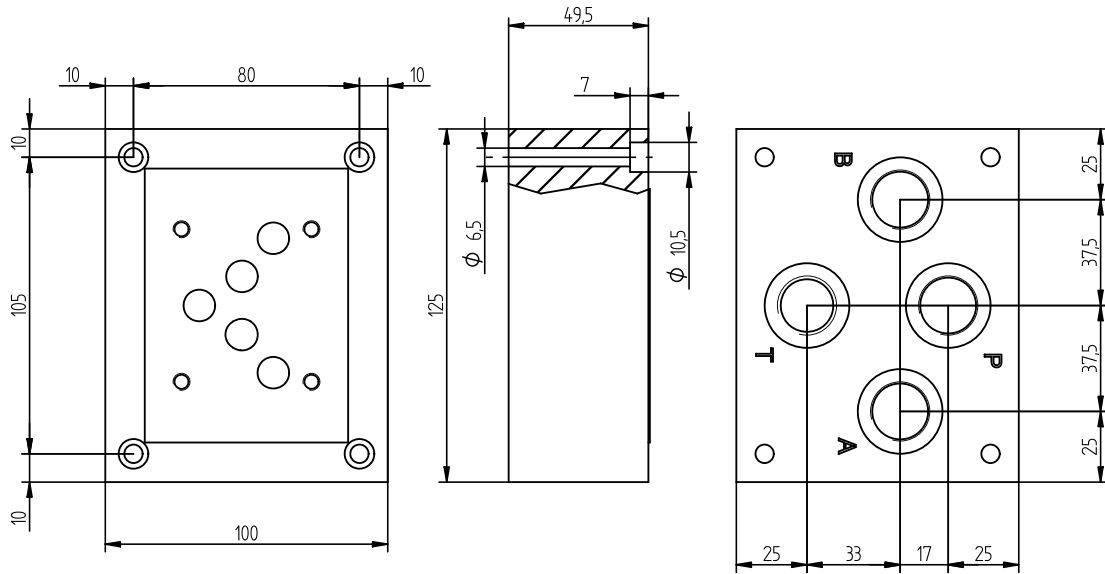
Base in alluminio  
Aluminium subplate

CETOP 5 - NG 10

C = (P - T - A - B) G1/2  
D = (P - T - A - B) G3/4

(P - T - A - B) laterali lato opposto  
On side (P - T - A - B) ports

BASE CON COLLEGAMENTO  
P - T - A - B POSTERIORE  
SINGLE SUBPLATE  
WITH ON REAR P - T - A - B PORTS  
**CETOP 5 - NG 10**



Versione standard in ghisa  
Standard type with cast iron

Pressione massima = 300 bar  
Max working pressure = 300 bar

**Esempio codice di ordinazione - Ordering example**

**BSG 10 D P-A**

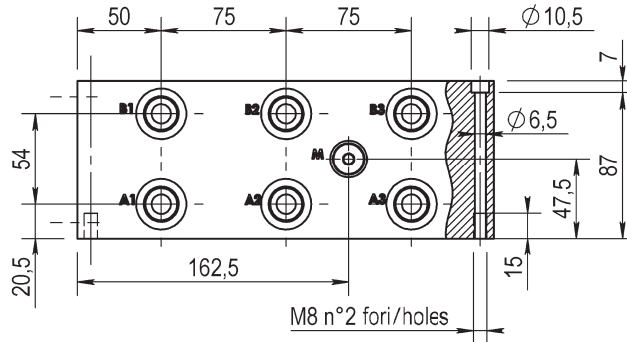
Base in acciaio  
Steel subplate

CETOP 5 - NG 10

(P - T - A - B) G3/4

(P - T - A - B) posteriori  
On rear (P - T - A - B) ports

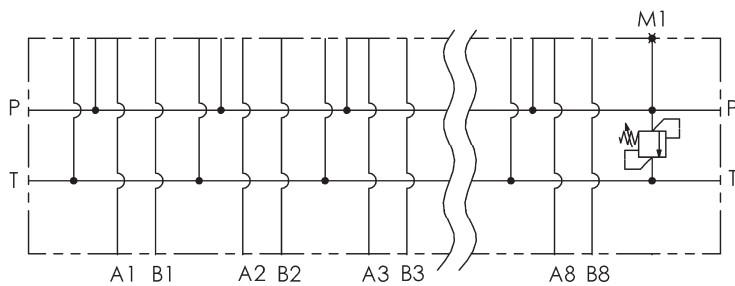
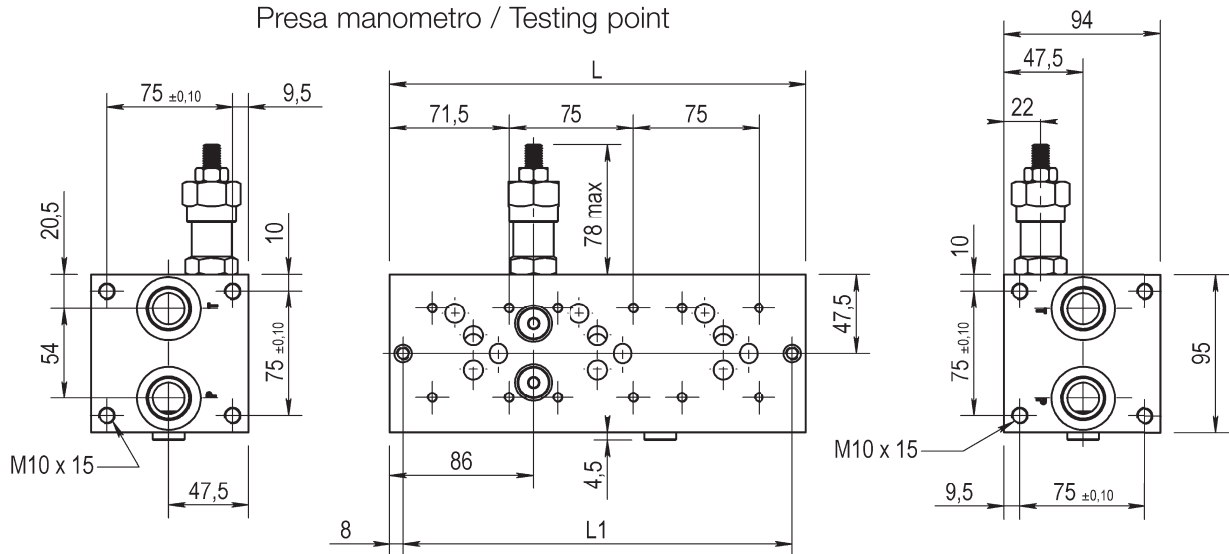
BLOCCO MULTIPLO ATTACCHI LATERALI  
COLLEGAMENTO PARALLELO  
MONOBLOCK WITH ON SIDE PORTS  
PARALLEL CONNECTION  
**CETOP 5 - NG 10**



Postaz. N° N° Stations	L1	L
1	84	100
2	159	175
3	234	250
4	309	325
5	384	400
6	459	475
7	534	550
8	609	625

M1 = G1/4

Preso manometro / Testing point



Versione standard in alluminio  
Standard type with aluminium

Pressione massima di lavoro = 300 bar  
Max working pressure = 300 bar

Caratteristiche valvola di massima  
vedere a pagina 25  
For further information regarding relief  
valve please see page 25

**Esempio codice di ordinazione - Ordering example**

**BMA 10 P 3 L # # - #** — 10 = (35-100 bar)  
20 = (80-250 bar)

Monoblocco alluminio  
Aluminium monoblock

CETOP 5 - NG 10

Collegamento in parallelo  
Parallel connection

Attacchi - Ports (P - T = G3/4 A - B = G1/2)

z = predisposta per valvole  
machined for relief valve  
x = con valvola di max  
with built-in relief valve

1 - 2 - 3 - 4 - 5 - 6 - 7 - 8  
Numero postazioni - Stations number

Configurazione con attacchi laterali  
On side ports



## **CENTRALA ELBLĄG**

Ul. Rawska 19B  
82-300 Elbląg

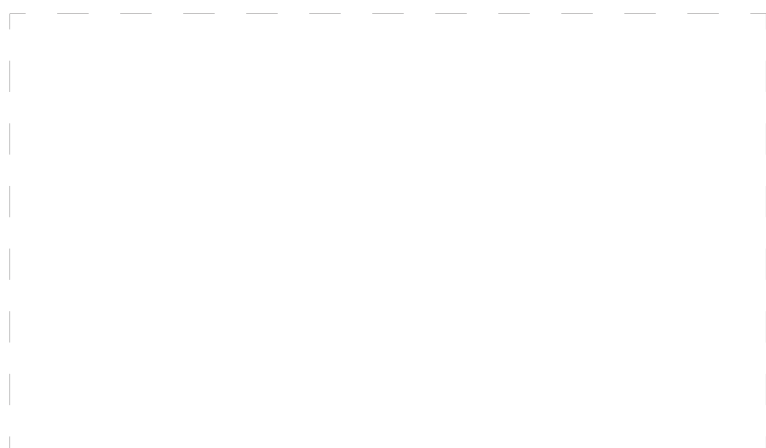
tel. /+48/ 55 625 51 00

fax /+48/ 55 625 51 01

### **Dział Handlowy**

tel. /+48/ 55 625 51 51

elblag@hydropress.pl



[www.hydropress.pl](http://www.hydropress.pl)

### **ODDZIAŁ GDAŃSK**

tel. /+48/ 55 625 51 21

fax /+48/ 55 625 51 22

### **ODDZIAŁ RUMIA**

tel. /+48/ 58 679 34 15

fax /+48/ 55 625 51 25

### **ODDZIAŁ TYCHY**

tel. /+48/ 32 787 52 88

fax /+48/ 55 625 51 38

### **ODDZIAŁ OLSZTYN**

tel. /+48/ 89 532 01 05

fax /+48/ 89 715 21 42

### **ODDZIAŁ WARSZAWA**

tel. /+48/ 22 468 86 97

fax /+48/ 55 625 51 32

### **BIURO WE WROCŁAWIU**

tel. /+48/ 782 838 000

fax /+48/ 55 625 51 35

### **BIURO W KIELCACH**

tel. /+48/ 885 995 501

fax /+48/ 55 625 51 01

### **BIURO W KRAKOWIE**

tel. /+48/ 885 995 019

fax /+48/ 55 625 51 01

### **BIURO W OPOLU**

tel. /+48/ 885 995 011

fax /+48/ 55 625 51 01

### **BIURO W BYDGOSZCZY**

tel. /+48/ 790 222 771

fax /+48/ 55 625 51 01

### **BIURO W BIAŁYMSTOKU**

tel. /+48/ 89 532 01 05

fax /+48/ 89 715 21 42

### **BIURO W ŁODZI**

tel. /+48/ 609 221 421

fax /+48/ 89 715 21 42