

Safety blocks have been designed to bring together in a compact block, all organs necessary for a proper installation in which a hydropneumatic accumulator is located..

Use of this block allows you to group and comply with current safety standards.

Safety blocks "SB" base is composed of :

- Ball valve closure 90 ° to isolate the accumulator
- Ball valve ensures the decompression of the accumulator.
- Designed for safety valve, adjustable to maximum system pressure or maximum working pressure of the accumulator.
- Outlet pressure gauge.
- Provision of any solenoid valve by means of which you can unzip the circuit .



Encoding safety blocks base: SB 24 N ME200

SB : safety block

24: orifice size - size

Available in standard size 16:24

ME : manual bypass and valve arrangement for solenoid valve

200 : battery connection side

200 : 2 " suitable bladder accumulators connection 2" gas cyl F

114: 1 1/4 " suitable bladder accumulators connection 1 " 1/4 cyl gas F

034 : 3/4 " suitable bladder accumulators connection 3/4" gas cyl F

200L : suitable piston accumulators connection 2 "gas cyl F

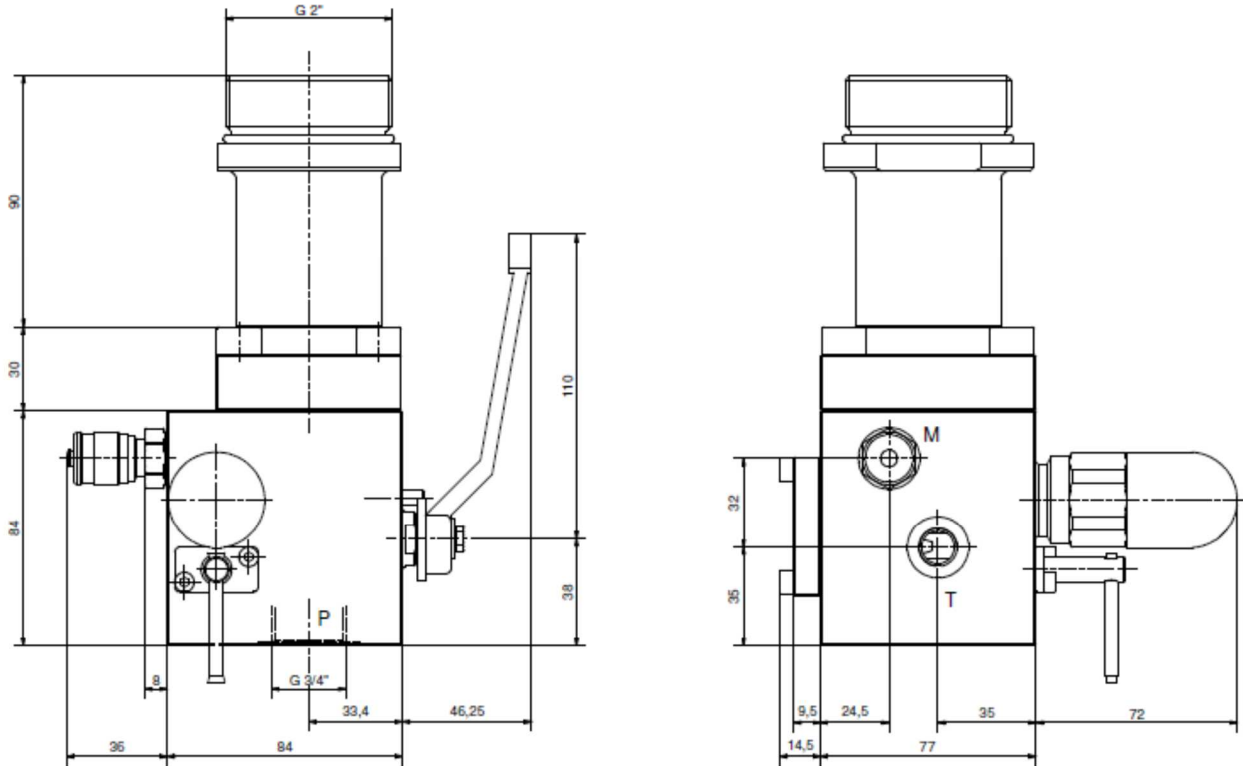
N: fluid compatibility

N: mineral oil - water and glycol

V: foreign phosphors

Dimensioni - Dimensions:

**SB 16 ME 200 N + DBDS 6 valve**



**SB 24 ME 200 N + DBDS 10 valve**

