

POMIAR PRZEPIYWU CIECZY

Przepływomierze Webtec typ RFIK

RFIK Series

Mechanical Hydraulic Tester

Up to

- 200 lpm, 54 US gpm
- 420 bar, 6000 psi

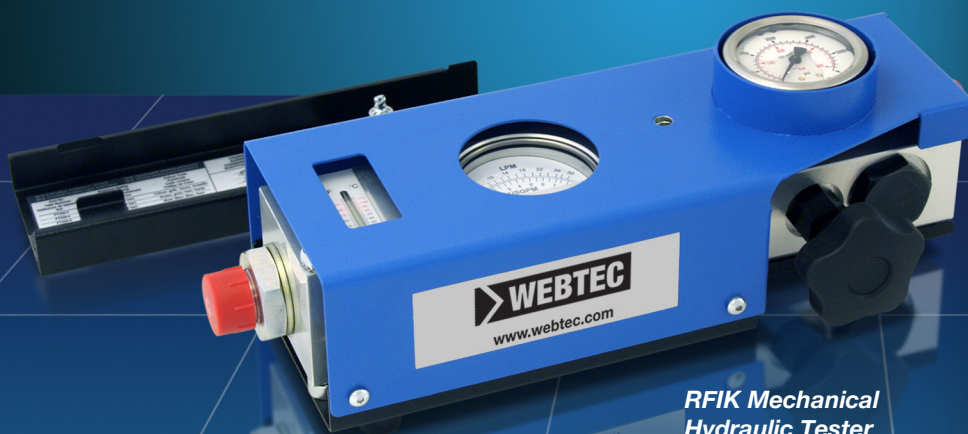
The RFIK mechanical hydraulic tester provides the ideal solution for servicing and commissioning hydraulic circuits on agricultural and other mobile machinery.

The kit comprises of a direct acting flow indicator with built in thermometer, a loading valve and a pressure gauge all built into a strong steel case with a removable lid.

The unit is self contained and requires no electrical power. The dials are clear and easy to read. Installation is extremely simple and the test kit can be connected into either the pressure or return lines. The loading valve and pressure gauge allow a progressive build up of system pressure in complete safety.

The test kit provides the service engineer with quick, accurate and simple performance testing of pumps, motors, valves, steering systems, cylinders and complete hydraulic circuits.

Note: This unit is not designed for permanent installation.



RFIK Mechanical Hydraulic Tester



Milwaukee, WI 53235, USA

Tel: +1 (414) 769-6400
sales-us@webtec.com

St. Ives, Cambs. PE27 3LZ, UK

Tel: +44 (0) 1480 397 400
sales-uk@webtec.com

www.webtec.com

Features

- **FLOW:** 2 - 200 lpm, 0.5 - 54 US gpm
- **PRESSURE:** 420 bar, 6000 psi
- **BUILT-IN** thermometer
- **ALLOWS** reverse flow
- **NO** batteries required
- **FLOW ACCURACY** within 4% FSD
- **LARGE** clear easy to read dials
- **SMOOTH** pressure control up to 420 bar, 6000 psi
- **SAFE** to use, with 'INTERPASS'TM internal safety protection system. Protects system and operator against accidental over-pressure in both flow directions



Hydraulic measurement and control

Specifications

Model Number	Calibrated Flow Range		Inlet fitting	Outlet fitting
	lpm	US gpm		
RFIK030-B-6	2 - 30	0.5 - 8	3/4" BSPP	3/4" BSPP
RFIK060-B-6	5 - 60	1 - 16	3/4" BSPP	3/4" BSPP
RFIK120-B-6	10 - 120	4 - 32	1" BSPP	1" BSPP
RFIK200-B-6	10 - 200	4 - 54	1" BSPP	1" BSPP
RFIK030-S-6	2 - 30	0.5 - 8	1-1/16" - 12UN JIC Male	1-1/16" - 12UN JIC Male
RFIK060-S-6	5 - 60	1 - 16	1-1/16" - 12UN JIC Male	1-1/16" - 12UN JIC Male
RFIK120-S-6	10 - 120	4 - 32	1-5/16" - 12UN JIC Male	1-5/16" - 12UN JIC Male
RFIK200-S-6	10 - 200	4 - 54	1-5/16" - 12UN JIC Male	1-5/16" - 12UN JIC Male

Functional specification

Ambient temperature: -10 to 50 °C (14 - 122 °F)

Fluid type: Hydraulic oils

Fluid temperature: 20 to 80 °C (68 - 176 °F) continuous use. Intermittently (< 10 minutes) up to 110 °C (230 °F).

Maximum pressure: 420 Bar (6000 psi)

Displays: Pressure and flow 2.5" (63mm) dials
Temperature 2" (50mm) long scale 20 to 120 °C (68 - 248 °F)

Accuracy: Flow: ± 4% of full scale
Pressure: ± 1.6% of full scale
Temperature: ± 2.5 °C (± 5 °F)

Dimensions: 310 x 105 x 120 mm (12-1/4" x 4-1/8" x 4-7/8")

Weight: 6.6 kg (14.5 lbs)

Construction material

Case: Painted steel - removable lid

RFI body: Aluminium 2011T6

Load valve body: Aluminium 2011T6

Internal components: Stainless steel, brass

Seals: Viton

Operation

There are two main elements to the RFIK - the reverse flow indicator (RFI) and the load valve. The flow indicator block houses a metering piston which moves against a calibrated spring. The piston is magnetically coupled to a rotary pointer to provide a direct reading of flow on the dial, flow scale is displayed in both lpm and US gpm. The thermometer also mounted in the flow block near the fluid flow. Both flow and temperature scales are shielded behind impact resistant windows.

The load valve is connected directly to the flow block and a 420 bar (6000 psi) pressure gauge is mounted in the inlet section of the loading valve. The valve is easy to operate and, combined with the pressure gauge, allows sensitive and progressive control of system pressure throughout the working range

Reverse flow

The tester will allow reverse flow but will not measure the reverse flow, i.e. the flow needle will indicate zero.

Safety Discs

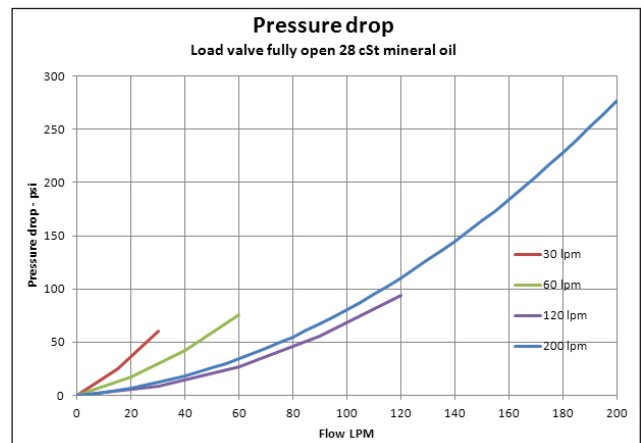
Protection against over pressure is provided by two internal safety discs which relieve at 440 bar (6400 psi) without external spillage. The safety discs are housed in a cartridge and are easily replaceable. Each unit is supplied with four spare discs

Calibration

All testers are calibrated with 28cSt oil as standard. Calibration certificates are available on request - this is a chargeable option. Other calibration on request - please consult sales office

Installation

It is recommended to connect with flexible hoses of at least 500mm (1.5') in length.

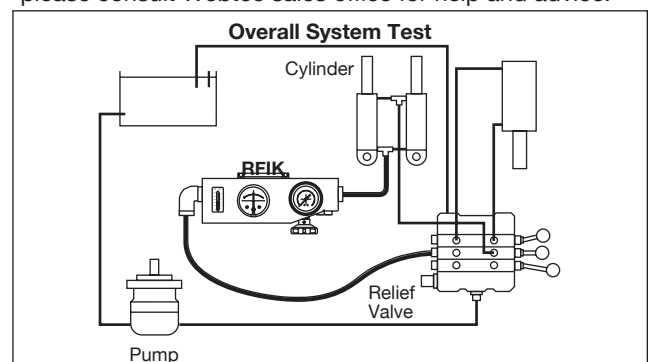


Accessories

A range of burst discs are available - please consult the sales office.

Ordering

To order a RFIK please quote the model number from the table above or if your required model is not in the table please consult Webtec sales office for help and advice.



CENTRALA ELBLĄG

ul. Rawska 19B
82-300 Elbląg

tel. /+48/ 55 625 51 00

fax /+48/ 55 625 51 01

Dział Handlowy

tel. /+48/ 55 625 51 51

elblag@hydropress.pl



www.hydropress.pl

ODDZIAŁ GDAŃSK

tel. /+48/ 55 625 51 21

fax /+48/ 55 625 51 22

ODDZIAŁ RUMIA

tel. /+48/ 58 679 34 15

fax /+48/ 55 625 51 25

ODDZIAŁ TYCHY

tel. /+48/ 32 787 52 88

fax /+48/ 55 625 51 38

ODDZIAŁ OLSZTYN

tel. /+48/ 89 532 01 05

fax /+48/ 89 715 21 42

ODDZIAŁ WARSZAWA

tel. /+48/ 22 468 86 97

fax /+48/ 55 625 51 32

BIURO WE WROCŁAWIU

tel. /+48/ 782 838 000

fax /+48/ 55 625 51 35

BIURO W KIELCACH

tel. /+48/ 885 995 501

fax /+48/ 55 625 51 01

BIURO W KRAKOWIE

tel. /+48/ 885 995 019

fax /+48/ 55 625 51 01

BIURO W OPOLU

tel. /+48/ 885 995 011

fax /+48/ 55 625 51 01

BIURO W BYDGOSZCZY

tel. /+48/ 790 222 771

fax /+48/ 55 625 51 01

BIURO W BIAŁYMSTOKU

tel. /+48/ 89 532 01 05

fax /+48/ 89 715 21 42

BIURO W ŁODZI

tel. /+48/ 609 221 421

fax /+48/ 89 715 21 42