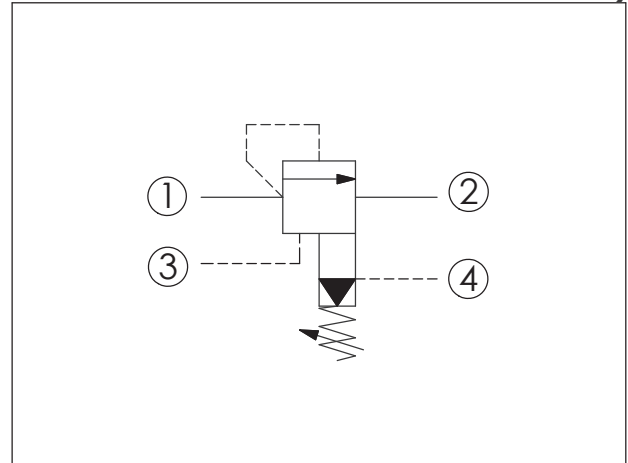
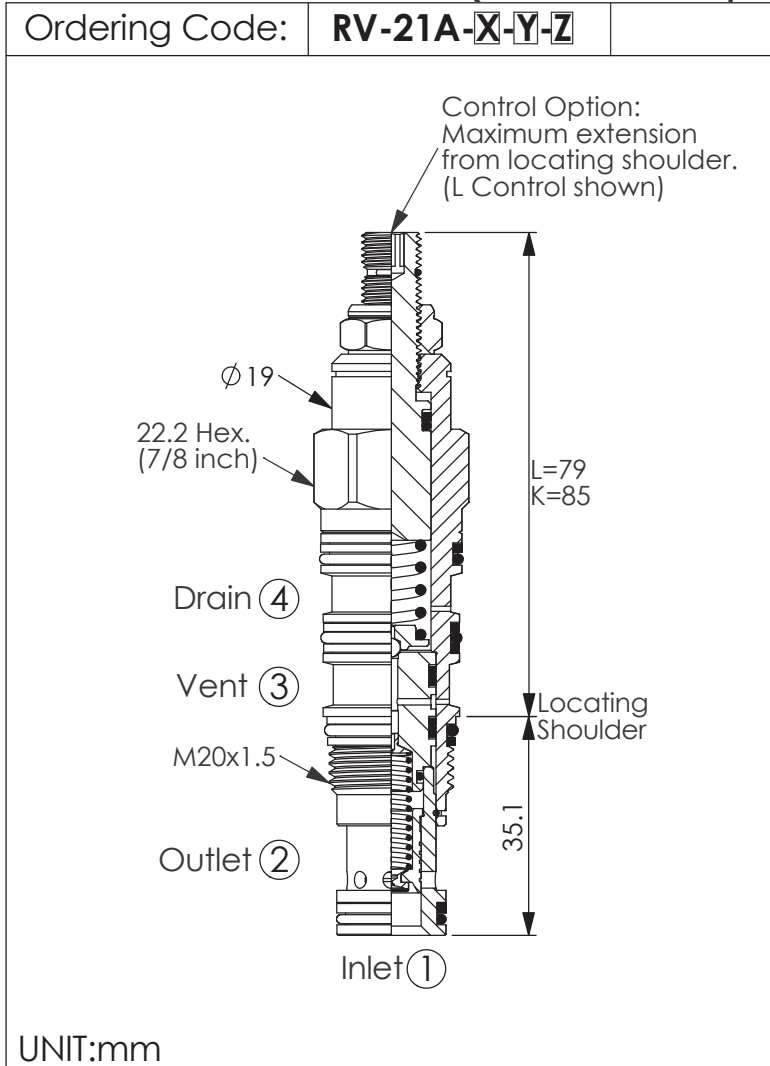
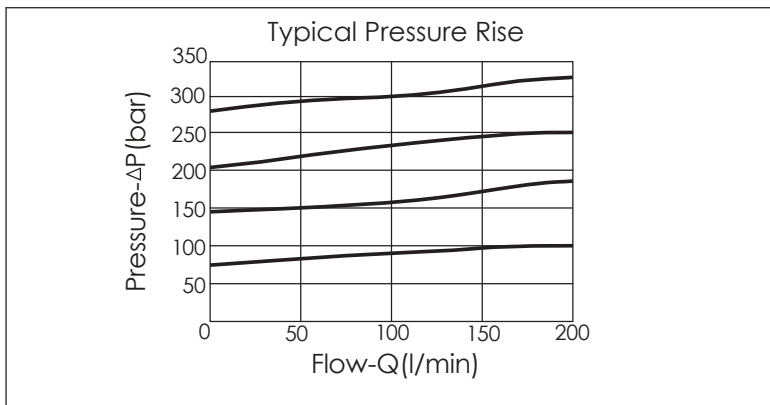




# ZAWORY PRZELEWOWE 4-DROGOWE



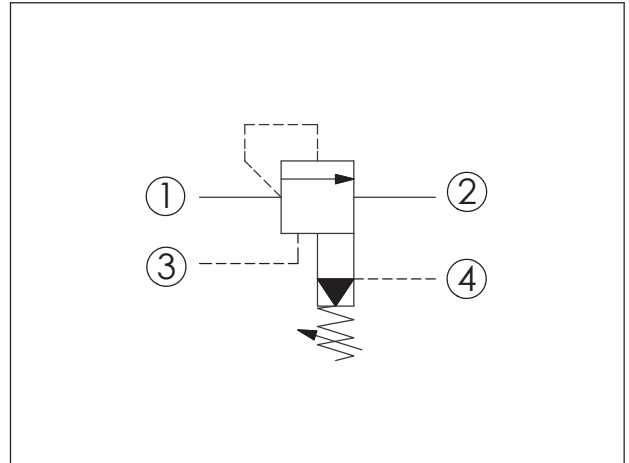
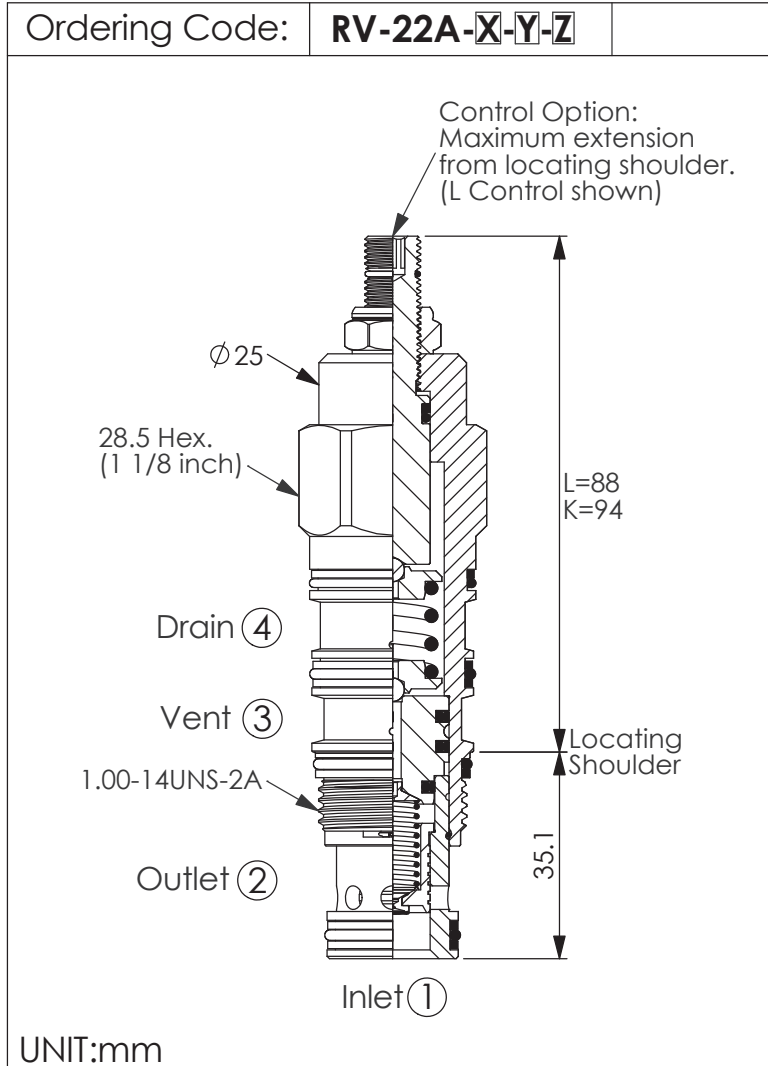
TECHNICAL DATA	
Max. Operating pressure:	350 bar
Rated flow:	60 l/min
Cavity-Tooling:	21A-4
Installation torque:	40-50 Nm
Weight:	0.20 kg



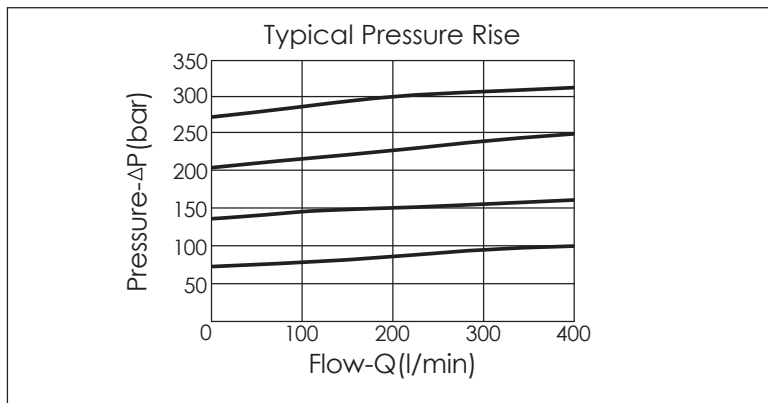
X	OPERATION	
40	Standard Type	
Response Time-Typical (10 ms) Maximum Leakage (33 cc/min./70 bar)		

Y	SPRINGS	
	ADJUSTMENT RANGES	
A	7 to 210 bar	(70 bar Standard Setting)
B	3.5 to 105 bar	(70 bar Standard Setting)
C	10.5 to 420 bar	(70 bar Standard Setting)
D	1.7 to 55 bar	(28 bar Standard Setting)
E	1.7 to 28 bar	(14 bar Standard Setting)
W	10.5 to 315 bar	(70 bar Standard Setting)

Z	OPTIONS	
L	Leakproof hex. socket screw.	
K	Handknob with Lock Knob.	
C	Stainless Steel Tamper Resistant Cover.	



TECHNICAL DATA		
Max. Setting:	420	bar
Rated flow:	120	l/min
Cavity-Tooling:	22A-4	
Installation torque:	60-70	Nm
Weight:	0.35 (Z:L)	kg

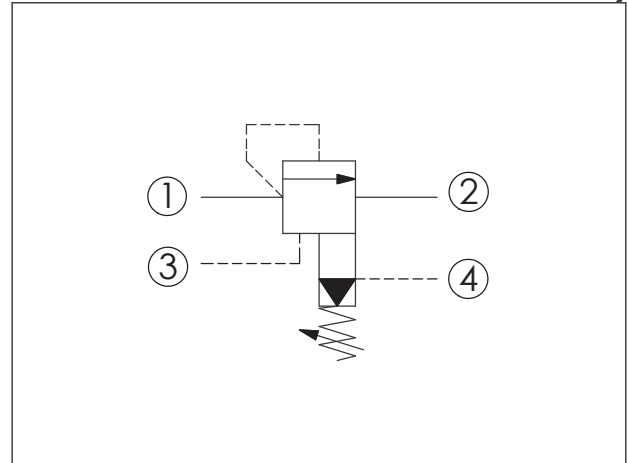
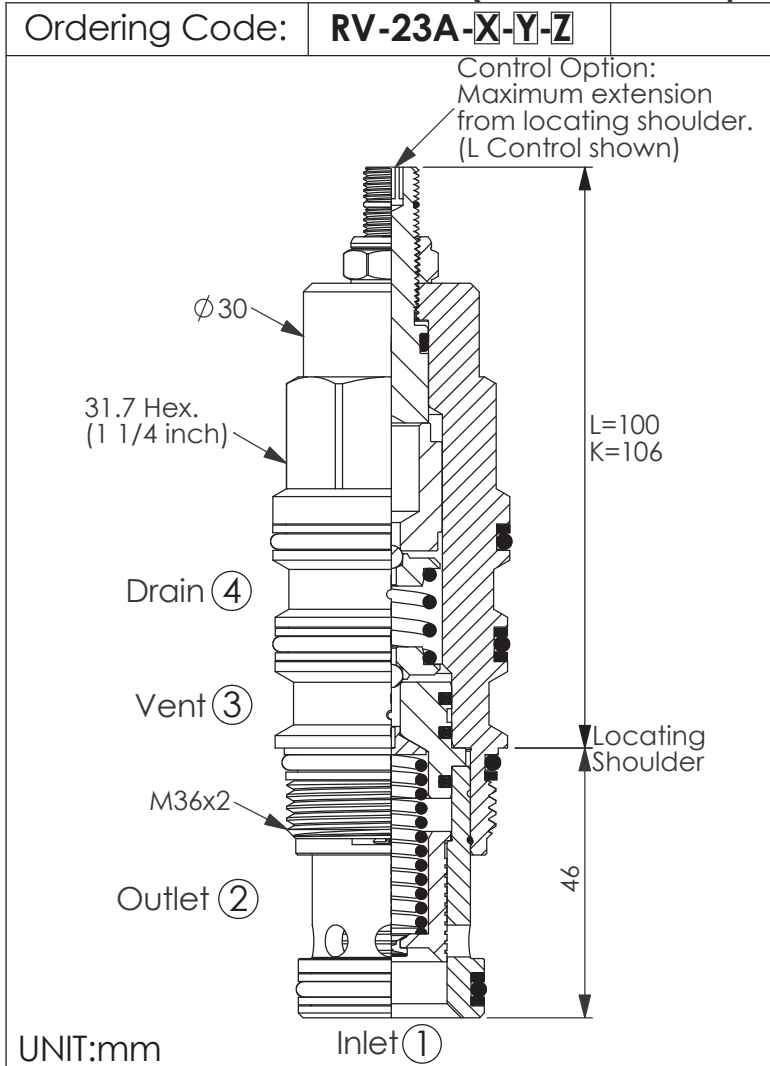


X	OPERATION	
40	Standard Type	
<ul style="list-style-type: none"> <li>Response Time-Typical (10 ms)</li> <li>Maximum Leakage (50 cc/min./70 bar) (46 cSt, 40°C)</li> </ul>		

Y	SPRINGS	
	ADJUSTMENT RANGES	
A	7-210 bar	(70 bar Standard Setting)
B	3.5-105 bar	(70 bar Standard Setting)
C	10.5-420 bar	(70 bar Standard Setting)
D	1.7-55 bar	(28 bar Standard Setting)
E	1.7-28 bar	(14 bar Standard Setting)
W	10.5-315 bar	(70 bar Standard Setting)

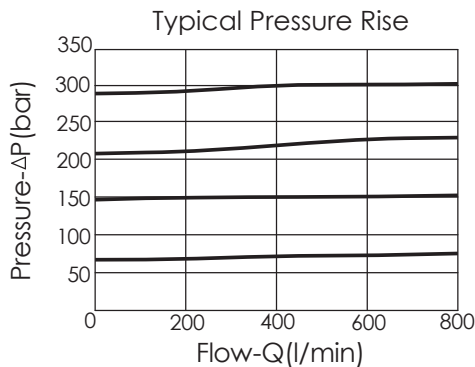
Z	OPTIONS	
L	Leakproof hex. socket screw.	
K	Handknob with Lock Knob.	
C	Stainless Steel Tamper Resistant Cover.	

(Ventable, Pilot Operated, Balanced Piston with External Drain)



### TECHNICAL DATA

Max. Operating pressure:	350 bar	
Rated flow:	240	l/min
Cavity-Tooling:	23A-4	
Installation torque:	200-215	Nm
Weight:	0.75	kg



**X**

### OPERATION

**40**

Standard Type

Response Time-Typical (10 ms)  
Maximum Leakage (66 cc/min./70 bar)

**Y**

### SPRINGS

#### ADJUSTMENT RANGES

<b>A</b>	7 to 210 bar (70 bar Standard Setting)
<b>B</b>	3.5 to 105 bar (70 bar Standard Setting)
<b>C</b>	10.5 to 420 bar (70 bar Standard Setting)
<b>D</b>	1.7 to 55 bar (28 bar Standard Setting)
<b>E</b>	1.7 to 28 bar (14 bar Standard Setting)
<b>W</b>	10.5 to 315 bar (70 bar Standard Setting)

**Z**

### OPTIONS

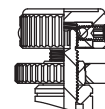
**L**

Leakproof hex.  
socket screw.



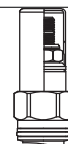
**K**

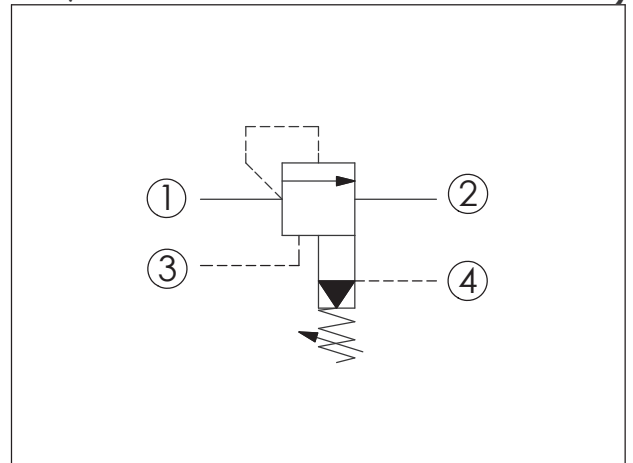
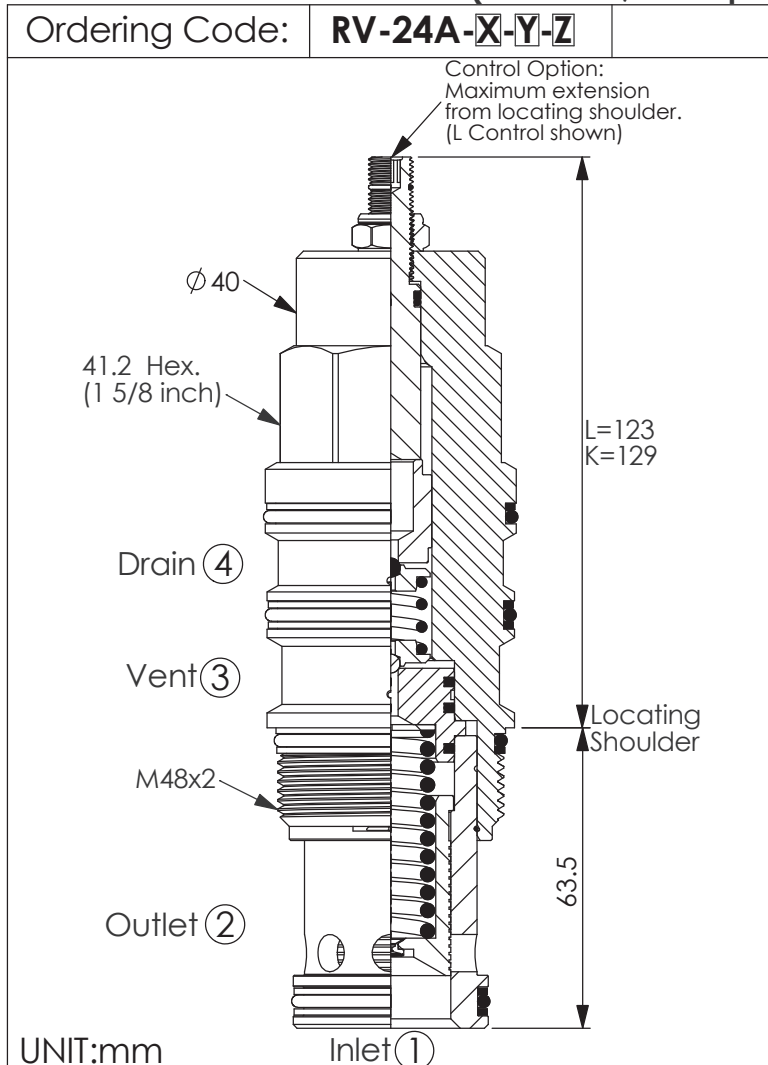
Handknob with  
Lock Knob.



**C**

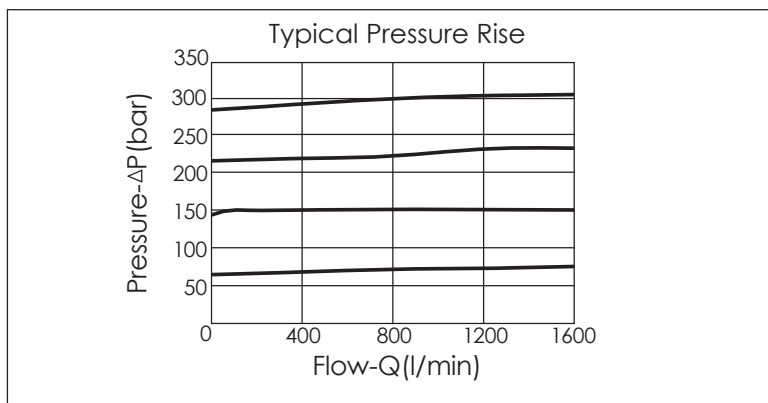
Stainless Steel  
Tamper Resistant  
Cover.





#### TECHNICAL DATA

Max. Operating pressure:	350 bar	
Rated flow:	480	l/min
Cavity-Tooling:	24A-4	
Installation torque:	465-500	Nm
Weight:	1.76	kg



X	OPERATION	
40	Standard Type	
Response Time-Typical (10 ms) Maximum Leakage (82 cc/min./70 bar)		

Y	SPRINGS	
	ADJUSTMENT RANGES	
A	7 to 210 bar	(70 bar Standard Setting)
B	3.5 to 105 bar	(70 bar Standard Setting)
C	10.5 to 420 bar	(70 bar Standard Setting)
D	1.7 to 55 bar	(28 bar Standard Setting)
E	1.7 to 28 bar	(14 bar Standard Setting)
W	10.5 to 315 bar	(70 bar Standard Setting)

Z	OPTIONS	
L	Leakproof hex. socket screw.	
K	Handknob with Lock Knob.	
C	Stainless Steel Tamper Resistant Cover.	



## CENTRALA ELBLĄG

Ul. Rawska 19B  
82-300 Elbląg

tel. /+48/ 55 625 51 00

fax /+48/ 55 625 51 01

### Dział Handlowy

tel. /+48/ 55 625 51 51

elblag@hydropress.pl



[www.hydropress.pl](http://www.hydropress.pl)

### ODDZIAŁ GDAŃSK

tel. /+48/ 55 625 51 21

fax /+48/ 55 625 51 22

### ODDZIAŁ RUMIA

tel. /+48/ 58 679 34 15

fax /+48/ 55 625 51 25

### ODDZIAŁ TYCHY

tel. /+48/ 32 787 52 88

fax /+48/ 55 625 51 38

### ODDZIAŁ OLSZTYN

tel. /+48/ 89 532 01 05

fax /+48/ 89 715 21 42

### ODDZIAŁ WARSZAWA

tel. /+48/ 22 468 86 97

fax /+48/ 55 625 51 32

### BIURO WE WROCŁAWIU

tel. /+48/ 782 838 000

fax /+48/ 55 625 51 35

### BIURO W KIELCACH

tel. /+48/ 885 995 501

fax /+48/ 55 625 51 01

### BIURO W KRAKOWIE

tel. /+48/ 885 995 019

fax /+48/ 55 625 51 01

### BIURO W OPOLU

tel. /+48/ 885 995 011

fax /+48/ 55 625 51 01

### BIURO W BYDGOSZCZY

tel. /+48/ 790 222 771

fax /+48/ 55 625 51 01

### BIURO W BIAŁYMSTOKU

tel. /+48/ 89 532 01 05

fax /+48/ 89 715 21 42

### BIURO W ŁODZI

tel. /+48/ 609 221 421

fax /+48/ 89 715 21 42