



ZAWORY REDUKCYJNE STEROWANE POŚREDNIO I BEZPOŚREDNIO

REDUCING VALVE (Pilot Operated Reducing)

Ordering Code: **PB-11A-X-Y-Z**

Control Option:
Maximum extension
from locating shoulder.
(L Control shown)

Ø 19

22.2 Hex.
(7/8 inch)

Drain (3)

M20x1.5

Inlet (2)

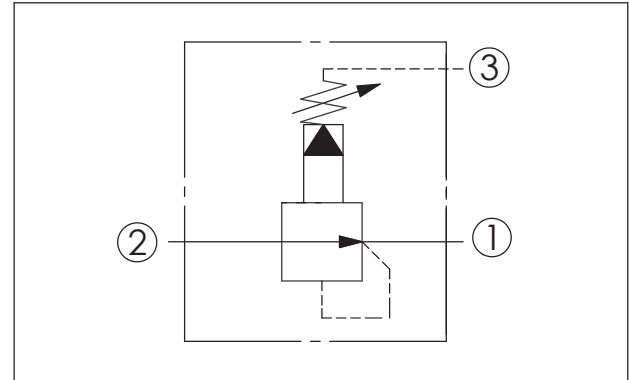
Reduced Pressure (1)

Locating Shoulder

L=64
K=70

35.1

UNIT:mm

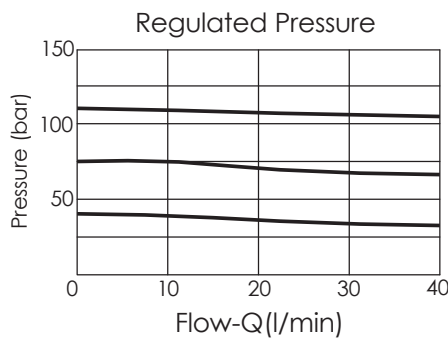


TECHNICAL DATA

Max.Operating pressure:	350	bar
Rated flow:	40	l/min
Cavity-Tooling:	11A-3	
Installation torque:	40-50	Nm
Weight:	0.16	kg
Control Pilot Flow (0.11-0.16 L/min.)		

X	OPERATION	
30	Standard Type	

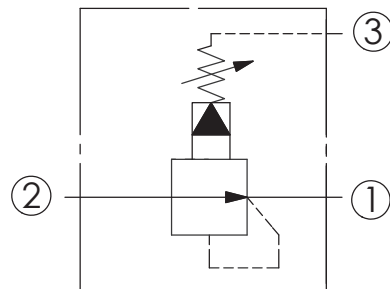
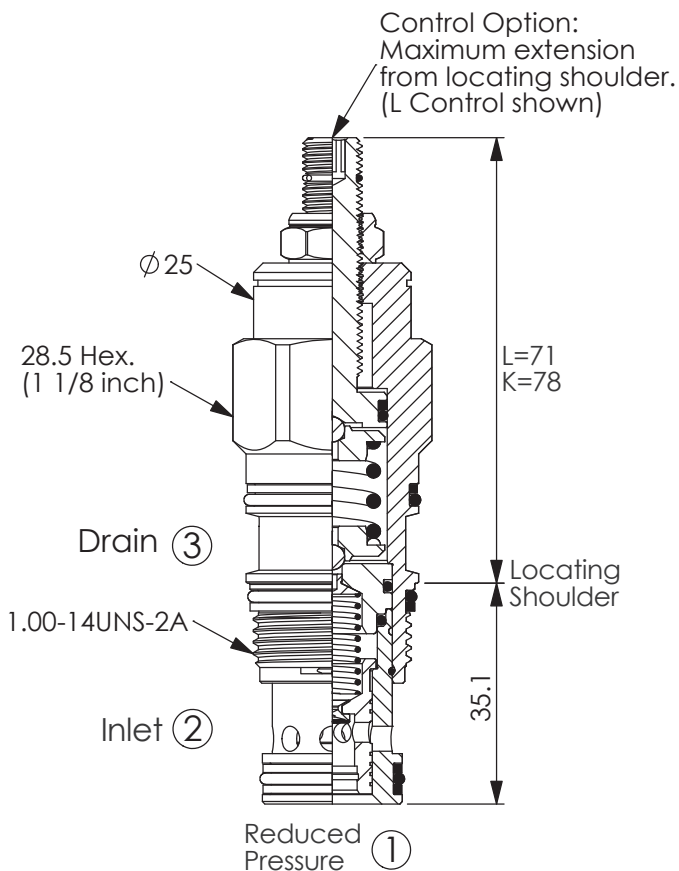
Z	OPTIONS	
L	Leakproof hex. socket screw.	
LF	Leakproof hex. socket screw. with Panel Mount.	
LP	Leakproof hex. socket screw. With stainless steel external metal components	
K	Handknob with Lock Knob.	
KF	Handknob with Panel Mount.	
G	Wrench Adjustment	



Y	SPRINGS	
	ADJUSTMENT RANGES	
A	7-210 bar (14 bar Standard Setting)	Maximum Differential=210 bar
B	3.5-105 bar (14 bar Standard Setting)	Maximum Differential=210 bar
D	1.7-55 bar (14 bar Standard Setting)	Maximum Differential=140 bar
E	1.7-28 bar (14 bar Standard Setting)	Maximum Differential=140 bar
N	4-55 bar (14 bar Standard Setting)	Maximum Differential=140 bar
Q	4-28 bar (14 bar Standard Setting)	Maximum Differential=140 bar
W	10.5-315 bar (14 bar Standard Setting)	350 bar inlet pressure

REDUCING VALVE (Pilot Operated Reducing)

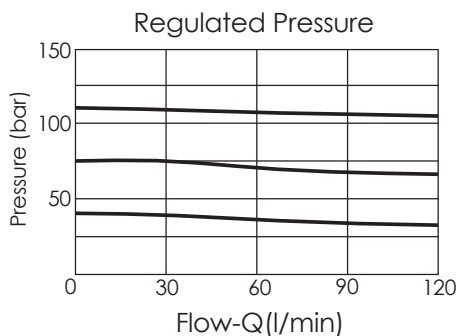
Ordering Code: **PB-2A-X-Y-Z**



TECHNICAL DATA

Max. Operating pressure:	350	bar
Rated flow:	80	l/min
Cavity-Tooling:	2A-3	
Installation torque:	60-70	Nm
Weight:	0.29 (Z:L)	kg
Control Pilot Flow (0.16-0.25 L/min.)		

UNIT:mm



X OPERATION

30	Standard Type
35	Impact Resistant Type (Without Filter)

Y SPRINGS

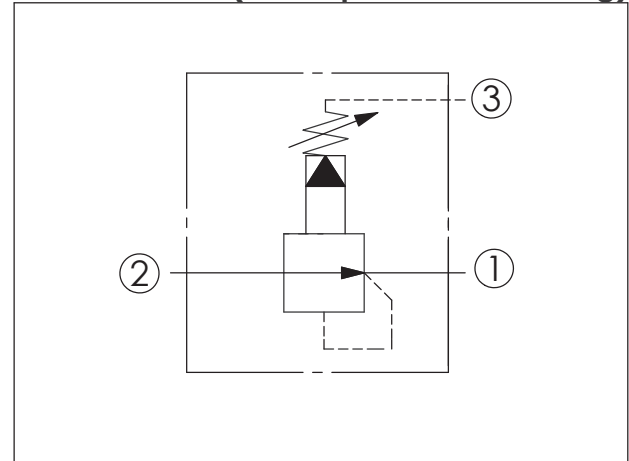
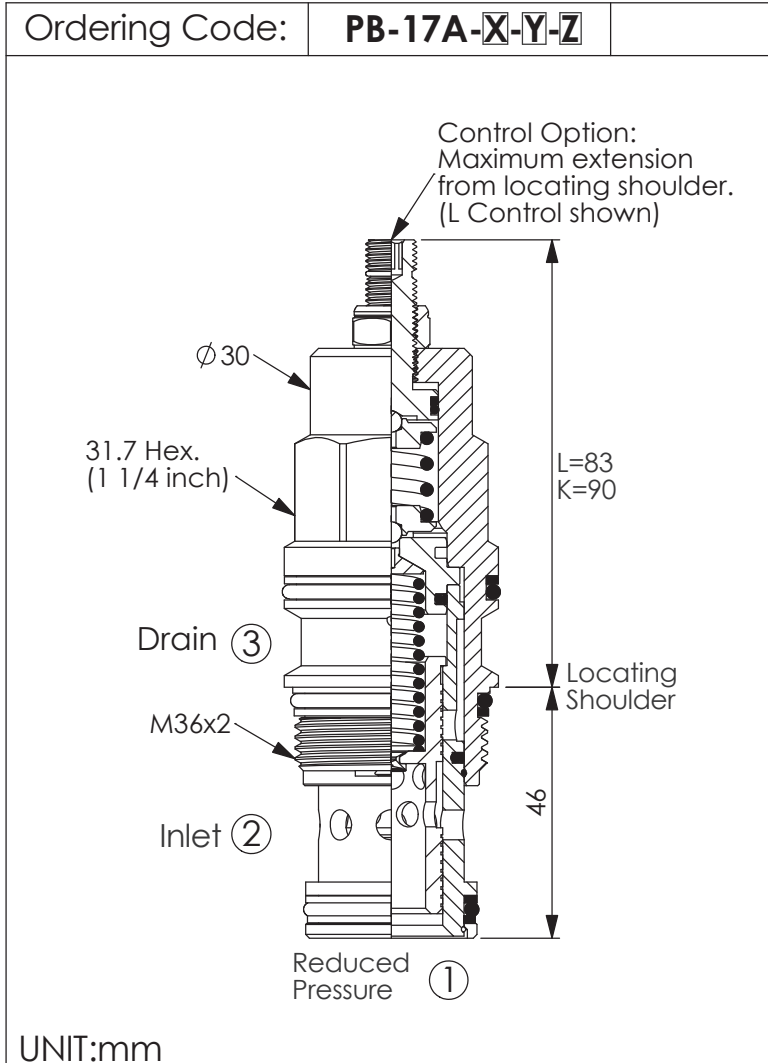
ADJUSTMENT RANGES

A	7-210 bar (14 bar Standard Setting) Maximum Differential=210 bar
B	3.5-105 bar (14 bar Standard Setting) Maximum Differential=210 bar
N	4-55 bar (14 bar Standard Setting) Maximum Differential=140 bar
Q	4-28 bar (14 bar Standard Setting) Maximum Differential=140 bar
W	10.5-315 bar (14 bar Standard Setting) 350 bar inlet pressure

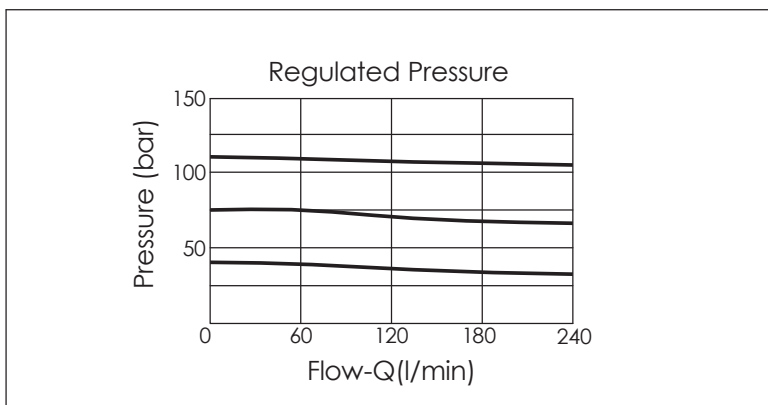
Z OPTIONS

L	Leakproof hex. socket screw.	
LP	Leakproof hex. socket screw. With stainless steel external metal components	
K	Handknob with Lock Knob.	

REDUCING VALVE (Pilot Operated Reducing)



TECHNICAL DATA	
Max.Operating pressure:	350 bar
Rated flow:	160 l/min
Cavity-Tooling:	17A-3
Installation torque:	200-215 Nm
Weight:	0.57 (Z:L) kg
Control Pilot Flow (0.25-0.33 L/min.)	

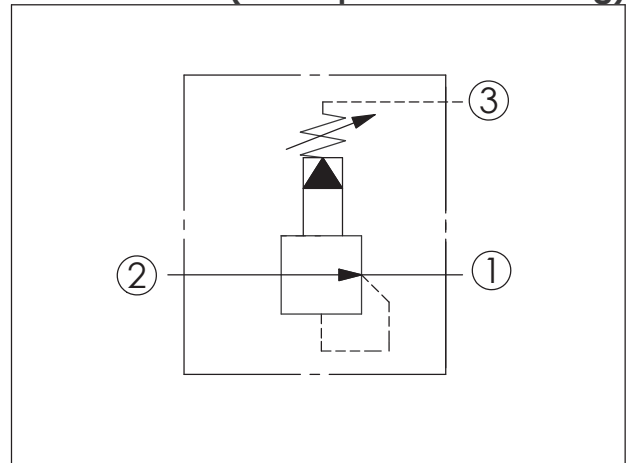
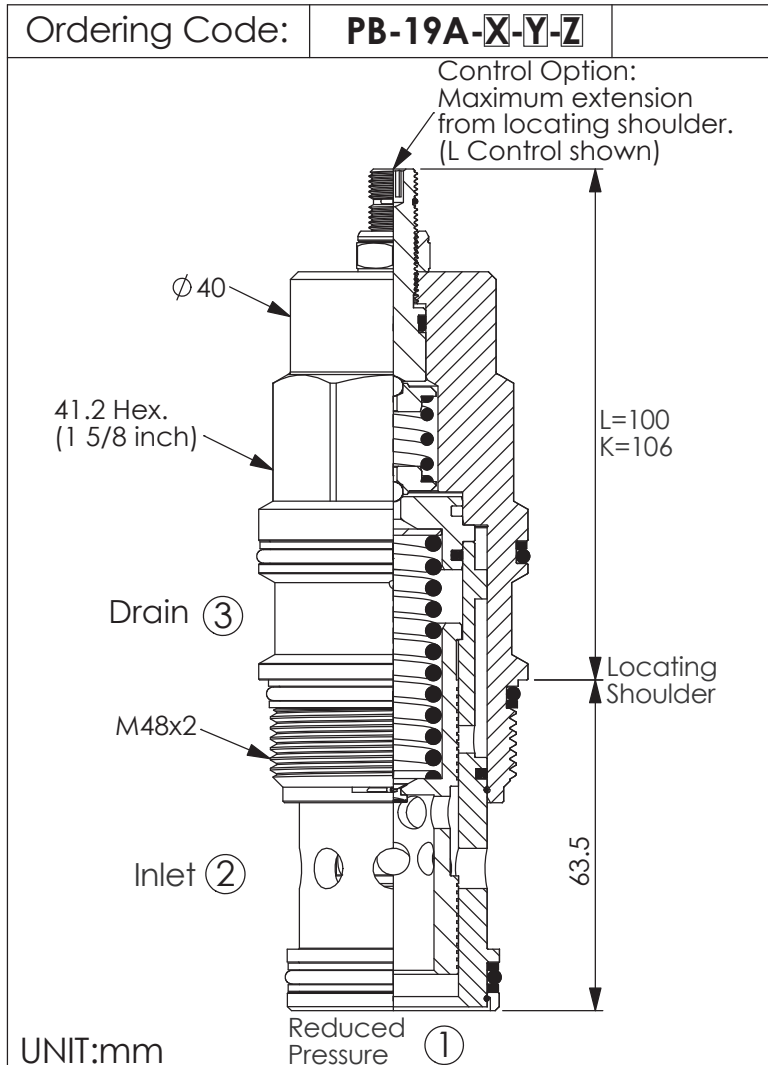


X	OPERATION	
30	Standard Type	
35	Impact Resistant Type (Without Filter)	

Y	SPRINGS	
	ADJUSTMENT RANGES	
A	7-210 bar (14 bar Standard Setting) Maximum Differential=210 bar	
B	3.5-105 bar (14 bar Standard Setting) Maximum Differential=210 bar	
N	4-55 bar (14 bar Standard Setting) Maximum Differential=140 bar	
Q	4-28 bar (14 bar Standard Setting) Maximum Differential=140 bar	
W	10.5-315 bar (14 bar Standard Setting) 350 bar inlet pressure	

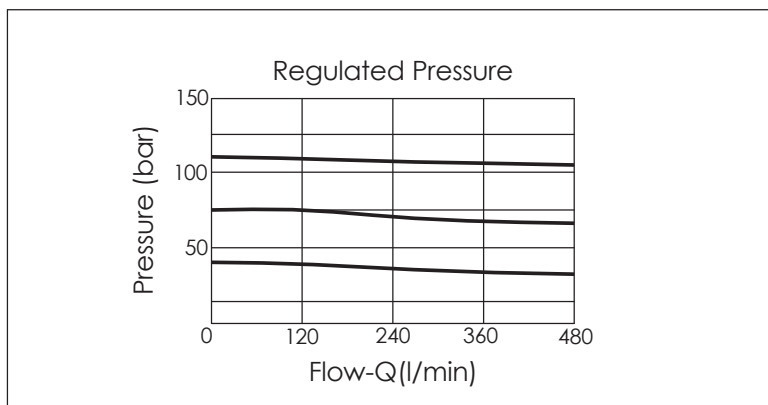
Z	OPTIONS	
L	Leakproof hex. socket screw.	
K	Handknob with Lock Knob.	

REDUCING VALVE (Pilot Operated Reducing)



TECHNICAL DATA

Max. Operating pressure:	350	bar
Rated flow:	320	l/min
Cavity-Tooling:	19A-3	
Installation torque:	465-500	Nm
Weight:	1.31 (Z:L)	kg
Control Pilot Flow (0.25-0.33 L/min.)		



X	OPERATION	
30	Standard Type	
35	Impact Resistant Type (Without Filter)	

Y	SPRINGS	
	ADJUSTMENT RANGES	
A	7-210 bar (14 bar Standard Setting) Maximum Differential=210 bar	
B	3.5-105 bar (14 bar Standard Setting) Maximum Differential=210 bar	
N	4-55 bar (14 bar Standard Setting) Maximum Differential=140 bar	
Q	4-28 bar (14 bar Standard Setting) Maximum Differential=140 bar	
W	10.5-315 bar (14 bar Standard Setting) 350 bar inlet pressure	

Z	OPTIONS	
L	Leakproof hex. socket screw.	
K	Handknob with Lock Knob.	

REDUCING VALVE (Pilot Operated Reducing main stage with integral 8A control cavity)

Ordering Code: **PB-11A-X-Y-8**

22.2 Hex. (7/8 inch)

8A Cavity

Tank (3)

M20x1.5

Inlet (2)

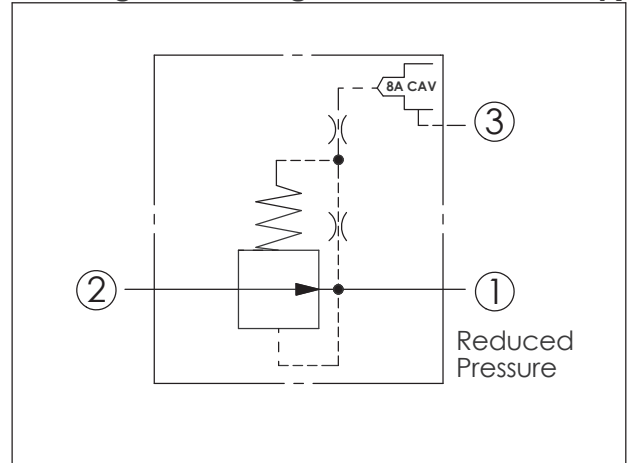
Reduced Pressure (1)

30.2

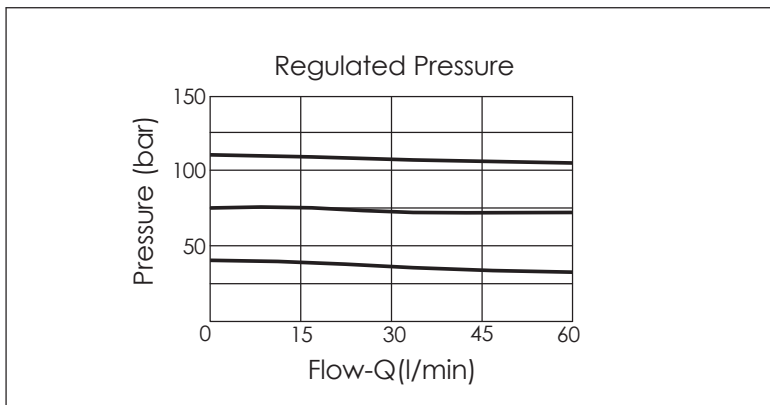
35.1

Locating Shoulder

UNIT:mm



TECHNICAL DATA	
Max.Operating pressure:	350 bar
Rated flow:	40 l/min
Cavity-Tooling:	11A-3
Installation torque:	40-50 Nm
Weight:	0.10 kg
Control Pilot Flow (0.11-0.16 L/min.)	



X	OPERATION
30	Standard Type

Y	SPRINGS
	MINIMUM CONTROL PRESSURE
D	1.7 bar (25 psi)
W	7 bar (100 psi)
	Maximum inlet pressure is determined by the bias spring. The D spring is limited to 140 bar (2000 psi) maximum differential pressure and the W spring is limited to 350 bar (5000 psi) maximum inlet pressure.

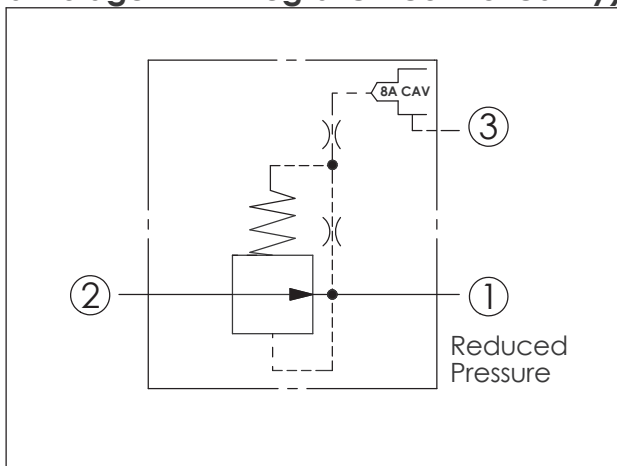
--	--

(Pilot Operated Reducing main stage with integral 8A control cavity)

REDUCING VALVE

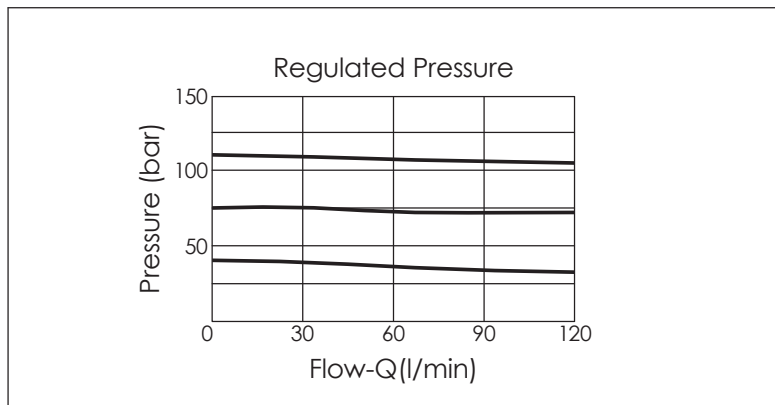
Ordering Code: **PB-2A-X-Y-8**

UNIT:mm



TECHNICAL DATA

Max.Operating pressure:	350	bar
Rated flow:	80	l/min
Cavity-Tooling:	2A-3	
Installation torque:	60-70	Nm
Weight:	0.21	kg
Control Pilot Flow (0.16-0.25 L/min.)		



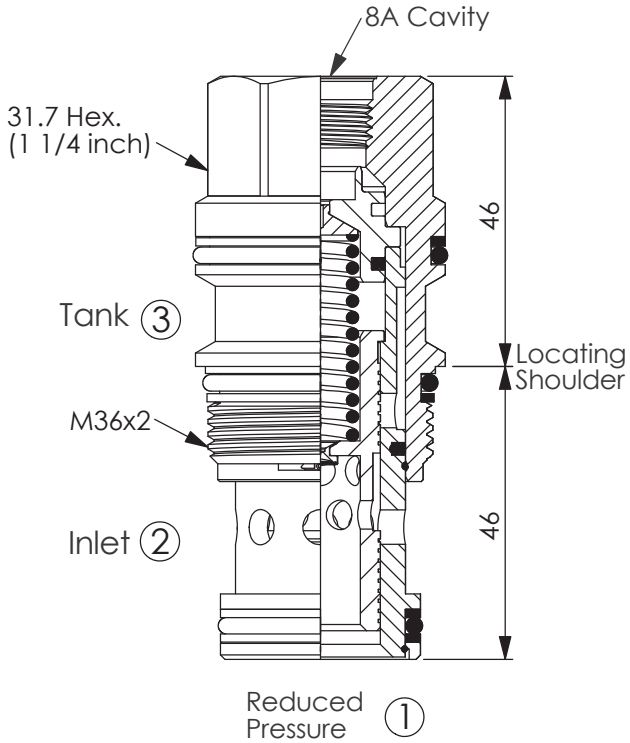
X	OPERATION	
30	Standard Type	

Y	SPRINGS	
	MINIMUM CONTROL PRESSURE	
D	1.7 bar (25 psi)	
W	7 bar (100 psi)	
	Maximum inlet pressure is determined by the bias spring. The D spring is limited to 140 bar (2000 psi) maximum differential pressure and the W spring is limited to 350 bar (5000 psi) maximum inlet pressure.	

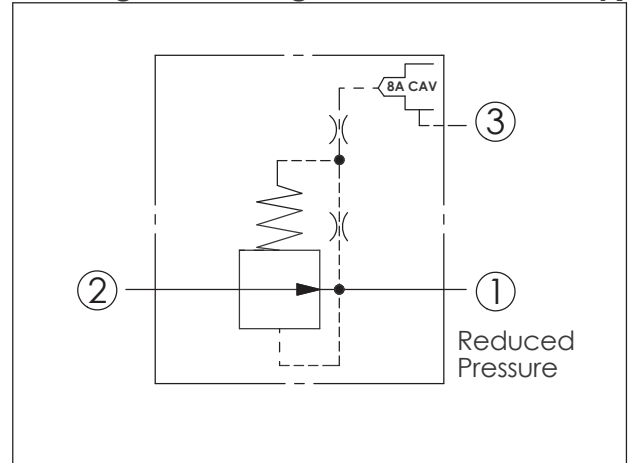
--	--	--

REDUCING VALVE (Pilot Operated Reducing main stage with integral 8A control cavity)

Ordering Code: **PB-17A-X-Y-8**

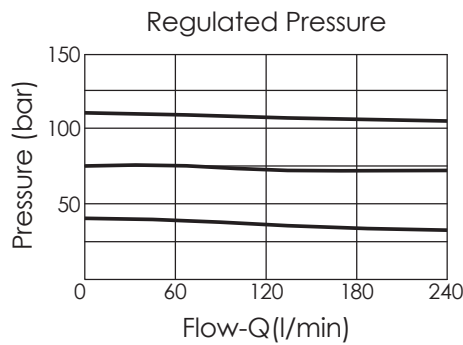


UNIT:mm



TECHNICAL DATA

Max.Operating pressure:	350	bar
Rated flow:	160	l/min
Cavity-Tooling:	17A-3	
Installation torque:	200-215	Nm
Weight:	0.46	kg
Control Pilot Flow (0.25-0.33 L/min.)		



X OPERATION

30 Standard Type

Y SPRINGS

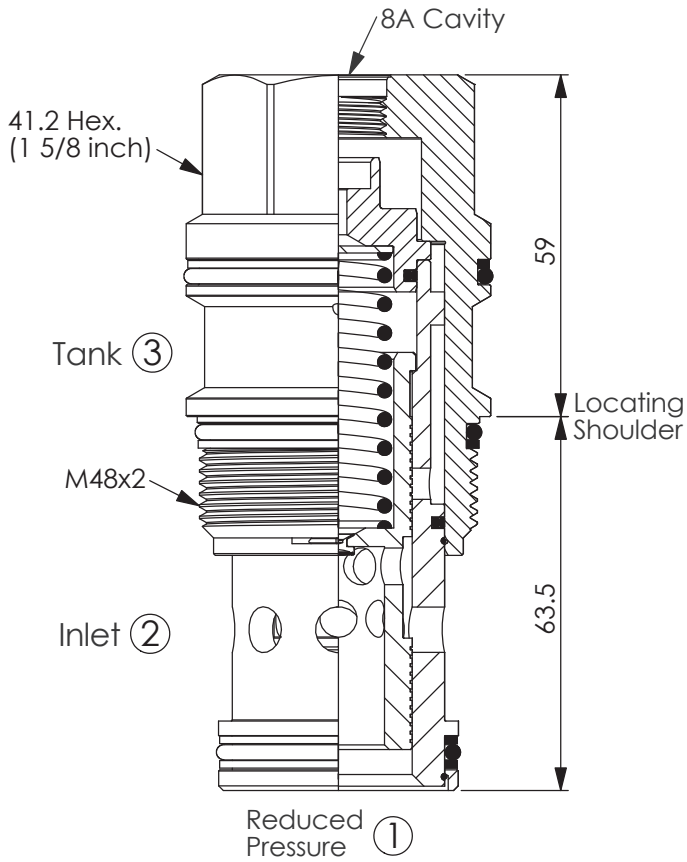
D 1.7 bar (25 psi)

W 7 bar (100 psi)

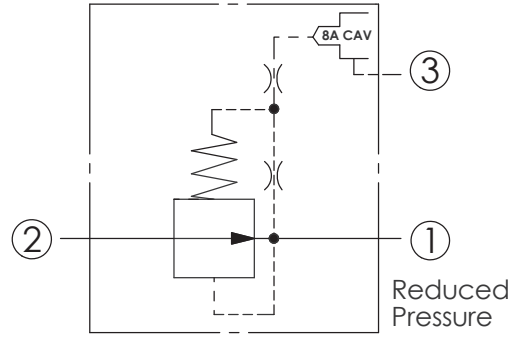
Maximum inlet pressure is determined by the bias spring. The D spring is limited to 140 bar (2000 psi) maximum differential pressure and the W spring is limited to 350 bar (5000 psi) maximum inlet pressure.

REDUCING VALVE (Pilot Operated Reducing main stage with integral 8A control cavity)

Ordering Code: **PB-19A-X-Y-8**

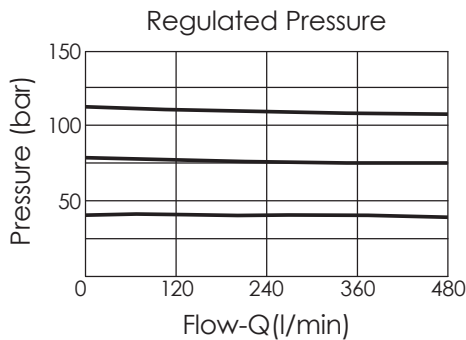


UNIT:mm



TECHNICAL DATA

Max.Operating pressure:	350	bar
Rated flow:	320	l/min
Cavity-Tooling:	19A-3	
Installation torque:	475-500	Nm
Weight:	1.05	kg
Control Pilot Flow (0.25-0.33 L/min.)		



X OPERATION

30 Standard Type

Y SPRINGS

MINIMUM CONTROL PRESSURE

D 1.7 bar (25 psi)

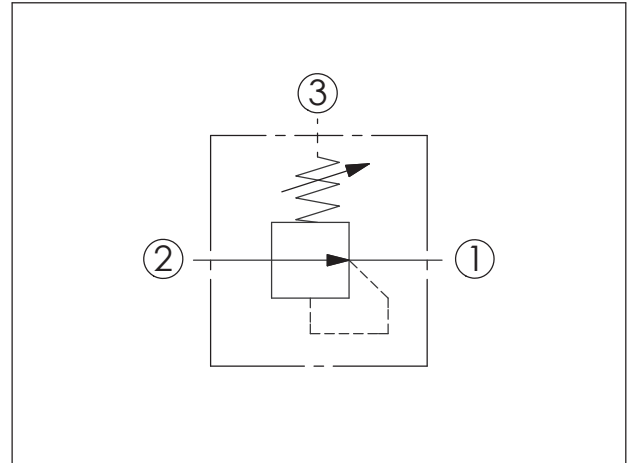
W 7 bar (100 psi)

Maximum inlet pressure is determined by the bias spring. The D spring is limited to 140 bar (2000 psi) maximum differential pressure and the W spring is limited to 350 bar (5000 psi) maximum inlet pressure.

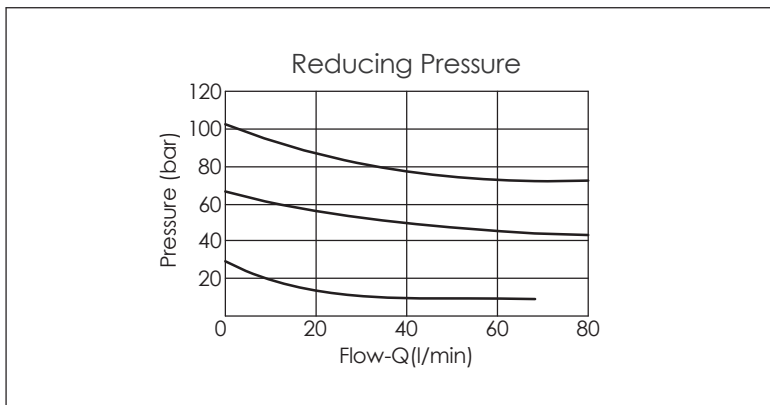
REDUCING VALVE (Direct Acting)

Ordering Code: **PD-11A-X-Y-Z**

UNIT:mm



TECHNICAL DATA	
Max.Operating pressure:	350 bar
Rated flow:	40 l/min
Cavity-Tooling:	11A-3
Installation torque:	40-50 Nm
Weight:	0.19 (Z:L) kg



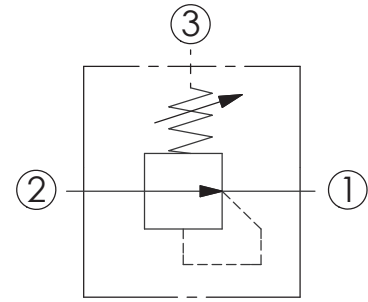
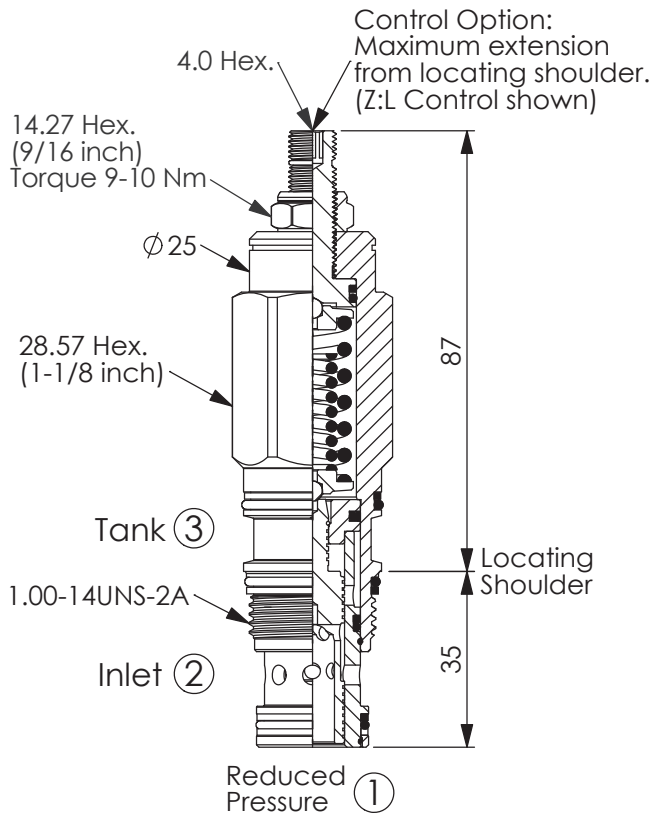
X	OPERATION	
3J	Without Relief function	
• Maximum Leakage (30 cc/min./70 bar) (46 cSt, 40°C)		

Y	SPRINGS	
	ADJUSTMENT RANGES	
A	35-210 bar	(50 bar Standard Setting)
B	3.5-105 bar	(14 bar Standard Setting)
D	1.7-55 bar	(14 bar Standard Setting)
E	1.7-28 bar	(14 bar Standard Setting)
S	1.7-14 bar	(7 bar Standard Setting)
W	50-315 bar	(70 bar Standard Setting)

Z	OPTIONS	
L	Leakproof hex. socket screw.	
C	Stainless Steel Tamper Resistant Cover.	
CP	Stainless Steel Tamper Resistant Cover. With stainless steel external metal components	

REDUCING VALVE (Direct Acting)

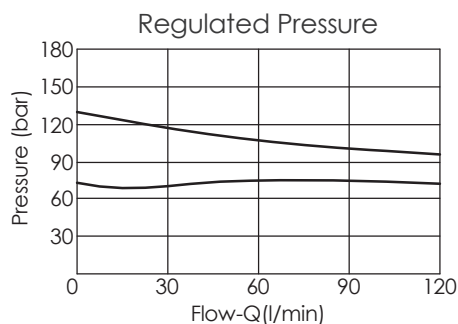
Ordering Code: **PD-2A-X-Y-Z**



TECHNICAL DATA

Max. Operating pressure:	350	bar
Rated flow:	80	l/min
Cavity-Tooling:	2A-3	
Installation torque:	60-70	Nm
Weight:	0.36 (Z:L)	kg

UNIT:mm



X OPERATION

3J Without Relief function


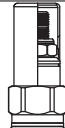
· Maximum Leakage (50 cc/min./70 bar)
(46 cSt, 40°C)

Y SPRINGS

ADJUSTMENT RANGES

A	50-210 bar (70 bar Standard Setting)	
B	20-105 bar (35 bar Standard Setting)	
D	14-55 bar (28 bar Standard Setting)	
E	7-28 bar (14 bar Standard Setting)	
S	3.5-14 bar (7 bar Standard Setting)	

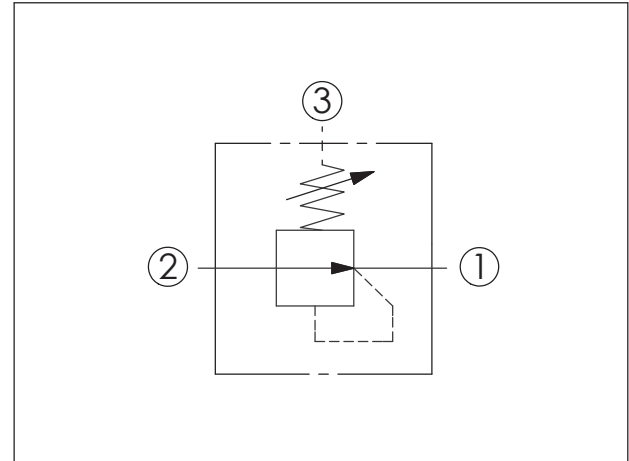
Z OPTIONS

L	Leakproof hex. socket screw.	
C	Stainless Steel Tamper Resistant Cover.	

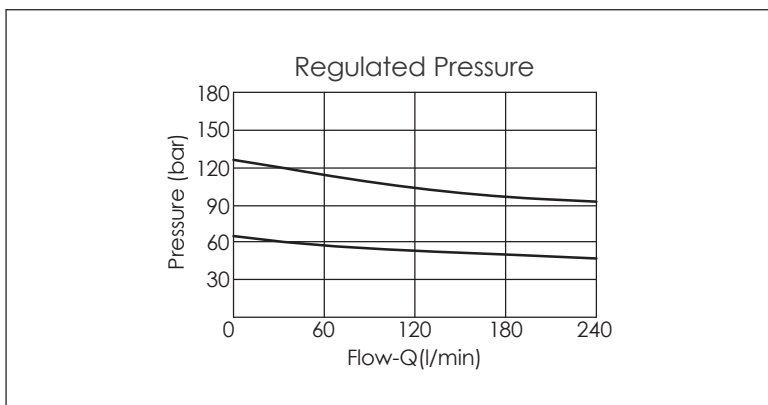
REDUCING VALVE (Direct Acting)

Ordering Code: **PD-17A-X-Y-Z**

UNIT:mm



TECHNICAL DATA	
Max.Operating pressure:	350 bar
Rated flow:	160 l/min
Cavity-Tooling:	17A-3
Installation torque:	200-215 Nm
Weight:	0.71 (Z:L) kg



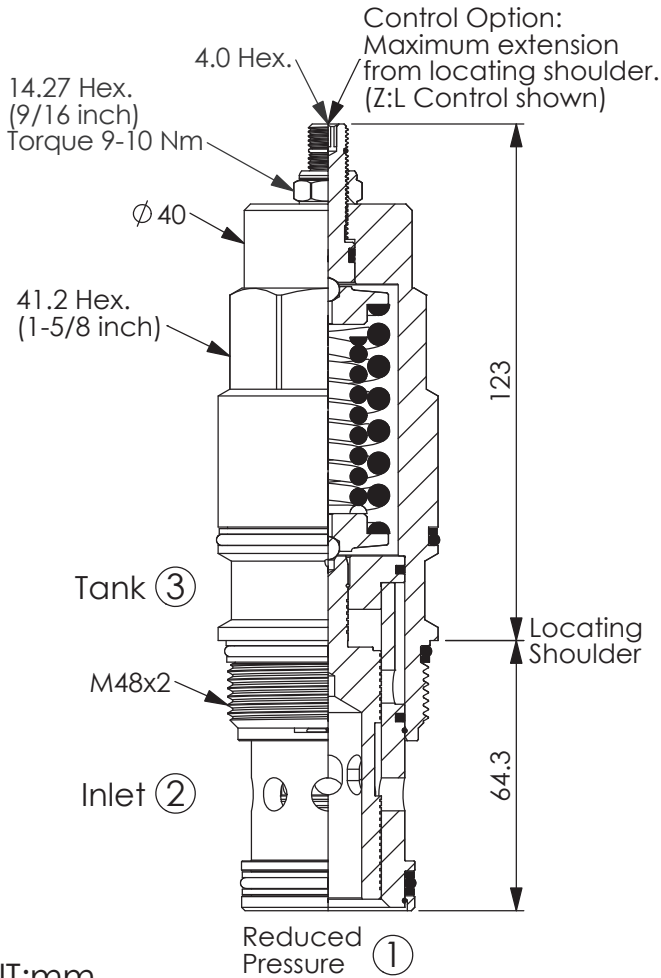
X	OPERATION
3J	Without Relief function
<ul style="list-style-type: none"> Maximum Leakage (65 cc/min./70 bar) (46 cSt, 40°C) 	

Y	SPRINGS	
	ADJUSTMENT RANGES	
A	50-210 bar	(70 bar Standard Setting)
B	20-105 bar	(35 bar Standard Setting)
D	14-55 bar	(28 bar Standard Setting)
E	7-28 bar	(14 bar Standard Setting)
S	3.5-14 bar	(7 bar Standard Setting)
W	76-315 bar	(76 bar Standard Setting)

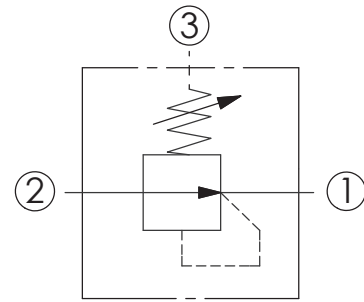
Z	OPTIONS	
L	Leakproof hex. socket screw.	
C	Stainless Steel Tamper Resistant Cover.	

REDUCING VALVE (Direct Acting)

Ordering Code: **PD-19A-X-Y-Z**

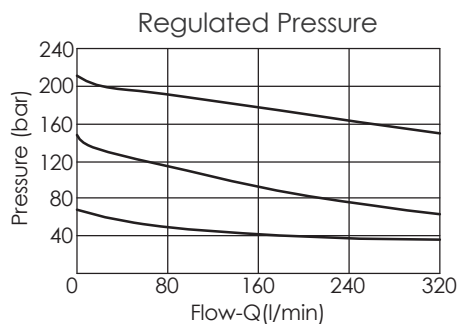


UNIT:mm



TECHNICAL DATA

Max.Operating pressure:	350	bar
Rated flow:	320	l/min
Cavity-Tooling:	19A-3	
Installation torque:	465-500	Nm
Weight:	1.59 (Z:L)	kg



X OPERATION

3J Without Relief function

• Maximum Leakage (80 cc/min./70 bar)
(46 cSt, 40°C)

Y

SPRINGS

ADJUSTMENT RANGES

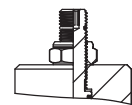
A	50-210 bar (70 bar Standard Setting)
B	20-105 bar (35 bar Standard Setting)
D	14-55 bar (28 bar Standard Setting)
E	7-28 bar (14 bar Standard Setting)
S	3.5-14 bar (7 bar Standard Setting)
W	76-315 bar (76 bar Standard Setting)

Z

OPTIONS

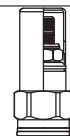
L

Leakproof hex. socket screw.



C

Stainless Steel Tamper Resistant Cover.



CENTRALA ELBLĄG

Ul. Rawska 19B
82-300 Elbląg

tel. /+48/ 55 625 51 00

fax /+48/ 55 625 51 01

Dział Handlowy

tel. /+48/ 55 625 51 51

elblag@hydropress.pl



www.hydropress.pl

ODDZIAŁ GDAŃSK

tel. /+48/ 55 625 51 21

fax /+48/ 55 625 51 22

ODDZIAŁ RUMIA

tel. /+48/ 58 679 34 15

fax /+48/ 55 625 51 25

ODDZIAŁ TYCHY

tel. /+48/ 32 787 52 88

fax /+48/ 55 625 51 38

ODDZIAŁ OLSZTYN

tel. /+48/ 89 532 01 05

fax /+48/ 89 715 21 42

ODDZIAŁ WARSZAWA

tel. /+48/ 22 468 86 97

fax /+48/ 55 625 51 32

BIURO WE WROCŁAWIU

tel. /+48/ 782 838 000

fax /+48/ 55 625 51 35

BIURO W KIELCACH

tel. /+48/ 885 995 501

fax /+48/ 55 625 51 01

BIURO W KRAKOWIE

tel. /+48/ 885 995 019

fax /+48/ 55 625 51 01

BIURO W OPOLU

tel. /+48/ 885 995 011

fax /+48/ 55 625 51 01

BIURO W BYDGOSZCZY

tel. /+48/ 790 222 771

fax /+48/ 55 625 51 01

BIURO W BIAŁYMSTOKU

tel. /+48/ 89 532 01 05

fax /+48/ 89 715 21 42

BIURO W ŁODZI

tel. /+48/ 609 221 421

fax /+48/ 89 715 21 42