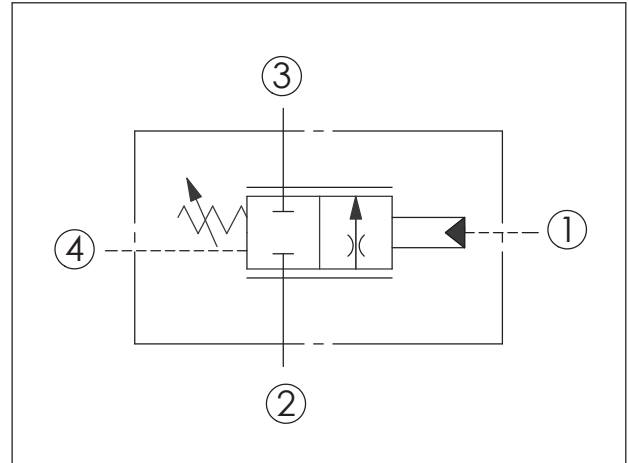
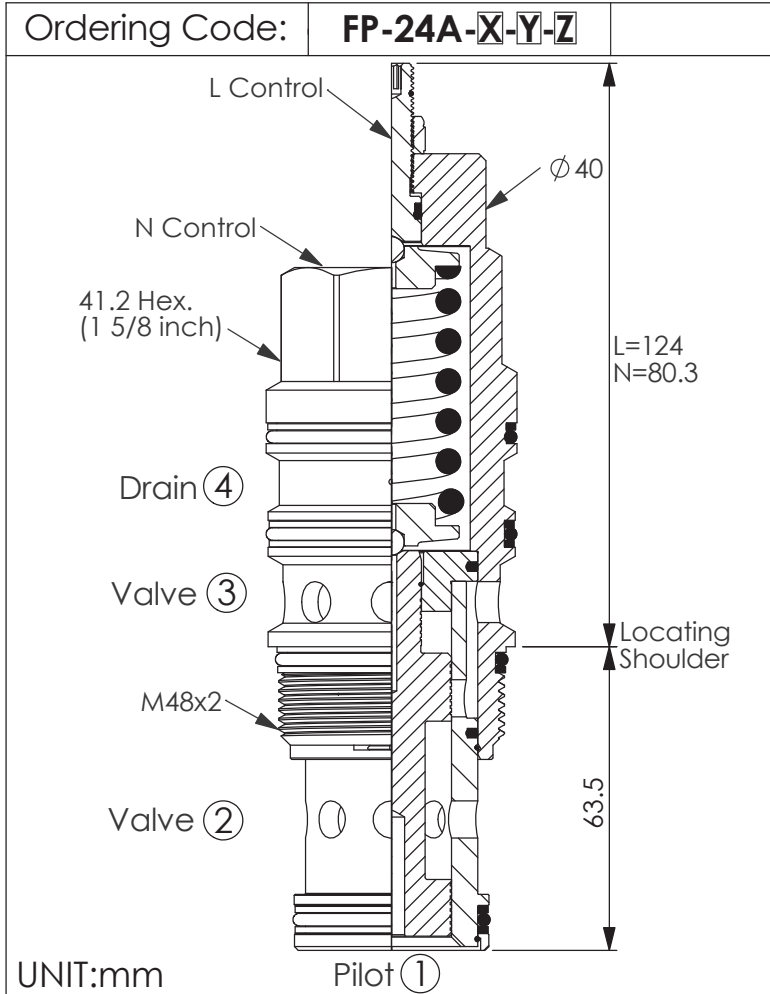




ZAWORY REGULUJĄCE PRZEPŁYW ZWROTNO-DŁAWIĄCE

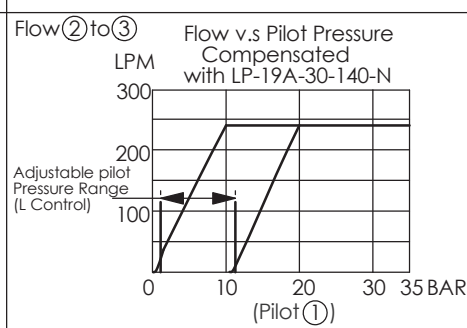
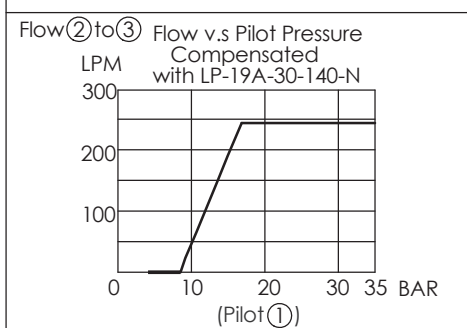
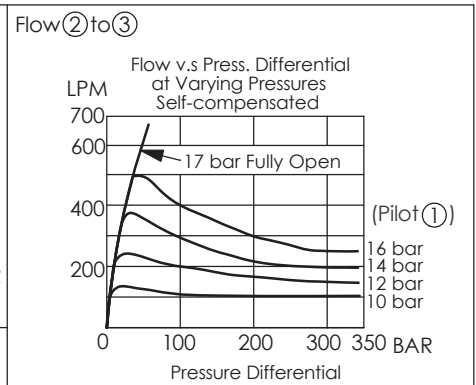
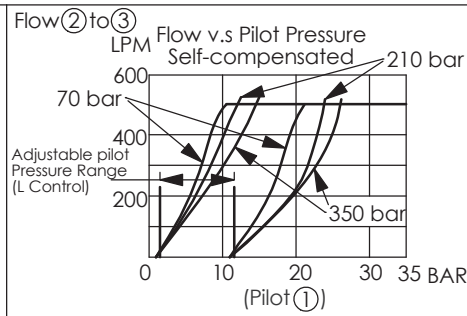
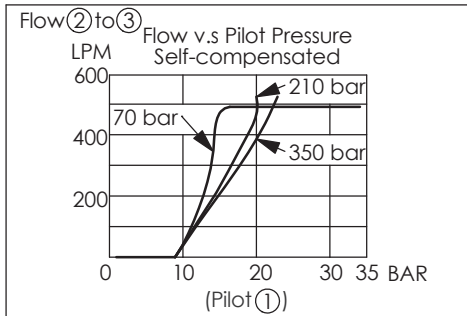
FLOW CONTROL VALVE

(2-Way, Pilot Shifted, Normally Closed, Proportional Throttle)



TECHNICAL DATA

Max. pressure:	350	bar
Rated flow:	240	l/min
Cavity-Tooling:	24A-4	
Installation torque:	465-500	Nm
Weight:	1.51	kg
Ports 1 and 4 should be limited to 35 bar		



X	OPERATION	
4C	4 Port, Normally Closed	
Y	MAX. FLOW	MIN. PILOT PRESSURE
B	240 LPM	10 bar

Z	OPTIONS	
L	Leakproof hex. socket screw. (The adjustment range is 1.4~13 bar) (7 bar Standard Setting)	
N	Non-adjustable (Minimum Pilot Pressure to Operate 10 bar)	

CENTRALA ELBLĄG

Ul. Rawska 19B
82-300 Elbląg

tel. /+48/ 55 625 51 00

fax /+48/ 55 625 51 01

Dział Handlowy

tel. /+48/ 55 625 51 51

elblag@hydropress.pl



www.hydropress.pl

ODDZIAŁ GDAŃSK

tel. /+48/ 55 625 51 21

fax /+48/ 55 625 51 22

ODDZIAŁ RUMIA

tel. /+48/ 58 679 34 15

fax /+48/ 55 625 51 25

ODDZIAŁ TYCHY

tel. /+48/ 32 787 52 88

fax /+48/ 55 625 51 38

ODDZIAŁ OLSZTYN

tel. /+48/ 89 532 01 05

fax /+48/ 89 715 21 42

ODDZIAŁ WARSZAWA

tel. /+48/ 22 468 86 97

fax /+48/ 55 625 51 32

BIURO WE WROCŁAWIU

tel. /+48/ 782 838 000

fax /+48/ 55 625 51 35

BIURO W KIELCACH

tel. /+48/ 885 995 501

fax /+48/ 55 625 51 01

BIURO W KRAKOWIE

tel. /+48/ 885 995 019

fax /+48/ 55 625 51 01

BIURO W OPOLU

tel. /+48/ 885 995 011

fax /+48/ 55 625 51 01

BIURO W BYDGOSZCZY

tel. /+48/ 790 222 771

fax /+48/ 55 625 51 01

BIURO W BIAŁYMSTOKU

tel. /+48/ 89 532 01 05

fax /+48/ 89 715 21 42

BIURO W ŁODZI

tel. /+48/ 609 221 421

fax /+48/ 89 715 21 42