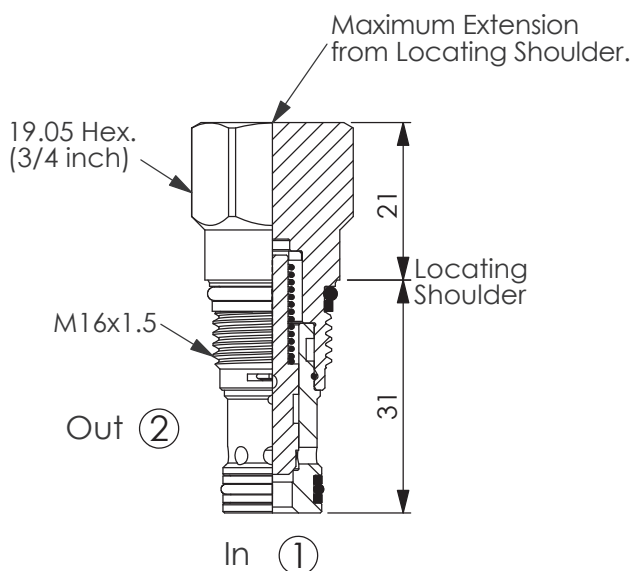




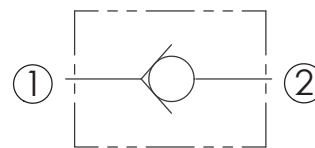
ZAWORY ZWROTNE 2-DROGOWE

CHECK VALVE

Ordering Code: **CV-162A-X-Y-Z**

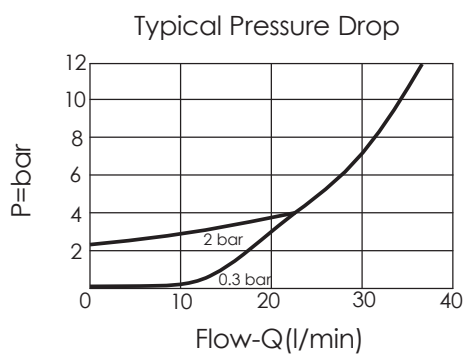


UNIT:mm



TECHNICAL DATA

Max. pressure:	350	bar
Rated flow:	40	l/min
Cavity-Tooling:	162A-2	
Installation torque:	27-33	Nm
Weight:	0.08	kg



X OPERATION

20 1 to 2 (Free Flow)

Y SPRINGS

Cracking pressure

03 0.3 bar

20 2.0 bar

50 5.0 bar

Z OPTION

N Non-adjustable

NP Non-adjustable
With stainless steel
external metal components
(Buna-N Seal)

Ordering Code: **CV-13A-X-Y-Z**

Control Option:
Maximum extension
from locating shoulder.
(L Control shown)

Maximum Extension
from Locating Shoulder.

22.2 Hex.
(7/8 inch)

M20x1.5

Out ②

In ①

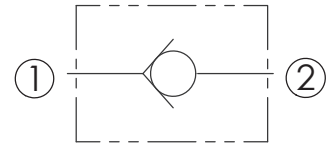
L=51
N=19

∅19

35.1

Locating
Shoulder

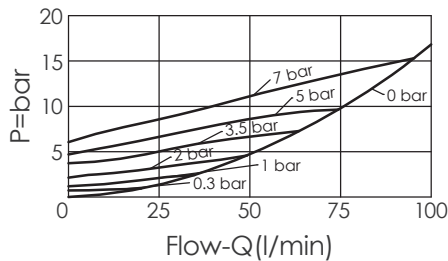
UNIT:mm



TECHNICAL DATA

Max. pressure:	350	bar
Rated flow:	80	l/min
Cavity-Tooling:	13A-2	
Installation torque:	40-50	Nm
Weight:	0.10 (Z:N,NP)	kg
	0.14 (Z:L)	kg

Typical Pressure Drop



Y

SPRINGS

Cracking pressure

00	0 bar (without spring)
015	0.15 bar
03	0.3 bar
10	1.0 bar
20	2.0 bar
35	3.5 bar
50	5.0 bar
70	7.0 bar

X

OPERATION

20 1 to 2 (Free Flow)

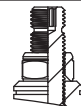
Z

OPTION

N Non-adjustable

NP Non-adjustable
With stainless steel
external metal components
(Buna-N Seal)

L Leakproof hex.
socket screw.



CHECK VALVE

Ordering Code: **CV-5A-X-Y-Z**

28.5 Hex. (1 1/8 inch)

1.00-14UNS-2A

Maximum Extension from Locating Shoulder.

17.5

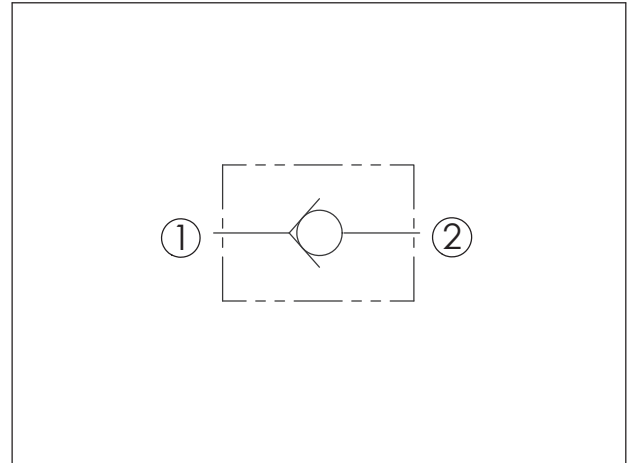
Locating Shoulder

41.1

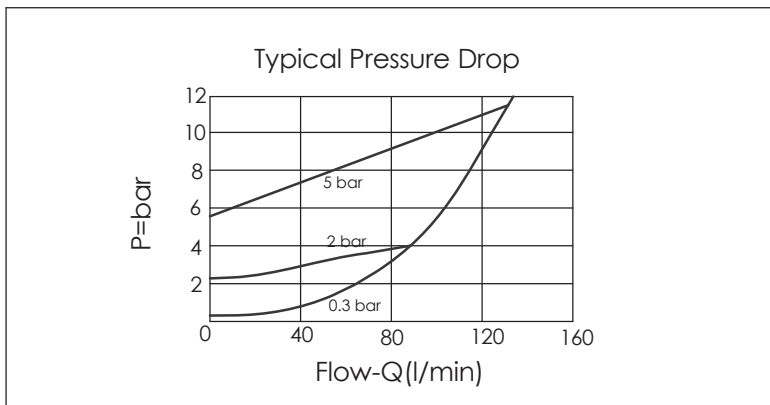
Out ②

In ①

UNIT:mm



TECHNICAL DATA		
Max. pressure:	350	bar
Rated flow:	160	l/min
Cavity-Tooling:	5A-2	
Installation torque:	60-70	Nm
Weight:	0.20	kg



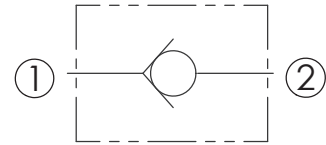
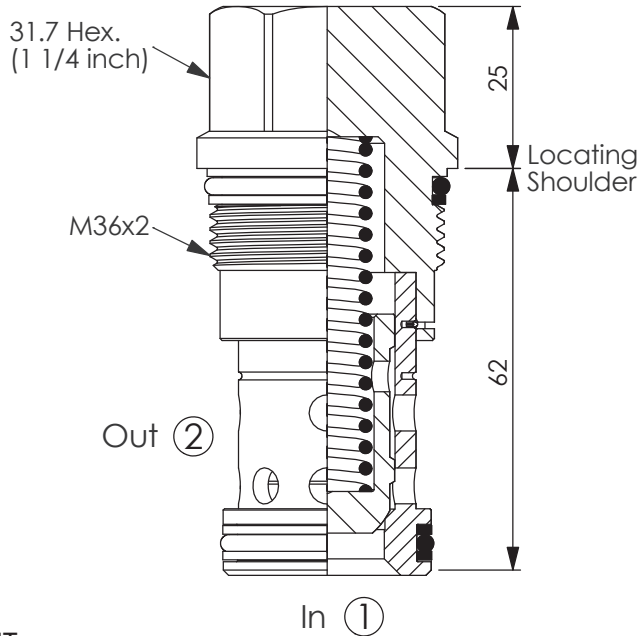
X	OPERATION	
20	1 to 2 (Free Flow)	

Y	SPRINGS	
	Cracking pressure	
015	0.15 bar	
03	0.3 bar	
10	1.0 bar	
20	2.0 bar	
35	3.5 bar	
50	5.0 bar	
70	7.0 bar	

Z	OPTION	
N	Non-adjustable	

CHECK VALVE

Ordering Code: **CV-16A-X-Y-Z**

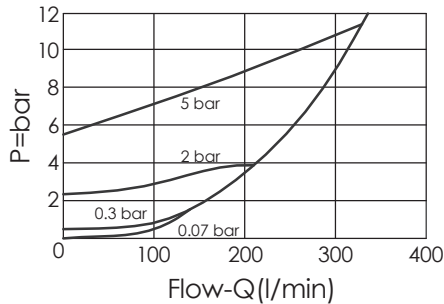


TECHNICAL DATA

Max. pressure:	350	bar
Rated flow:	320	l/min
Cavity-Tooling:	16A-2	
Installation torque:	200-215	Nm
Weight:	0.42	kg

UNIT:mm

Typical Pressure Drop

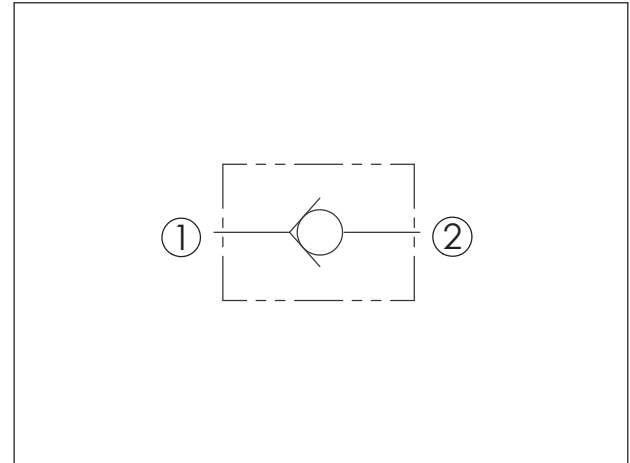
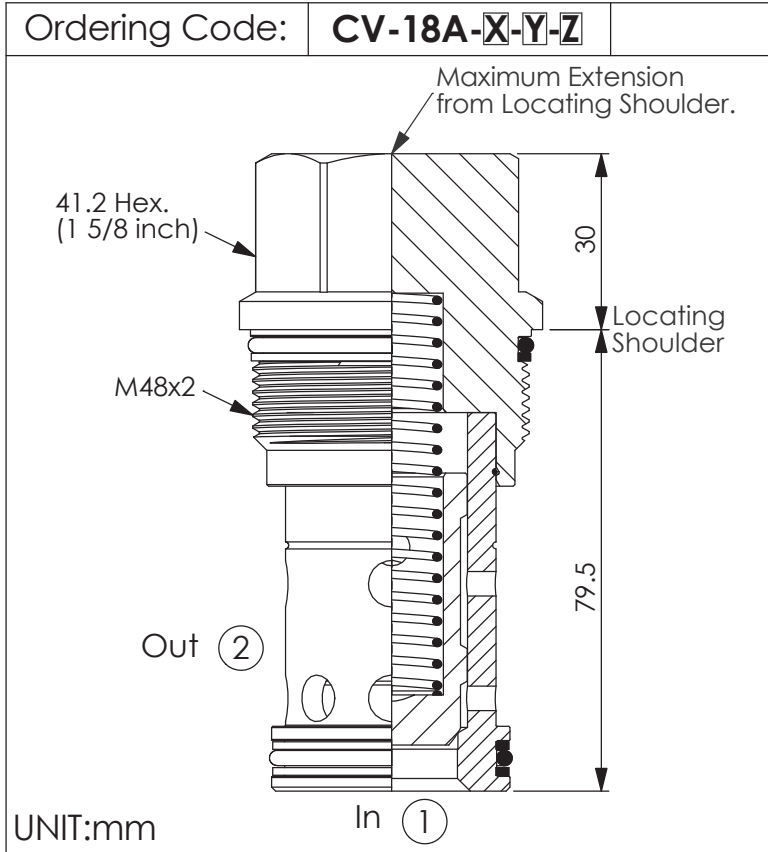


Y	SPRINGS	
	Cracking pressure	
007	0.07 bar	
015	0.15 bar	
01	0.1 bar	
03	0.3 bar	
10	1.0 bar	
20	2.0 bar	
35	3.5 bar	
50	5.0 bar	
70	7.0 bar	
105	10.5 bar	

X	OPERATION	
20	1 to 2 (Free Flow)	

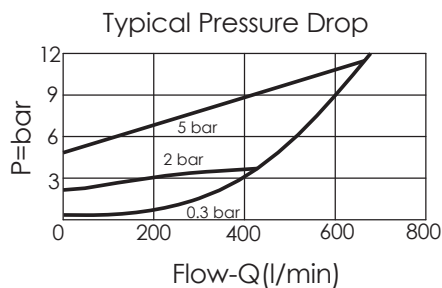
Z	OPTION	
N	Non-adjustable	

CHECK VALVE



TECHNICAL DATA

Max. pressure:	350	bar
Rated flow:	640	l/min
Cavity-Tooling:	18A-2	
Installation torque:	465-500	Nm
Weight:	0.95	kg



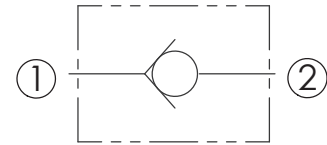
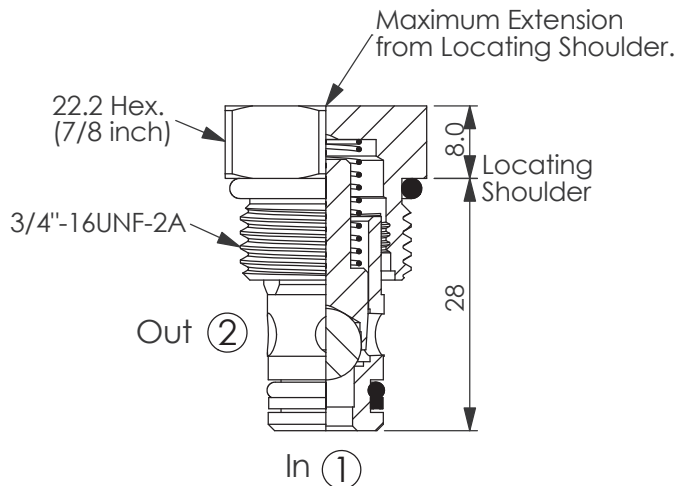
X	OPERATION	
20	1 to 2 (Free Flow)	

Y	SPRINGS	
	Cracking pressure	
015	0.15 bar	
01	0.1 bar	
03	0.3 bar	
10	1.0 bar	
20	2.0 bar	
35	3.5 bar	
50	5.0 bar	
70	7.0 bar	
105	10.5 bar	

Z	OPTION	
N	Non-adjustable	

CHECK VALVE

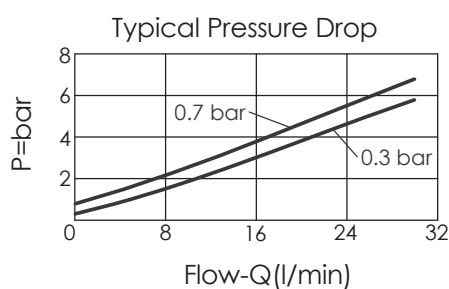
Ordering Code: **CV-08W-X-Y-Z**



TECHNICAL DATA

Max. pressure:	240	bar
Rated flow:	30	l/min
Cavity-Tooling:	08W-2	
Installation torque:	25-35	Nm
Weight:	0.05	kg

UNIT:mm



X OPERATION

20 1 to 2 (Free Flow)

Y SPRINGS

Cracking pressure

Y	Cracking pressure
03	0.3 bar
07	0.7 bar
17	1.7 bar
41	4.1 bar
69	6.9 bar
103	10.3 bar
138	13.8 bar
176	17.6 bar

Z OPTION

N Non-adjustable

CHECK VALVE

Ordering Code: **CV-10W-X-Y-Z**

25.4 Hex. (1 inch)

7/8"-14UNF-2A

Out ②

In ①

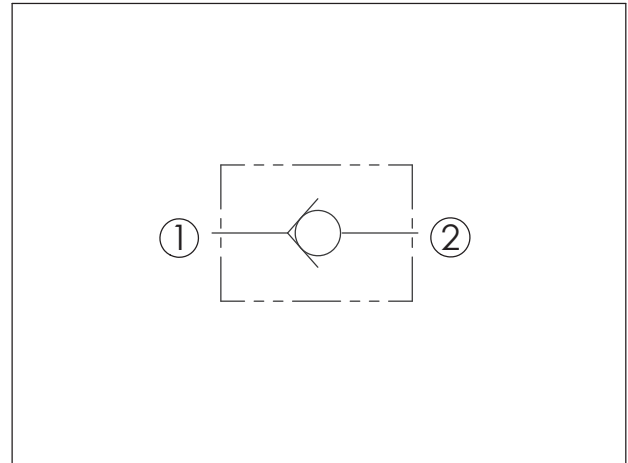
Maximum Extension from Locating Shoulder.

8.0

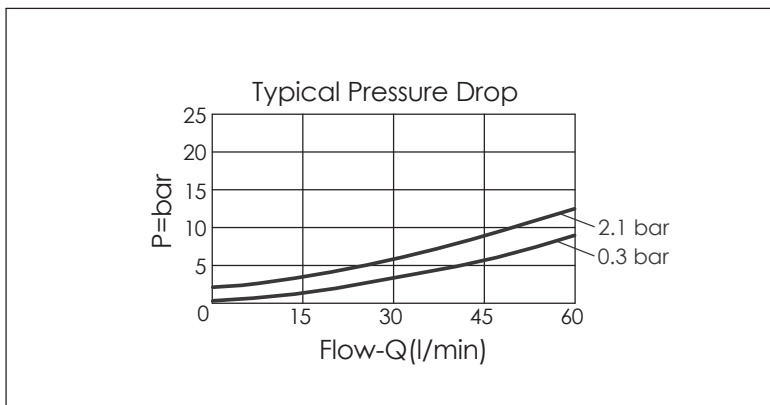
Locating Shoulder

32

UNIT:mm



TECHNICAL DATA		
Max. pressure:	240	bar
Rated flow:	60	l/min
Cavity-Tooling:	10W-2	
Installation torque:	35-45	Nm
Weight:	0.08	kg



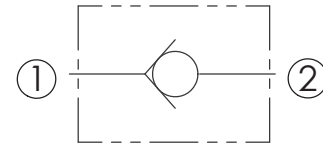
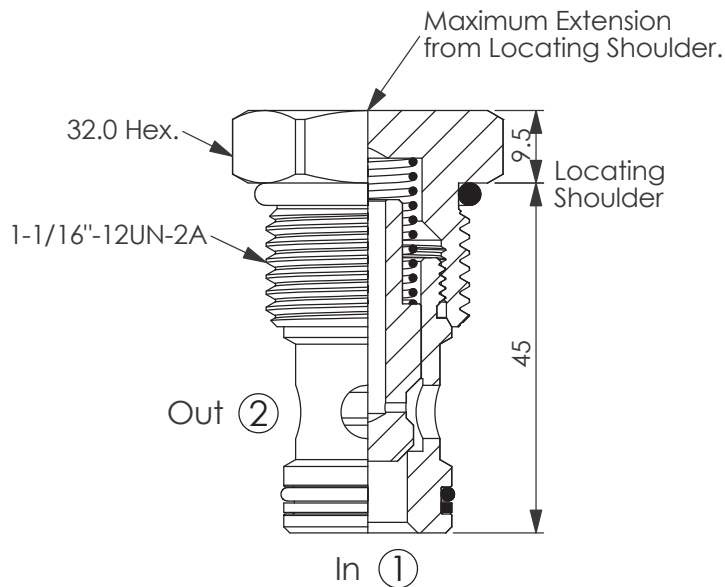
X	OPERATION	
20	1 to 2 (Free Flow)	

Y	SPRINGS	
	Cracking pressure	
03	0.3 bar	
07	0.7 bar	
17	1.7 bar	
21	2.1 bar	
41	4.1 bar	
69	6.9 bar	

Z	OPTION	
N	Non-adjustable	

CHECK VALVE

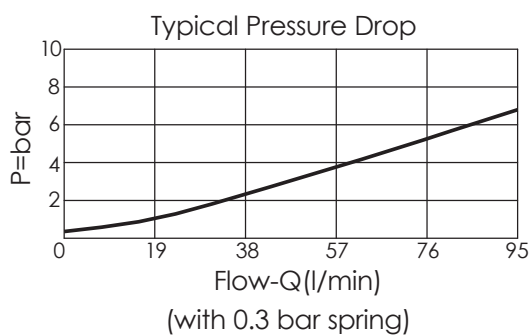
Ordering Code: **CV-12W-X-Y-Z**



TECHNICAL DATA

Max. pressure:	240	bar
Rated flow:	90	l/min
Cavity-Tooling:	12W-2	
Installation torque:	45-55	Nm
Weight:	0.17	kg

UNIT:mm



X OPERATION

20 1 to 2 (Free Flow)

Y SPRINGS

Cracking pressure

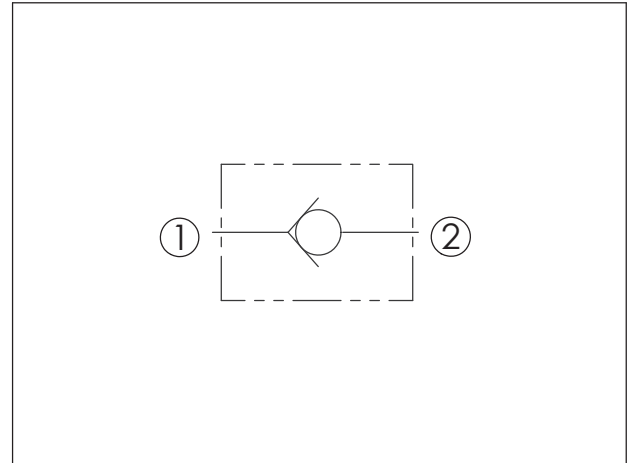
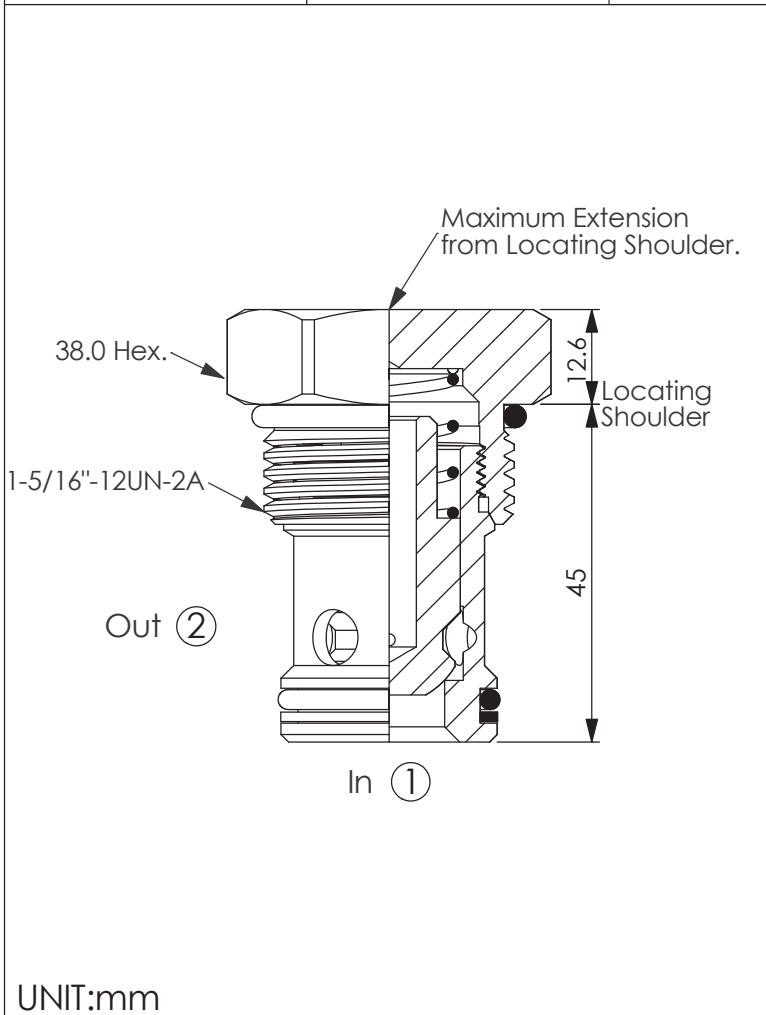
03	0.3 bar
17	1.7 bar
21	2.1 bar
41	4.1 bar
69	6.9 bar

Z OPTION

N Non-adjustable

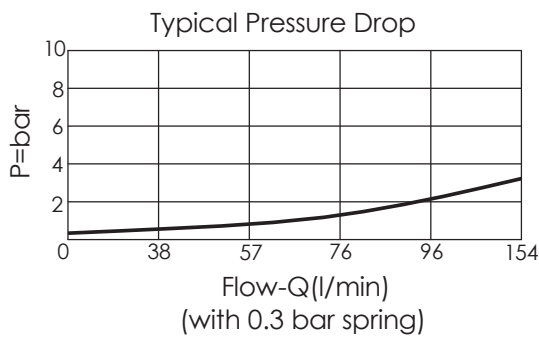
CHECK VALVE

Ordering Code: **CV-16W-X-Y-Z**



TECHNICAL DATA

Max. pressure:	240	bar
Rated flow:	150	l/min
Cavity-Tooling:	16W-2	
Installation torque:	60-70	Nm
Weight:	0.27	kg



X

OPERATION

20

1 to 2 (Free Flow)

Y

SPRINGS

Cracking pressure

03

0.3 bar

17

1.7 bar

41

4.1 bar

Z

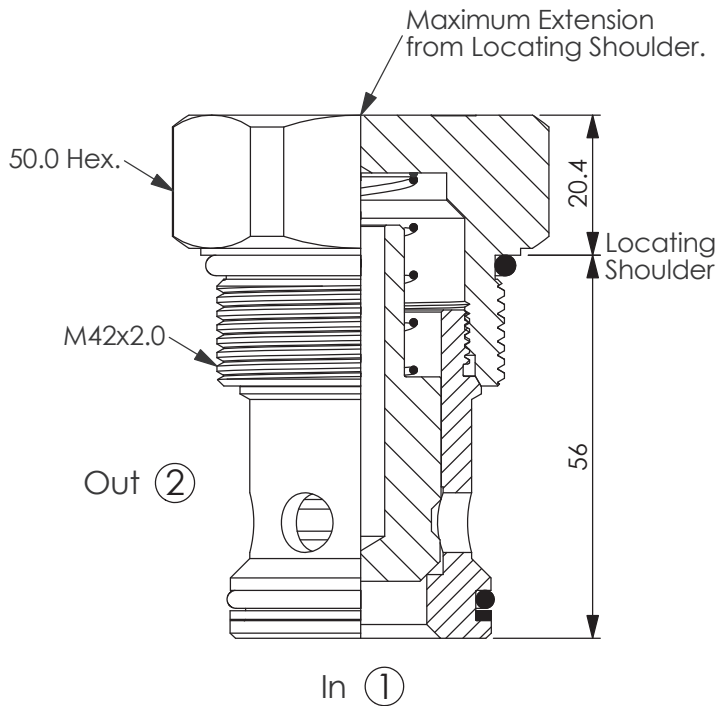
OPTION

N

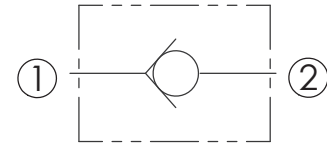
Non-adjustable

CHECK VALVE

Ordering Code: **CV-42W-X-Y-Z**

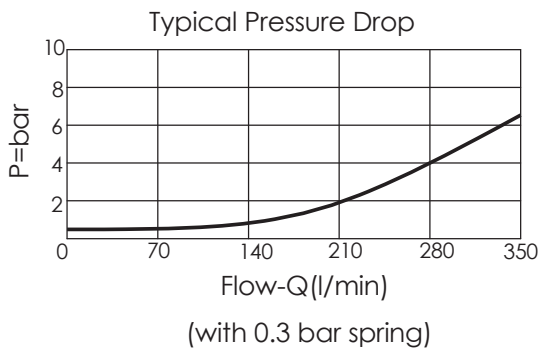


UNIT:mm



TECHNICAL DATA

Max. pressure:	240	bar
Rated flow:	350	l/min
Cavity-Tooling:	42W-2	
Installation torque:	110-130	Nm
Weight:	0.6	kg



X OPERATION

20 1 to 2 (Free Flow)

Y SPRINGS

Cracking pressure

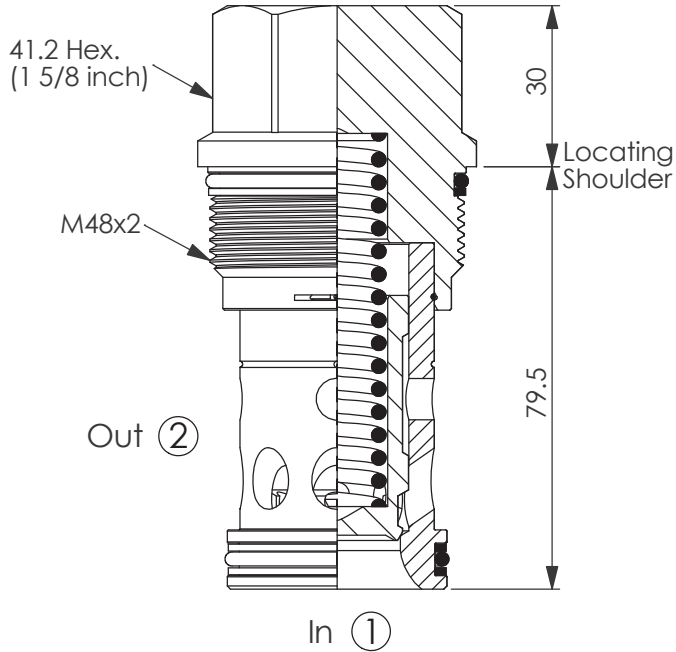
03	0.3 bar
17	1.7 bar
21	2.1 bar
41	4.1 bar

Z OPTION

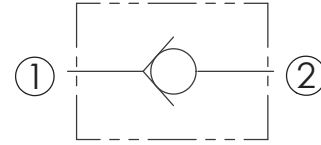
N Non-adjustable

CHECK VALVE

Ordering Code: **CV-18AB-X-Y-Z**

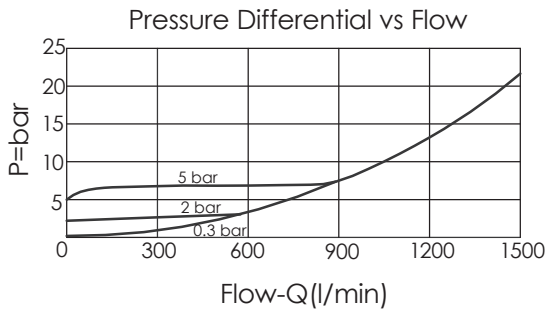


UNIT:mm



TECHNICAL DATA

Max. pressure:	350	bar
Rated flow:	900	l/min
Cavity-Tooling:	18AB-2	
Installation torque:	465-500	Nm
Weight:	0.9	kg



X

OPERATION

20

1 to 2 (Free Flow)

Y

SPRINGS

Cracking pressure

015

0.15 bar

01

0.1 bar

03

0.3 bar

10

1.0 bar

20

2.0 bar

35

3.5 bar

50

5.0 bar

70

7.0 bar

105

10.5 bar

Z

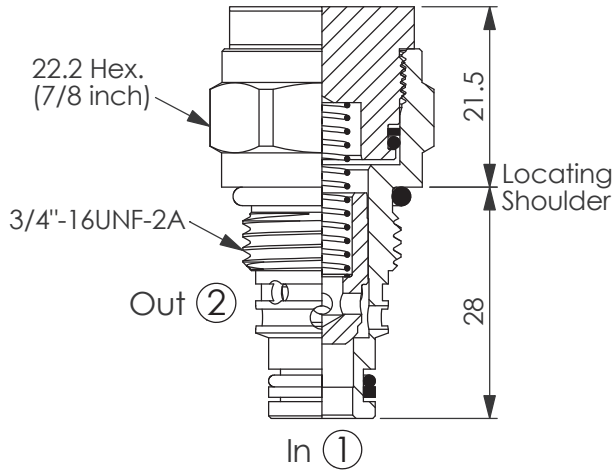
OPTION

N

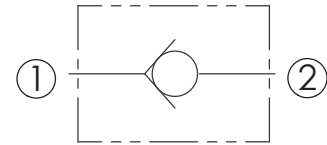
Non-adjustable

CHECK VALVE

Ordering Code: **CV-08W-X-Y-Z**

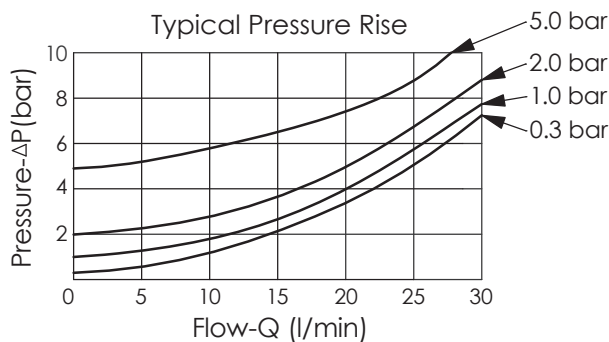


UNIT:mm



TECHNICAL DATA

Rated pressure:	350	bar
(Max. pressure:	420	bar)
Rated flow:	30	l/min
Cavity-Tooling:	08W-2	
Installation torque:	25-35	Nm
Weight:	0.10	kg



X OPERATION

22 1 to 2 (Free Flow)

Y SPRINGS

Cracking pressure

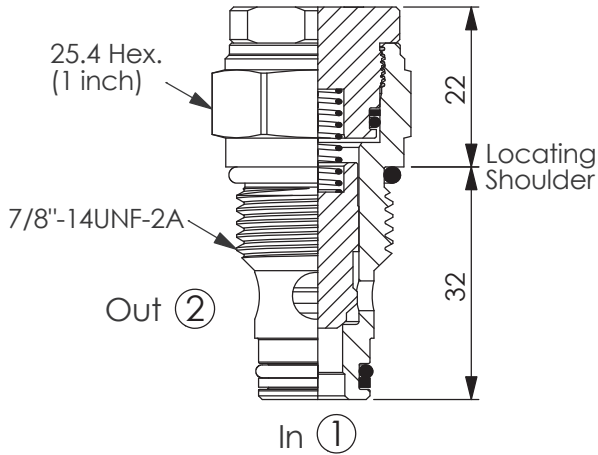
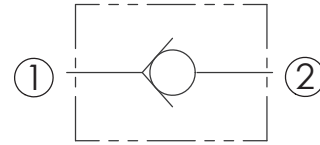
03	0.3 bar
10	1.0 bar
20	2.0 bar
50	5.0 bar

Z OPTION

N Non-adjustable

CHECK VALVE

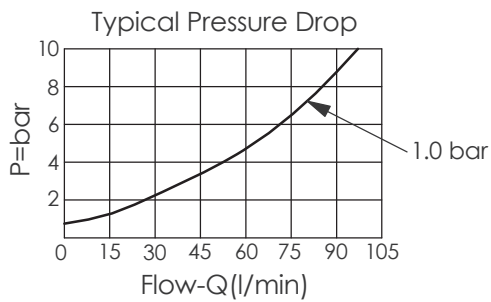
Ordering Code: **CV-10W-X-Y-Z**



TECHNICAL DATA

Rated pressure:	350	bar
(Max. pressure:	420	bar)
Rated flow:	60	l/min
Cavity-Tooling:	10W-2	
Installation torque:	35-45	Nm
Weight:	0.13	kg

UNIT:mm



X OPERATION

22 1 to 2 (Free Flow)

Y SPRINGS

Cracking pressure

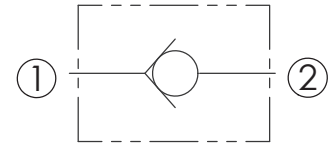
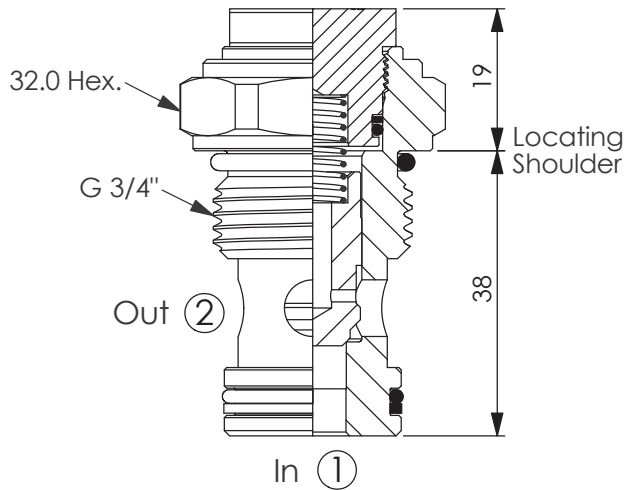
03	0.3 bar
10	1.0 bar
20	2.0 bar
50	5.0 bar

Z OPTION

N Non-adjustable

CHECK VALVE

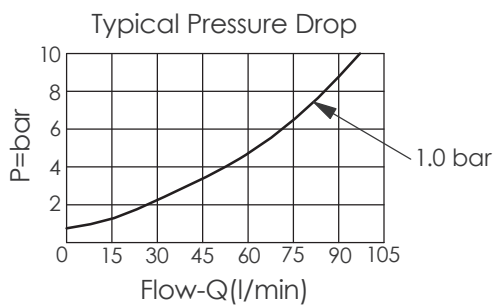
Ordering Code: **CV-17E-X-Y-Z**



TECHNICAL DATA

Rated pressure:	350	bar
(Max. pressure:	420	bar)
Rated flow:	60	l/min
Cavity-Tooling:	17E-2	
Installation torque:	45-55	Nm
Weight:	0.19	kg

UNIT:mm



X OPERATION

22 1 to 2 (Free Flow)

Y SPRINGS

Cracking pressure

03 0.3 bar

10 1.0 bar

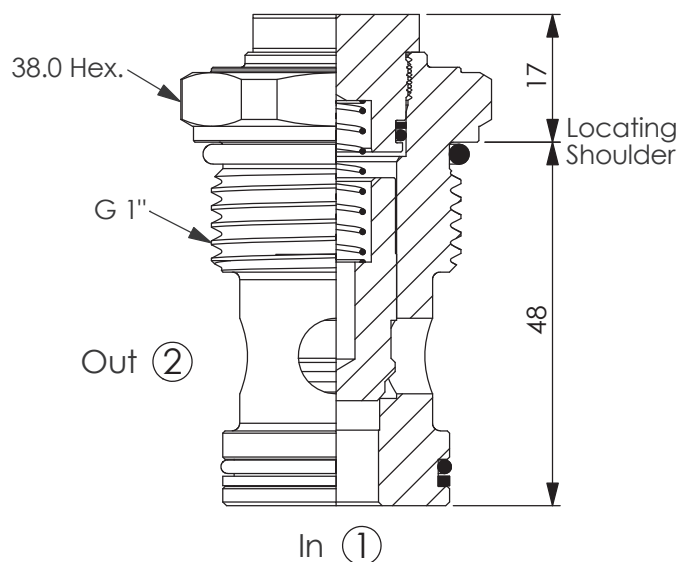
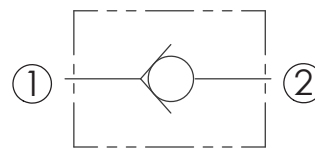
50 5.0 bar

Z OPTION

N Non-adjustable

CHECK VALVE

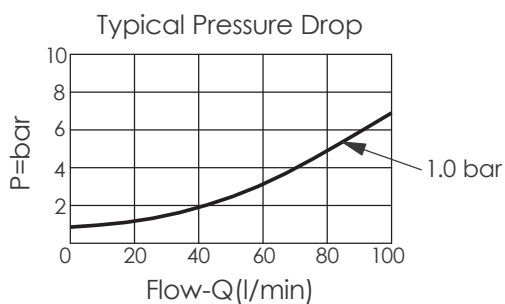
Ordering Code: **CV-21E-X-Y-Z**



UNIT:mm

TECHNICAL DATA

Rated pressure:	350	bar
(Max. pressure:	420	bar)
Rated flow:	100	l/min
Cavity-Tooling:	21E-2	
Installation torque:	70-90	Nm
Weight:	0.31	kg



X

OPERATION

22

1 to 2 (Free Flow)

Y

SPRINGS

Cracking pressure

03

0.3 bar

10

1.0 bar

50

5.0 bar

Z

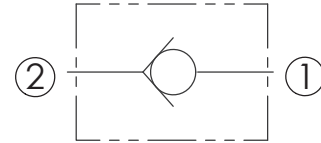
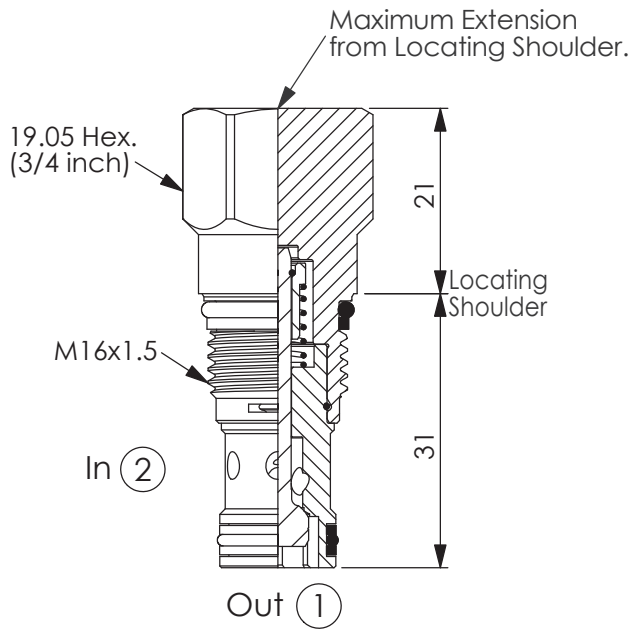
OPTION

N

Non-adjustable

CHECK VALVE (Free flow side to nose check valve)

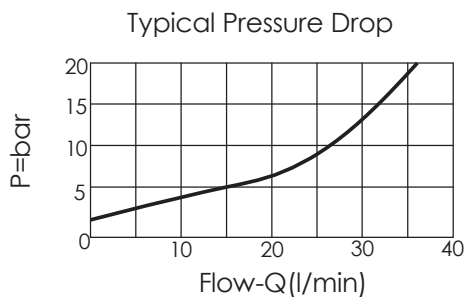
Ordering Code: **CV-162A-X-Y-Z**



TECHNICAL DATA

Max. pressure:	350	bar
Rated flow:	30	l/min
Cavity-Tooling:	162A-2	
Installation torque:	27-33	Nm
Weight:	0.08	kg

UNIT:mm



X OPERATION

21 2 to 1 (Free Flow)

Y SPRINGS

Cracking pressure

03	0.3 bar
20	2.0 bar
50	5.0 bar

Z OPTION

N	Non-adjustable
NP	Non-adjustable With stainless steel external metal components (Buna-N Seal)

CHECK VALVE (Free flow side to nose check valve)

Ordering Code: **CV-13A-X-Y-Z**

22.2 Hex.
(7/8 inch)

Maximum Extension
from Locating Shoulder.

19

Locating
Shoulder

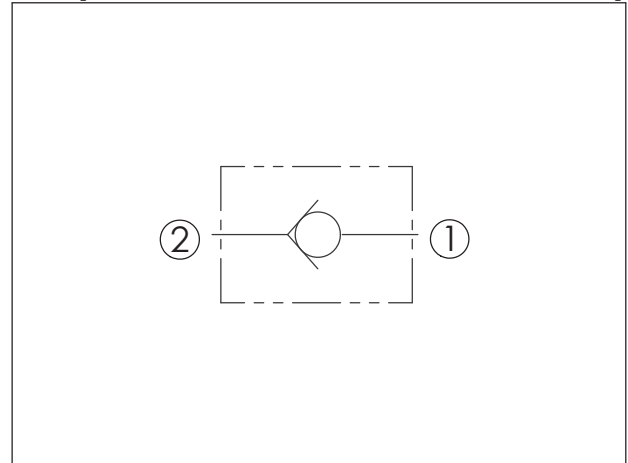
M20x1.5

In ②

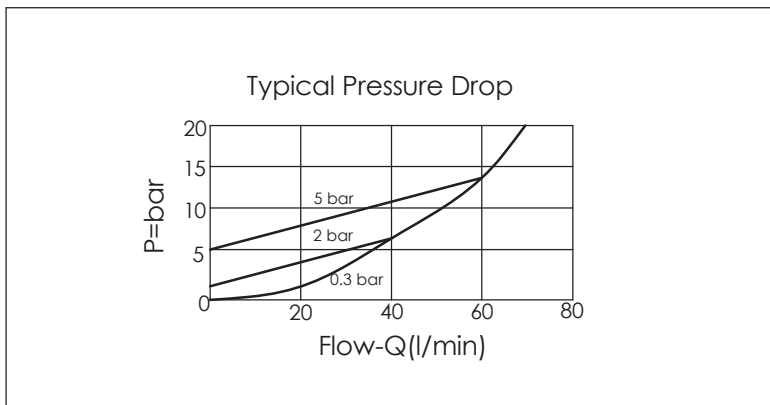
35.1

Out ①

UNIT:mm



TECHNICAL DATA		
Max. pressure:	350	bar
Rated flow:	60	l/min
Cavity-Tooling:	13A-2	
Installation torque:	40-50	Nm
Weight:	0.10	kg



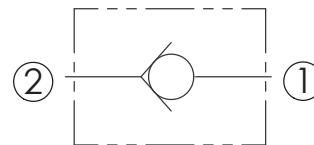
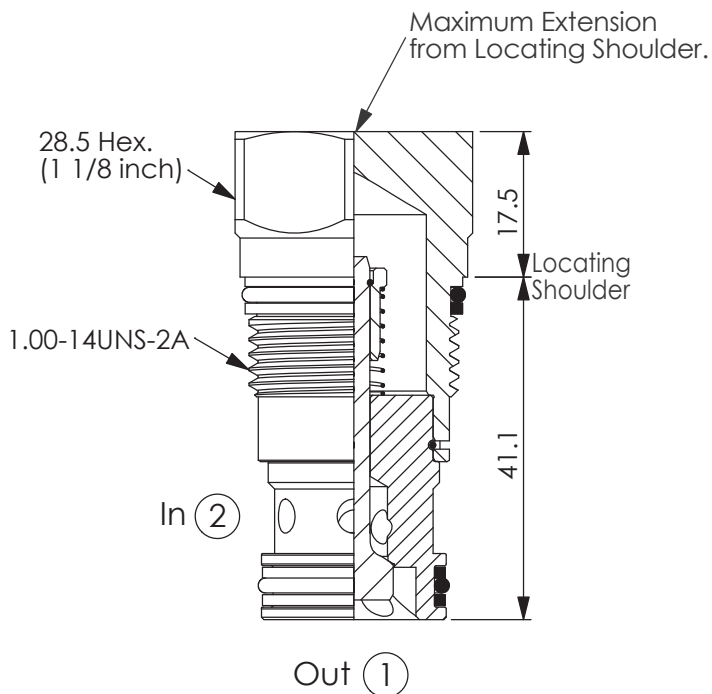
X	OPERATION	
21	2 to 1 (Free Flow)	

Y	SPRINGS	
	Cracking pressure	
01	0.1 bar	
03	0.3 bar	
10	1.0 bar	
20	2.0 bar	
35	3.5 bar	
50	5.0 bar	
70	7.0 bar	

Z	OPTION	
N	Non-adjustable	
NP	Non-adjustable With stainless steel external metal components (Buna-N Seal)	

CHECK VALVE (Free flow side to nose check valve)

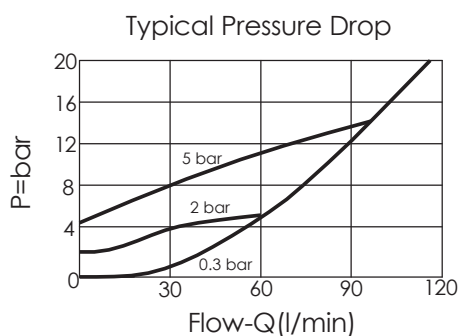
Ordering Code: **CV-5A-X-Y-Z**



TECHNICAL DATA

Max. pressure:	350	bar
Rated flow:	120	l/min
Cavity-Tooling:	5A-2	
Installation torque:	60-70	Nm
Weight:	0.20	kg

UNIT:mm



X OPERATION

21 2 to 1 (Free Flow)

Y SPRINGS

Cracking pressure

015	0.15 bar	
03	0.3 bar	
10	1.0 bar	
20	2.0 bar	
35	3.5 bar	
50	5.0 bar	
70	7.0 bar	

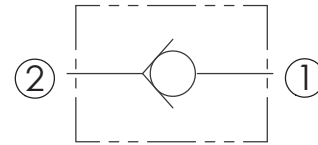
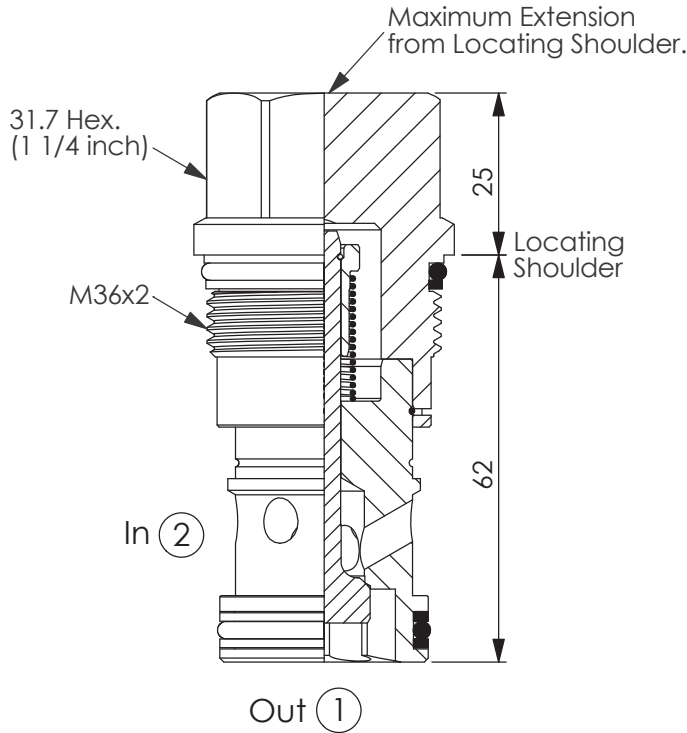
Z OPTION

N Non-adjustable

CHECK VALVE

(Free flow side to nose check valve)

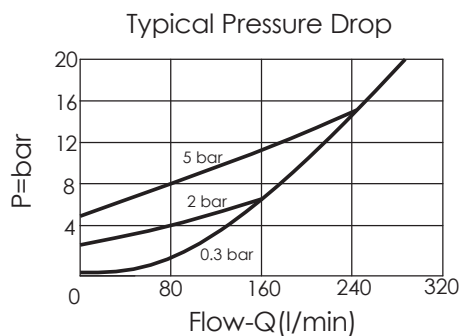
Ordering Code: **CV-16A-X-Y-Z**



TECHNICAL DATA

Max. pressure:	350	bar
Rated flow:	240	l/min
Cavity-Tooling:	16A-2	
Installation torque:	200-215	Nm
Weight:	0.46	kg

UNIT:mm



X

OPERATION

21

2 to 1 (Free Flow)

Y

SPRINGS

Cracking pressure

015

0.15 bar

03

0.3 bar

10

1.0 bar

20

2.0 bar

35

3.5 bar

50

5.0 bar

70

7.0 bar

Z

OPTION

N

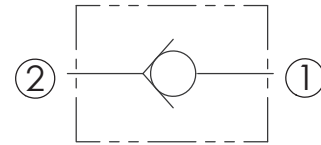
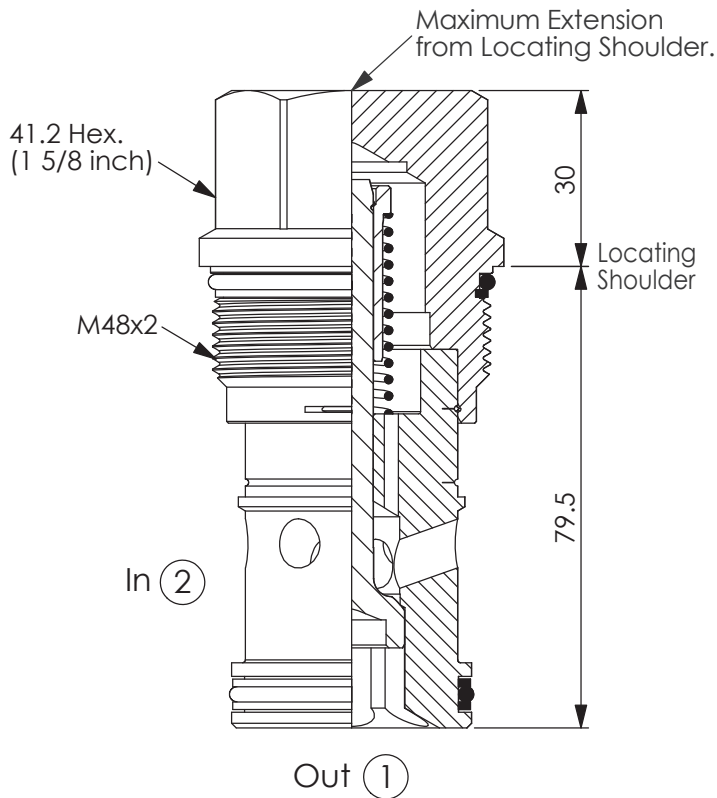
Non-adjustable

NP

Non-adjustable
With stainless steel
external metal components
(Buna-N Seal)

CHECK VALVE (Free flow side to nose check valve)

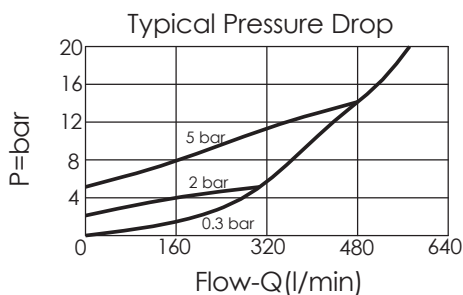
Ordering Code: **CV-18A-X-Y-Z**



TECHNICAL DATA

Max. pressure:	350	bar
Rated flow:	480	l/min
Cavity-Tooling:	18A-2	
Installation torque:	465-500	Nm
Weight:	0.93	kg

UNIT:mm



X OPERATION

21 2 to 1 (Free Flow)

Y SPRINGS

Cracking pressure

015	0.15 bar
03	0.3 bar
10	1.0 bar
20	2.0 bar
35	3.5 bar
50	5.0 bar
70	7.0 bar

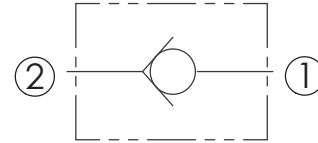
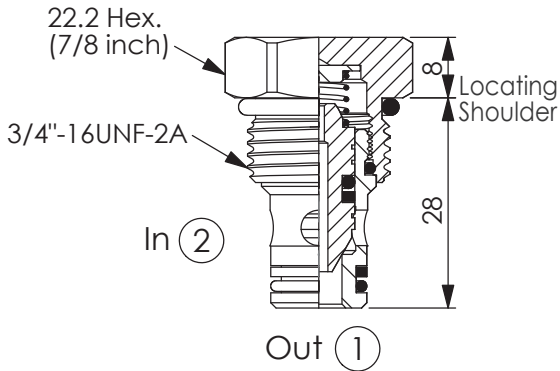
Z OPTION

N	Non-adjustable
NP	Non-adjustable With stainless steel external metal components (Buna-N Seal)

CHECK VALVE

(Free flow side to nose check valve)

Ordering Code: **CV-08W-X-Y-Z**



TECHNICAL DATA

Max. pressure: 240 bar

Rated flow: 30 l/min

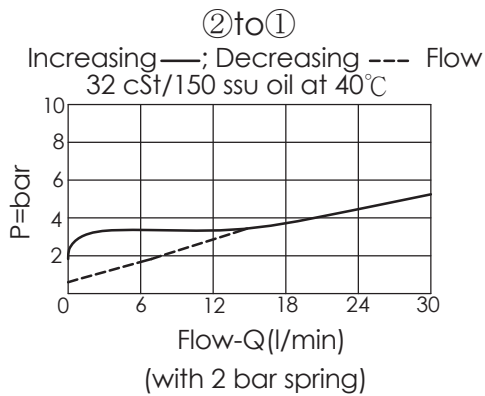
Cavity-Tooling: 08W-2

Installation torque: 25-35 Nm

Weight: 0.05 kg

Installation Leakage:
5 drops/minute max. at 240bar

UNIT:mm



X

OPERATION

2A

2 to 1 (Free Flow)
(with Sealed)

Y

SPRINGS

Cracking pressure

20 2.0 bar

50 5.0 bar

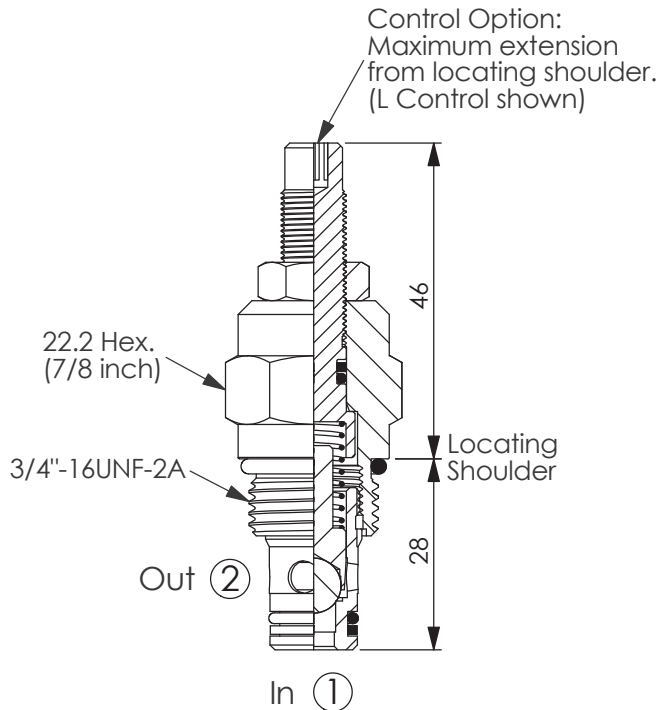
Z

OPTION

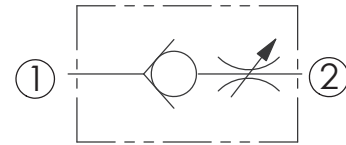
N

Non-adjustable

Ordering Code: **CV-08W-X-Y-Z**



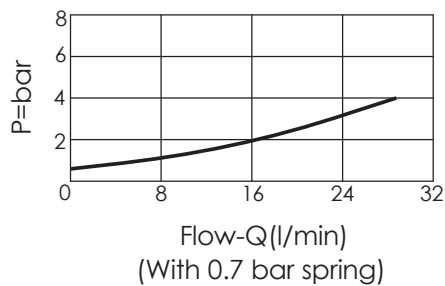
UNIT:mm



TECHNICAL DATA

Max. pressure:	240	bar
Rated flow:	30	l/min
Cavity-Tooling:	08W-2	
Installation torque:	25-35	Nm
Weight:	0.11	kg

Typical Pressure Drop



X OPERATION

20 1 to 2 (Free Flow)

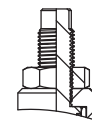
Y SPRINGS

Cracking pressure

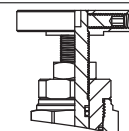
03	0.3 bar	
07	0.7 bar	
17	1.7 bar	
41	4.1 bar	
69	6.9 bar	
103	10.3 bar	
138	13.8 bar	
176	17.6 bar	

Z OPTIONS

L Leakproof hex. socket screw.

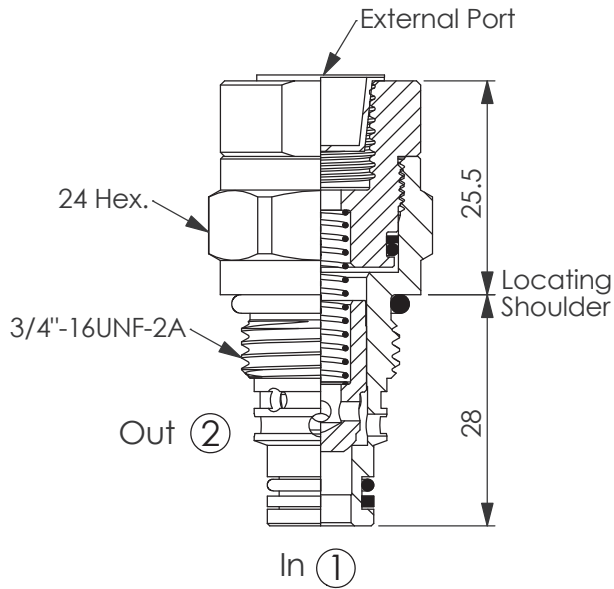


E Handknob and locknut.

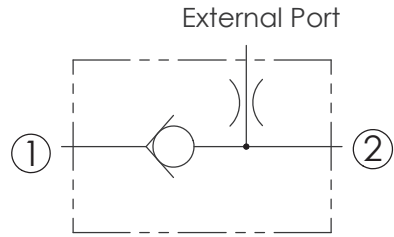


CHECK VALVE (With External Port)

Ordering Code: **CV-08W-X-Y-Z**

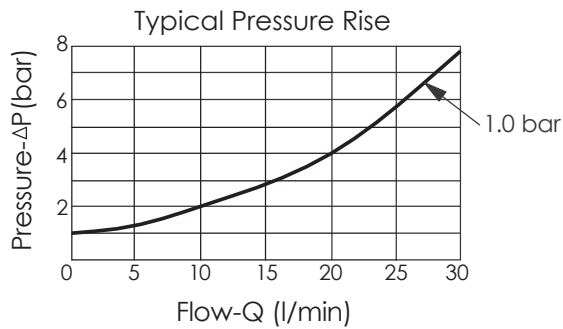


UNIT:mm



TECHNICAL DATA

Rated pressure:	350	bar
(Max. pressure:	420	bar)
Rated flow:	30	l/min
Cavity-Tooling:	08W-2	
Installation torque:	25-35	Nm
Weight:	0.10	kg



X OPERATION

22 1 to 2 (Free Flow)

Y SPRINGS

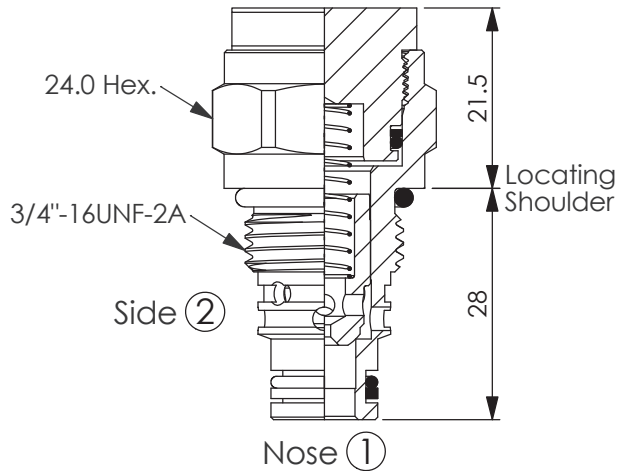
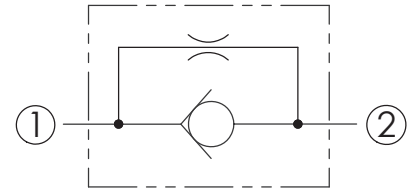
Cracking pressure

03	0.3 bar
10	1.0 bar
20	2.0 bar
50	5.0 bar

Z OPTION(External Port)

G02 G 1/4"

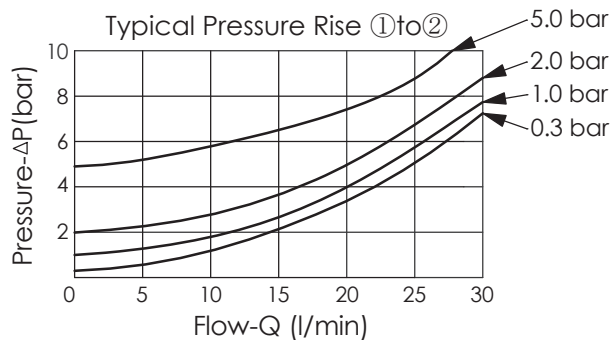
Ordering Code: **CV-08W-22-Y-N-Z**



UNIT:mm

TECHNICAL DATA

Rated pressure:	350	bar
(Max. pressure:	420	bar)
Rated flow:	30	l/min
Cavity-Tooling:	08W-2	
Installation torque:	25-35	Nm
Weight:	0.10	kg

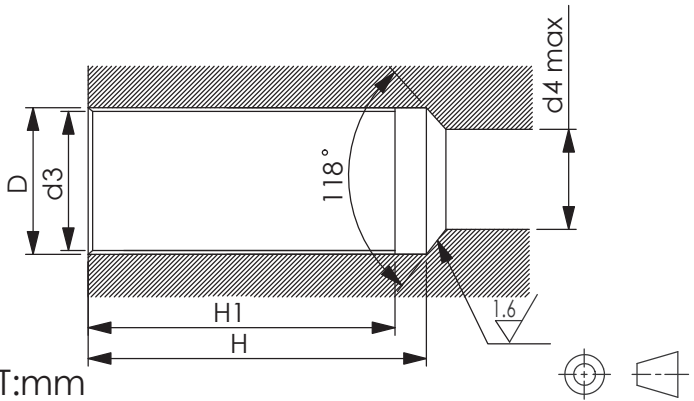
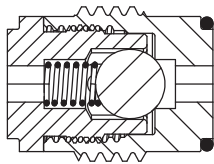
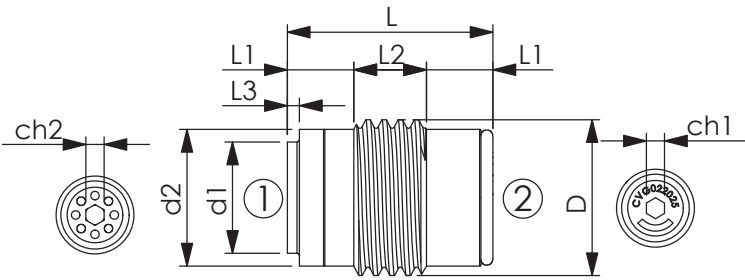


Y	SPRINGS	
	Cracking pressure	
03	0.3 bar	
10	1.0 bar	
20	2.0 bar	
50	5.0 bar	

Z	ORIFICE DIAMETER (mm)			
05	0.5		15	1.5
06	0.6		19	1.9
07	0.7		20	2.0
08	0.8			
09	0.9			
10	1.0			
12	1.2			
13	1.3			

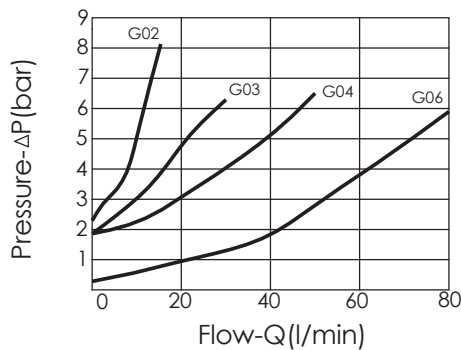
CHECK VALVE (Insert - Type Check Valves)

Ordering Code: **CV-X-Y-Z**



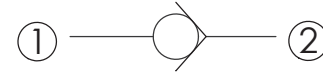
UNIT:mm

X=	D	L	L1	L2	L3	H	H1	ch1	ch2	d1	d2	d3	d4
G02	G 1/4"	17	5.5	6	1	28	25	3	3	9.2	11.3	11.8	8
G03	G 3/8"	18.5	5.5	7.5	1.8	30	27	4	3	11	14.8	15.2	9
G04	G 1/2"	22.5	6.5	9.5	1.8	36	32	6	5	14.2	18.5	19	12
G06	G 3/4"	28.5	7	14.5	2.7	42	37	8	8	19	24.1	24.5	17



Y	OPERATION
20	Standard Type

O-ring can be changed to the other side, opposite direction application is possible.



TECHNICAL DATA

Max. pressure: 350 bar

X=	Weight kg	Q MAX l/min	TIGHTENING TORQUE Cartridge Nm
G02	0.015	15	6
G03	0.025	30	6
G04	0.040	50	10
G06	0.070	80	20

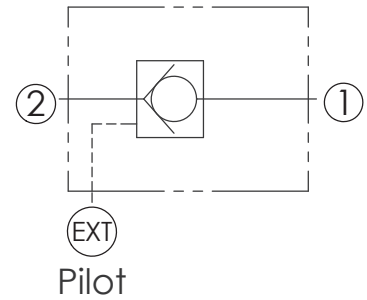
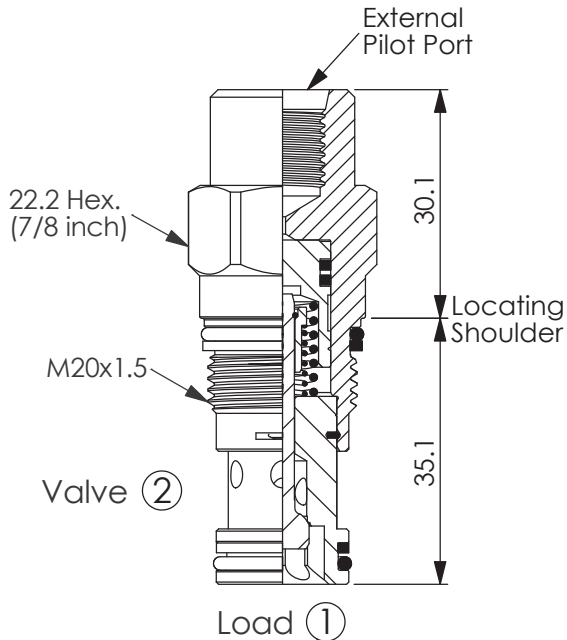
X OPERATION

G02	G 1/4"
G03	G 3/8"
G04	G 1/2"
G06	G 3/4"

Z CRACKING PRESSURE

02	0.2 bar Only Supply X= G04 and G06
05	0.5 bar
18	1.8 bar Only Supply X= G03 and G04 Option for G06
25	2.5 bar Only Supply X= G02

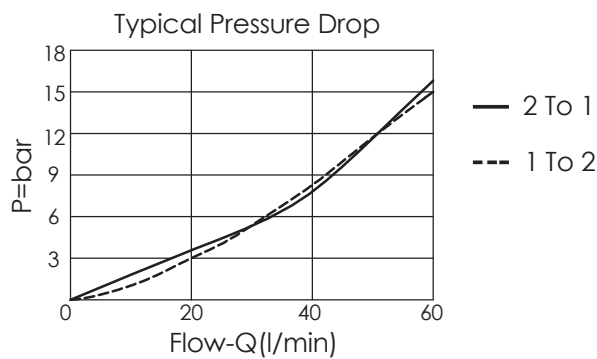
Ordering Code: **CO-13A-X-Y-Z**



TECHNICAL DATA

Max. pressure:	350	bar
Rated flow:	60	l/min
Cavity-Tooling:	13A-2	
Installation torque:	40-50	Nm
Weight:	0.12	kg

UNIT:mm



X OPERATION

20 2 to 1 (Free Flow)
Sealed Pilot Piston

Y SPRINGS

Cracking pressure

03	0.3 bar
20	2.0 bar
50	5.0 bar
70	7.0 bar

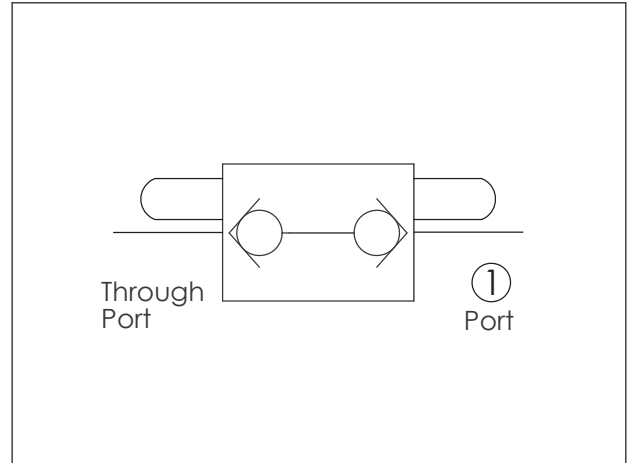
Z OPTION (External Ports)

G02	External G1/4" Port
S04	External SAE-4 Port (7/16"-20UNF-2B)

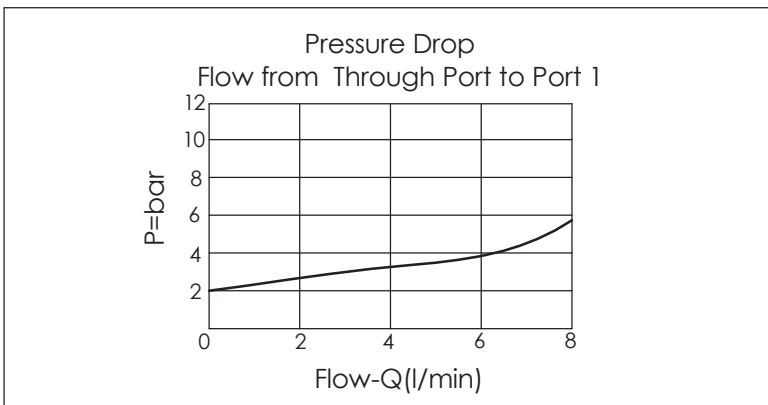
CHECK VALVE (Mechanically-operated, back-to-back check valve) (Phaser Check - Double End Actuation)

Ordering Code: **CD-162AP-X-Y-Z**

UNIT:mm



TECHNICAL DATA	
Max. operating pressure:	350 bar
Rated flow:	4.7 l/min
Cavity-Tooling:	162AP-2
Installation torque:	27-33 Nm
Weight:	0.03 kg
Internal Leakage:	0.07cc/minute (1 drop/minute) max.at 350 bar

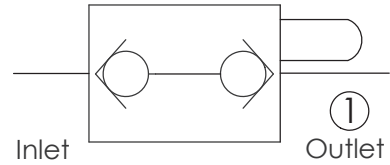
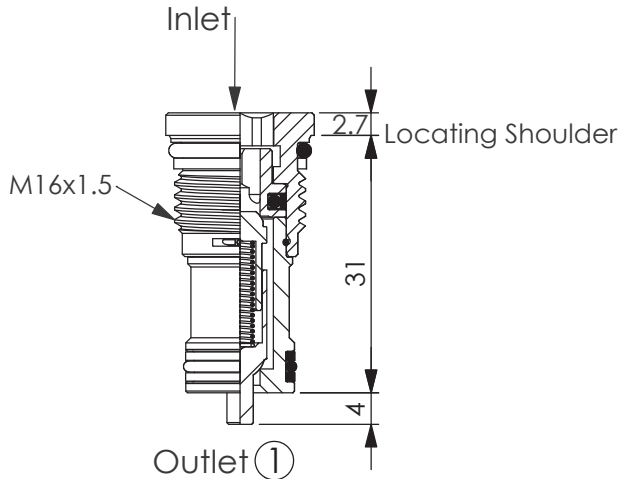


X	CONTROL	
2D	Phaser Check- Double End Actuation	

Y	SPRINGS	
	Cracking pressure	
20	2.0 bar	

Z	OPTION	
M	Standard	

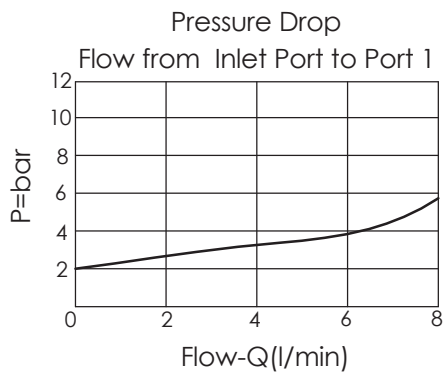
Ordering Code: **CD-162AP-X-Y-Z**



TECHNICAL DATA

Max. operating pressure:	350	bar
Rated flow:	4.7	l/min
Cavity-Tooling:	162AP-2	
Installation torque:	27-33	Nm
Weight:	0.03	kg
Internal Leakage:	0.07cc/minute (1 drop/minute) max.at 350 bar	

UNIT:mm



X CONTROL

2S Phaser Check - Single End Actuation

Y SPRINGS

Cracking pressure

20 2.0 bar

Z OPTION

M Standard

CENTRALA ELBLĄG

Ul. Rawska 19B
82-300 Elbląg

tel. /+48/ 55 625 51 00

fax /+48/ 55 625 51 01

Dział Handlowy

tel. /+48/ 55 625 51 51

elblag@hydropress.pl



www.hydropress.pl

ODDZIAŁ GDAŃSK

tel. /+48/ 55 625 51 21

fax /+48/ 55 625 51 22

ODDZIAŁ RUMIA

tel. /+48/ 58 679 34 15

fax /+48/ 55 625 51 25

ODDZIAŁ TYCHY

tel. /+48/ 32 787 52 88

fax /+48/ 55 625 51 38

ODDZIAŁ OLSZTYN

tel. /+48/ 89 532 01 05

fax /+48/ 89 715 21 42

ODDZIAŁ WARSZAWA

tel. /+48/ 22 468 86 97

fax /+48/ 55 625 51 32

BIURO WE WROCŁAWIU

tel. /+48/ 782 838 000

fax /+48/ 55 625 51 35

BIURO W KIELCACH

tel. /+48/ 885 995 501

fax /+48/ 55 625 51 01

BIURO W KRAKOWIE

tel. /+48/ 885 995 019

fax /+48/ 55 625 51 01

BIURO W OPOLU

tel. /+48/ 885 995 011

fax /+48/ 55 625 51 01

BIURO W BYDGOSZCZY

tel. /+48/ 790 222 771

fax /+48/ 55 625 51 01

BIURO W BIAŁYMSTOKU

tel. /+48/ 89 532 01 05

fax /+48/ 89 715 21 42

BIURO W ŁODZI

tel. /+48/ 609 221 421

fax /+48/ 89 715 21 42