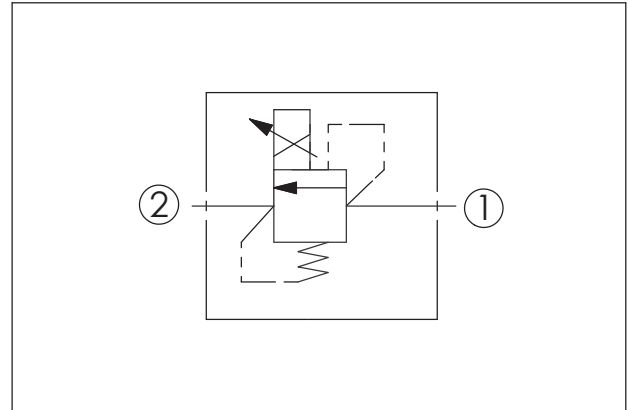
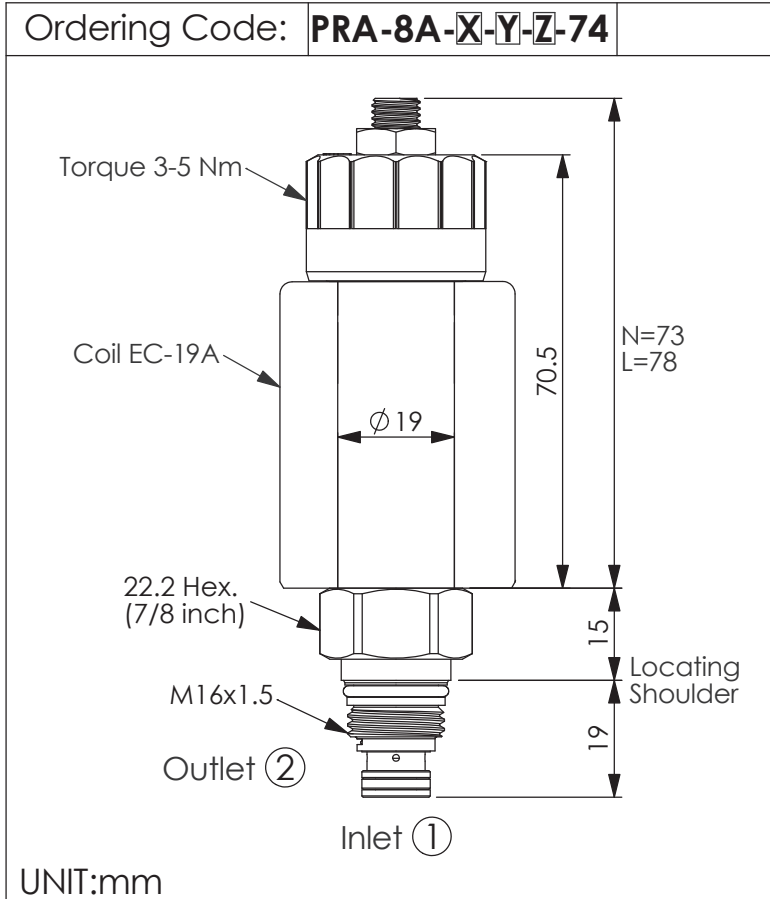




ZAWORY PROPORCJONALNE STEROWANE PILOTEM

PILOT CONTROL VALVE (Electro-Proportional, Relief-Inverse Function)



TECHNICAL DATA

Max. Operating pressure:	350	bar
Rated flow:	1	l/min
Cavity-Tooling:	8A-2	
Installation torque:	27-33	Nm
Weight:	0.20 kg	(Without Coil)

Coils must be ordered separately

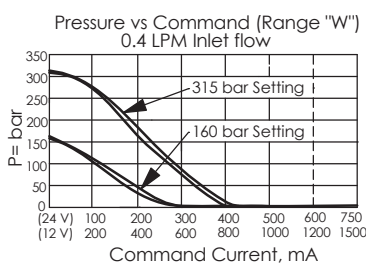
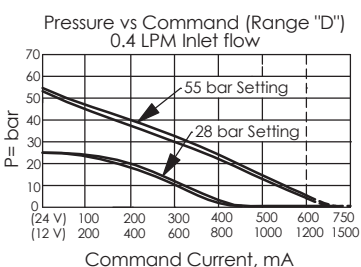
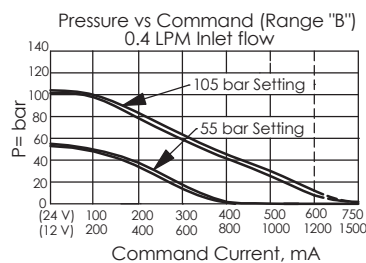
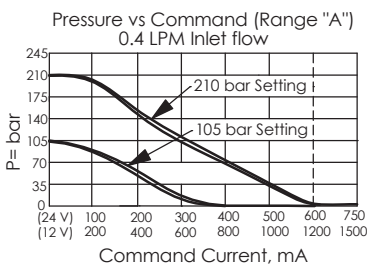
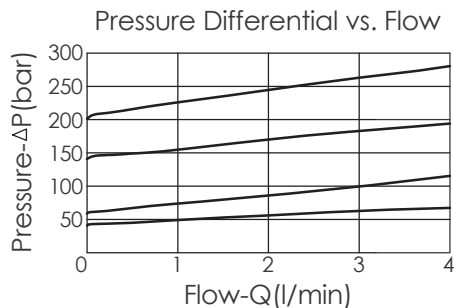
- Maximum Valve Leakage at Reseat: 25 c.c./min
- Back pressure on the tank port (port 2) is directly additive at a 1:1 ratio to valve setting
- Hysteresis with DC input < 8%
- Hysteresis with dither < 4%
- Linearity with dither < 2%
- Dither should be adjustable between 80-300Hz (Recommended dither frequency 140Hz)
- Reseat exceeds 85% of cracking pressure.

X	OPERATION
2D	2 Ports · 22 Watt. Coil $\phi 19$ mm tube

Y	HIGH PRESSURE ADJUSTMENT RANGES
A	210-105 bar (140 bar Standard Setting)
B	105-55 bar (70 bar Standard Setting)
D	55-20 bar (28 bar Standard Setting)
W	315-210 bar (210 bar Standard Setting)

- High pressure setting with no command.
- The factory pressure setting is based on using with main valve RV11A30CL.
- In order to meet the pressure requirement and reduce the setting inaccuracy, please contact Winner if you need pressure setting and inform the main valve you are going to used with.
- When the back pressure of port 2 increase, it will affect the pressure setting of the valve. For example: the factory pressure setting of PRA8A2DBL is 90 bar, if using with RP10A20W8, the pressure setting will be 107 bar.

Z	OPTIONS
L	Leakproof hex. socket screw. (Standard Type)



PILOT CONTROL VALVE (Electro-Proportional Pilot Relief)

Ordering Code: **PRB-8A-X-Y-Z**

Torque 3-5 Nm

Coil EC-19A

22.2 Hex. (7/8 inch)

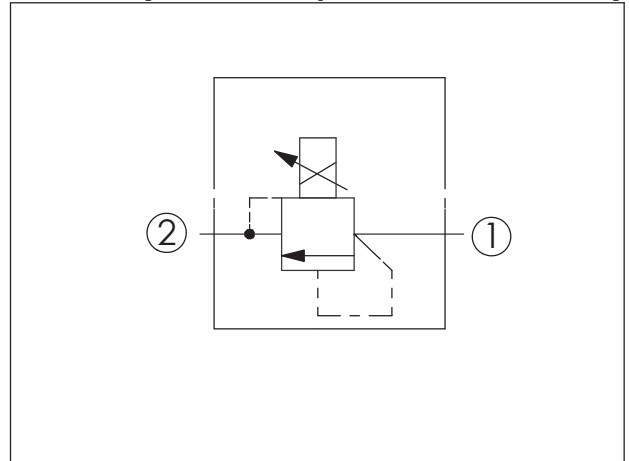
M16X1.5

Outlet ②

Inlet ①

Locating Shoulder

UNIT:mm



TECHNICAL DATA

Max. Operating pressure: 350 bar

Rated flow: 1 l/min

Cavity-Tooling: 8A-2

Installation torque: 27-33 Nm

Weight: 0.16 kg (Without Coil)

Coils must be ordered separately

Maximum Valve Leakage at Reseat: 25 c.c./min
Back pressure on the tank port (port 2) is directly additive at a 1:1 ratio to valve setting

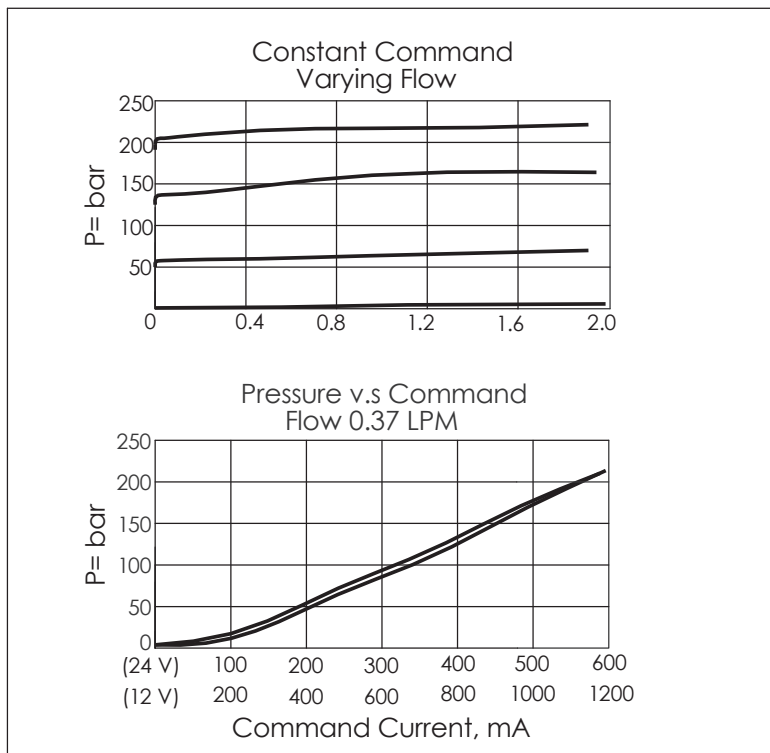
Hysteresis with DC input < 8%

Hysteresis with dither < 4%

Linearity with dither < 2%

Dither should be adjustable between 80-300Hz
(Recommended dither frequency 140Hz)

Reseat exceeds 85% of cracking pressure.



X	OPERATION	
2D	2 Ports · 22 Watt. Coil ∅ 19 mm tube	

Z	OPTIONS	
N	Non-adjustable	
M	Manual Override	
P	Push Style Manual Override	

Y	CONTROL PRESSURE RANGES	
A	20 to 210 bar	
B	10.5 to 105 bar	
D	3.5 to 50 bar	
W	35 to 350 bar	

CENTRALA ELBLĄG

Ul. Rawska 19B
82-300 Elbląg

tel. /+48/ 55 625 51 00

fax /+48/ 55 625 51 01

Dział Handlowy

tel. /+48/ 55 625 51 51

elblag@hydropress.pl



www.hydropress.pl

ODDZIAŁ GDAŃSK

tel. /+48/ 55 625 51 21

fax /+48/ 55 625 51 22

ODDZIAŁ RUMIA

tel. /+48/ 58 679 34 15

fax /+48/ 55 625 51 25

ODDZIAŁ TYCHY

tel. /+48/ 32 787 52 88

fax /+48/ 55 625 51 38

ODDZIAŁ OLSZTYN

tel. /+48/ 89 532 01 05

fax /+48/ 89 715 21 42

ODDZIAŁ WARSZAWA

tel. /+48/ 22 468 86 97

fax /+48/ 55 625 51 32

BIURO WE WROCŁAWIU

tel. /+48/ 782 838 000

fax /+48/ 55 625 51 35

BIURO W KIELCACH

tel. /+48/ 885 995 501

fax /+48/ 55 625 51 01

BIURO W KRAKOWIE

tel. /+48/ 885 995 019

fax /+48/ 55 625 51 01

BIURO W OPOLU

tel. /+48/ 885 995 011

fax /+48/ 55 625 51 01

BIURO W BYDGOSZCZY

tel. /+48/ 790 222 771

fax /+48/ 55 625 51 01

BIURO W BIAŁYMSTOKU

tel. /+48/ 89 532 01 05

fax /+48/ 89 715 21 42

BIURO W ŁODZI

tel. /+48/ 609 221 421

fax /+48/ 89 715 21 42