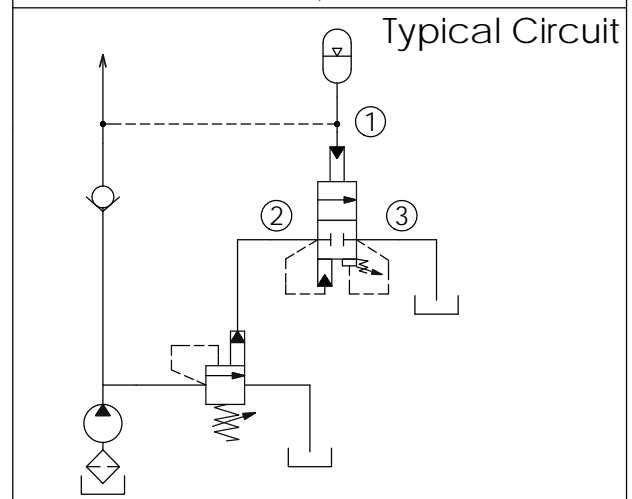
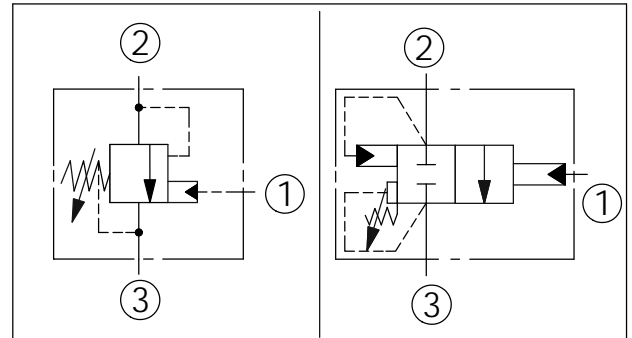
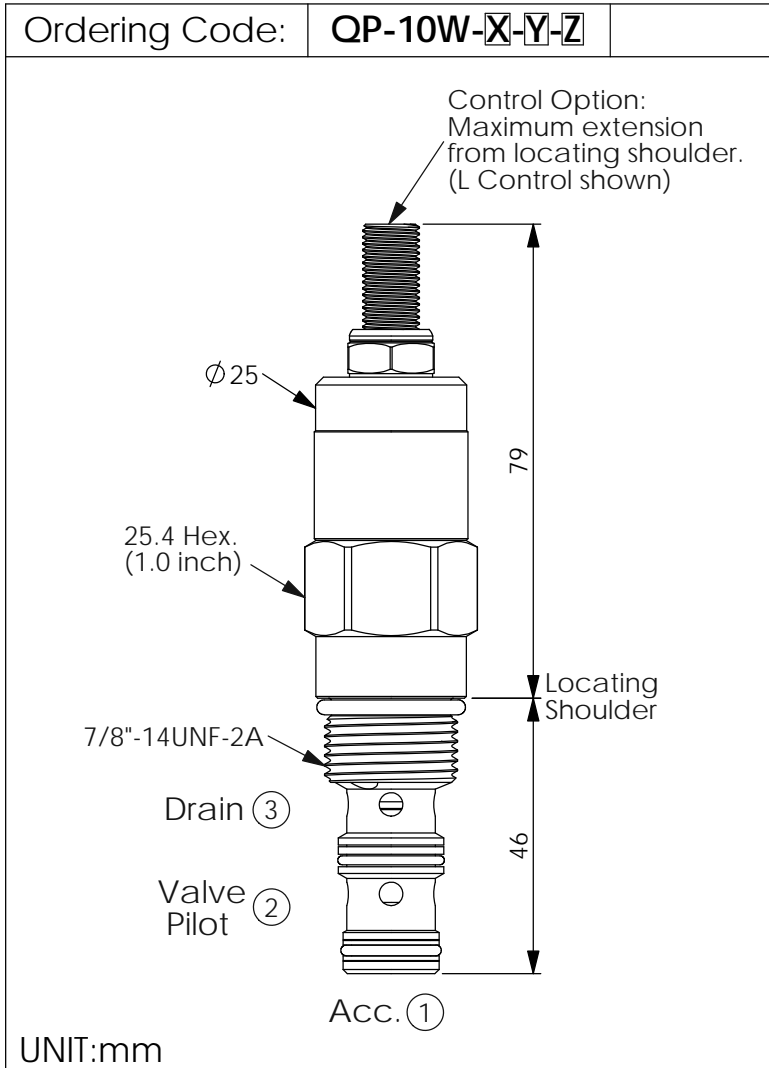




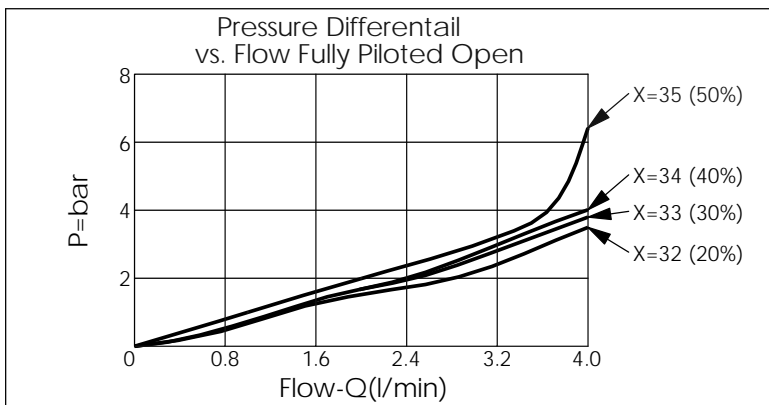
ZAWORY NABOJOWE

Circuit Savers

ACCUMULATOR SENSE, PUMP UNLOAD VALVE - PILOT CAPACITY



TECHNICAL DATA	
Max.Operating pressure:	350 bar
Rated flow:	4 l/min
Cavity-Tooling:	10W-3
Installation torque:	35-45 Nm
Weight:	0.25 kg
Note: Careful consideration should be given when selecting an adjustment range. System pressure drops and flows tend to affect the operation of unloading valves.	



Y	SPRINGS	
	ADJUSTMENT RANGES	
A	70 to 210 bar	(70 bar Standard Setting)
B	30 to 105 bar	(70 bar Standard Setting)
D	18 to 55 bar	(25 bar Standard Setting)
W	100 to 280 bar	(210 bar Standard Setting)

X	OPERATION	
31	10% Nominal Differential	
32	20% Nominal Differential	
33	30% Nominal Differential	
34	40% Nominal Differential	
35	50% Nominal Differential	

Z	OPTIONS	
L	Leakproof hex. socket screw.	

Ordering Code: **QP-11A-X-Y-Z**

Control Option:
Maximum extension
from locating shoulder.
(L Control shown)

64

Ø19

22.2 Hex.
(7/8 inch)

Drain ③

M20x1.5

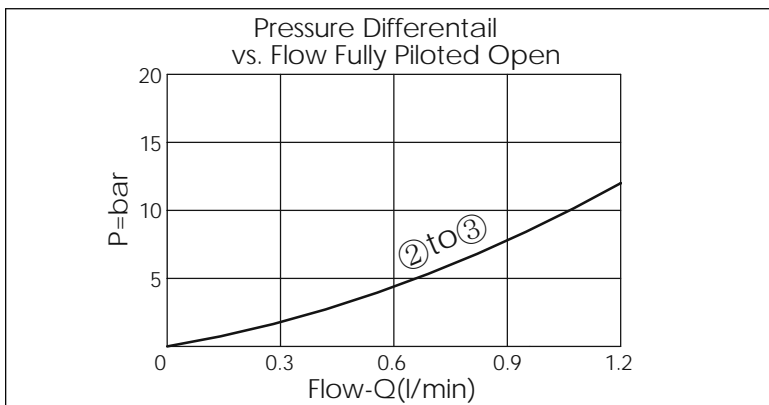
Valve Pilot ②

Locating
Shoulder

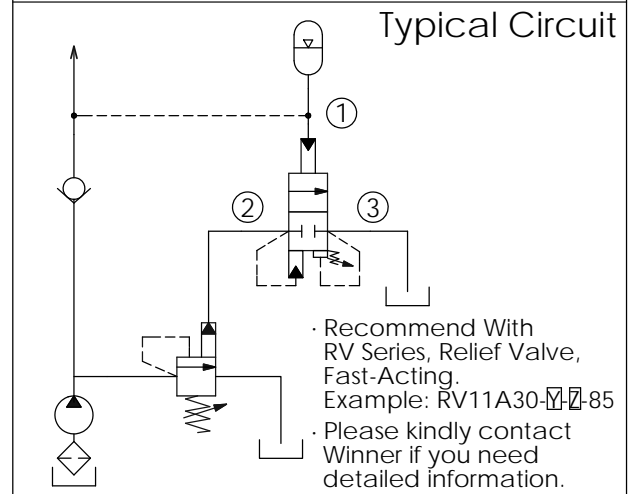
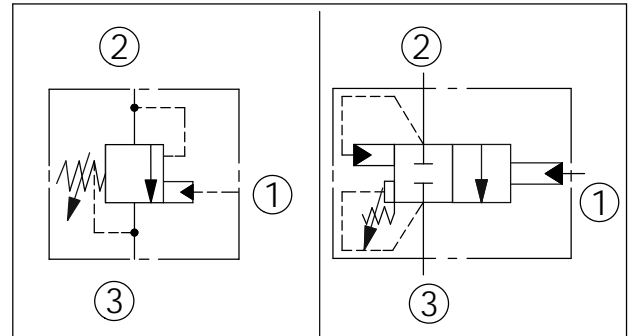
35.1

Acc. ①

UNIT:mm



Y	SPRINGS	
	ADJUSTMENT RANGES	
A	70-210 bar	(70 bar Standard Setting)
B	35-105 bar	(35 bar Standard Setting)
C	140-350 bar	(140 bar Standard Setting)
D	18-55 bar	(18 bar Standard Setting)

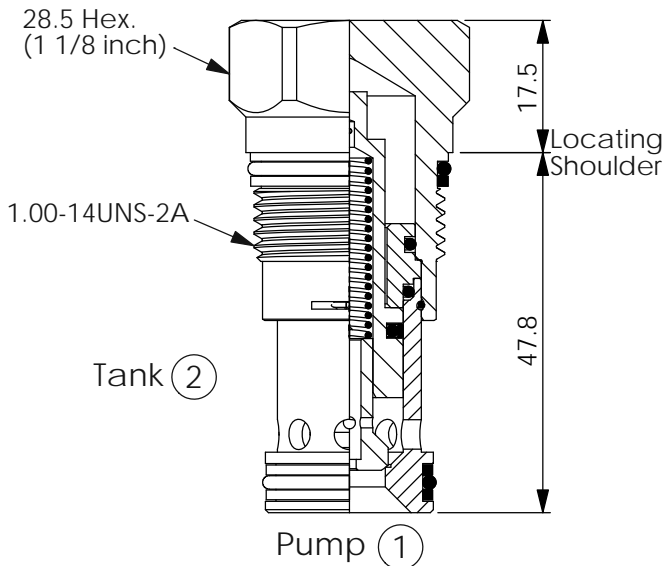


TECHNICAL DATA		
Max.Operating pressure:	350 bar	
Rated flow:	0.8	l/min
Cavity-Tooling:	11A-3	
Installation torque:	40-50	Nm
Weight:	0.16	kg
Note: Careful consideration should be given when selecting an adjustment range. System pressure drops and flows tend to affect the operation of unloading valves.		

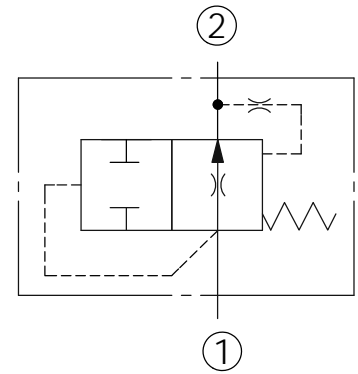
X	OPERATION	
3A	15% Nominal Differential	
32	20% Nominal Differential	
33	30% Nominal Differential	
35	50% Nominal Differential	

Z	OPTIONS	
L	Leakproof hex. socket screw.	

Ordering Code: **NQ-3A-X-Y-Z**



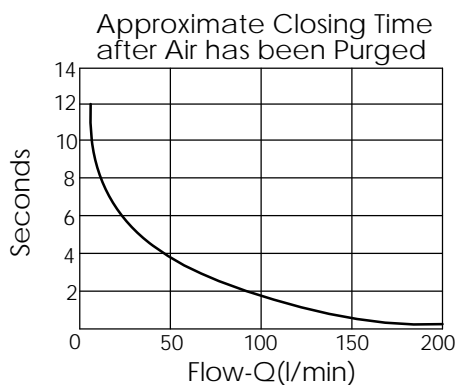
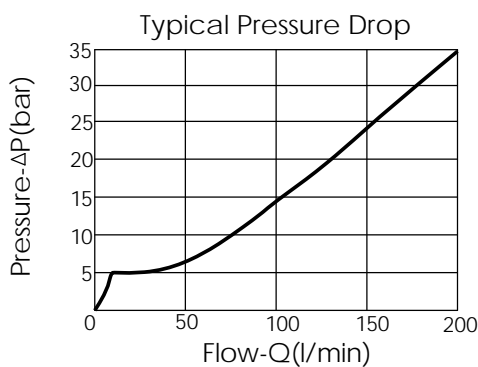
UNIT:mm



TECHNICAL DATA

Max. pressure:	350	bar
Rated flow:	15-200	l/min
Cavity-Tooling:	3A-2	
Installation torque:	60-70	Nm
Weight:	0.18	kg

Air-bleed and start-up valves require a minimum of 15 L/min. flow rate 5.5 bar system pressure. The valve will re-open when system pressure falls below 1.7 bar. After air been purged, closing times vary from approximately 12 seconds at 15 L/min. to 0.5 seconds at 200 L/min.



X	OPERATION	
20	Standard Type	

Y	FLOW RANGE	
A	15 to 200 LPM	

Z	OPTIONS	
N	Non-adjustable	

CENTRALA ELBLĄG

Ul. Rawska 19B
82-300 Elbląg

tel. /+48/ 55 625 51 00

fax /+48/ 55 625 51 01

Dział Handlowy

tel. /+48/ 55 625 51 51

elblag@hydropress.pl



www.hydropress.pl

ODDZIAŁ GDAŃSK

tel. /+48/ 55 625 51 21

fax /+48/ 55 625 51 22

ODDZIAŁ RUMIA

tel. /+48/ 58 679 34 15

fax /+48/ 55 625 51 25

ODDZIAŁ TYCHY

tel. /+48/ 32 787 52 88

fax /+48/ 55 625 51 38

ODDZIAŁ OLSZTYN

tel. /+48/ 89 532 01 05

fax /+48/ 89 715 21 42

ODDZIAŁ WARSZAWA

tel. /+48/ 22 468 86 97

fax /+48/ 55 625 51 32

BIURO WE WROCŁAWIU

tel. /+48/ 782 838 000

fax /+48/ 55 625 51 35

BIURO W KIELCACH

tel. /+48/ 885 995 501

fax /+48/ 55 625 51 01

BIURO W KRAKOWIE

tel. /+48/ 885 995 019

fax /+48/ 55 625 51 01

BIURO W OPOLU

tel. /+48/ 885 995 011

fax /+48/ 55 625 51 01

BIURO W BYDGOSZCZY

tel. /+48/ 790 222 771

fax /+48/ 55 625 51 01

BIURO W BIAŁYMSTOKU

tel. /+48/ 89 532 01 05

fax /+48/ 89 715 21 42

BIURO W ŁODZI

tel. /+48/ 609 221 421

fax /+48/ 89 715 21 42