



## SM 50 SE



### TECHNICAL SPECIFICATIONS

|  |                   |
|--|-------------------|
| <b>Max hose size</b>                     | 2" 2SN, 1½" 4SH   |
| <b>Crimping force (kN):</b>              | 1800              |
| <b>Max crimping Ø (mm):</b>              | 85                |
| <b>Max opening (mm):</b>                 | die diameter + 32 |
| <b>Standard motor:</b>                   | 4 kW 400V 3-Ph    |
| <b>Control</b>                           | Digital           |
| <b>Master dies opening / Length(mm):</b> | 107/105           |
| <b>Crimping range (mm):</b>              | 6 – 85            |
| <b>Weight (kg)</b>                       | 168 (without oil) |
| <b>Dimensions (LxWxH mm)</b>             | 645 x 470 x 600   |
| <b>Quick Change-set</b>                  | Optional          |
| <b>Stand for machine</b>                 | Optional          |
| <b>Foot pedal</b>                        | Optional          |

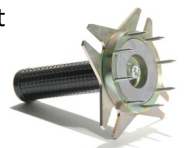
### DIE SET OPTIONS

|                         | <b>Range (mm)</b> | <b>Length</b> |
|-------------------------|-------------------|---------------|
| <b>38-06</b>            | 6-16              | 45            |
| <b>38-08</b>            | 8-18              | 45            |
| <b>38-11</b>            | 11-21             | 45            |
| <b>38-14</b>            | 14-24             | 45            |
| <b>38-17</b>            | 17-27             | 45            |
| <b>38-20</b>            | 20-30             | 55            |
| <b>38-23</b>            | 23-33             | 55            |
| <b>38-26</b>            | 26-36             | 55            |
| <b>38-30</b>            | 30-40             | 75            |
| <b>38-34</b>            | 34-44             | 75            |
| <b>38-39</b>            | 39-49             | 85            |
| <b>38-45</b>            | 45-55             | 85            |
| <b>38-51</b>            | 51-61             | 85            |
| <b>38-57</b>            | 57-67             | 90            |
| <b>38-63</b>            | 63-73             | 90            |
| <b>38-67</b>            | 67-77             | 90            |
| <b>With master dies</b> | 75-85             | 105           |

### ACCESSORIES



Quick Change Set including storage rack and tool



Solid stand with ability to mount Quick Change Set and machine



Foot pedal