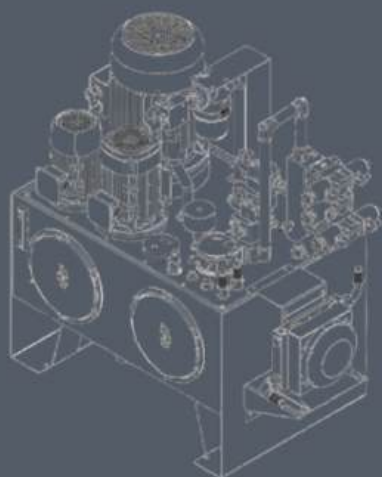
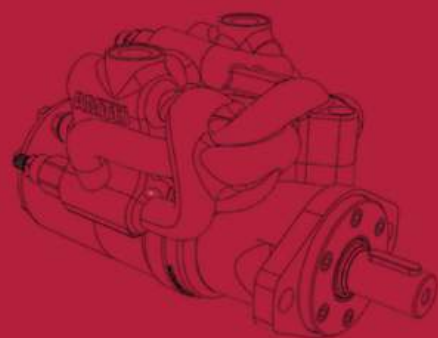




**28 years
in business**



PRODUCT GUIDE 2025



**complete
solutions
for hydraulic
industry**

WELCOME TO THE WORLD OF POWER HYDRAULICS

HYDROPRESS has been providing complete solutions for the hydraulic industry in Poland over 28 years.

Our philosophy is clear - to be the most complete supplier of high-quality hydraulic components together with the finest technical service that can fulfill even the most challenging projects.

We offer the largest range of hydraulic components and professional design, consultation, and service, compliant with the ISO 9001 standard. Cooperation with well-known brands guarantees high-quality products and effective deliveries.

**Be ahead of your competitors.
Choose quality. Choose HYDROPRESS. Continuously since 1997.**



INDUSTRY AREAS

With over **28 years of experience**, we keep developing our own sales network and launching new distribution channels. All this to support our business partners' operations in the most effective way.

We currently supply hydraulic components for many industries: shipbuilding, offshore, railway and road transport, forestry and agriculture, chemical, food, mining, paper, energy, and metallurgical industries, among others.



HYDROPRESS IN NUMBERS



28 YEARS OF EXPERIENCE



9+ LOCATIONS IN POLAND
1 BRANCH IN UKRAINE



7000 M² MAIN WAREHOUSE SPACE
(ELBLĄG, POLAND)



30 000+ PRODUCTS AVAILABLE
FROM STOCK



2000 M² RESEARCH AND DEVELOPMENT
CENTRE (RUMIA, POLAND)



100+ EMPLOYEES



SEE MORE



RESEARCH AND DEVELOPMENT CENTER

The Research and Development Centre was established at our branch in Rumia. Where we conduct research into the implementation of innovative technologies and materials.

THE LARGEST METAL 3D PRINTING SYSTEM IN POLAND

EOS M400 – an industrial large-scale metal 3D printing machine with a working area of 400x400x400 mm. Available materials include:

- Aluminium alloys (AlSi10Mg, AlF357)
- Tool steel (MS1, CX)
- Stainless steel (316L, Super Duplex)

Metal 3D printing allows for the production of geometries that are difficult or even impossible to produce using other methods, which provides greater freedom in designing innovative solutions.



AMTH Additive Manufacturing
Technology
by Hydropress

R&D LABORATORIES

- DMLS / metal 3D printing
- FDM printing
- METROLOGY
- CORROSION PROTECTION
- CNC MACHINES
for traditional machining,
postprocessing
- DIAGNOSTIC WORKSTATIONS
for power hydraulics

see more
R&D laboratories / YT



EXAMPLE OF OPTIMIZATION

The weight of the metal 3D printed hydraulic component has been reduced by almost 70% compared to the product made by traditional methods, while maintaining all functionality and performance.



standard aluminum manifold
manufactured by CNC machining

weight: 0,95 kg



volume-optimized 3D printed manifold
from AlSi10Mg aluminum alloy

weight: 0,30 kg

CONTENTS

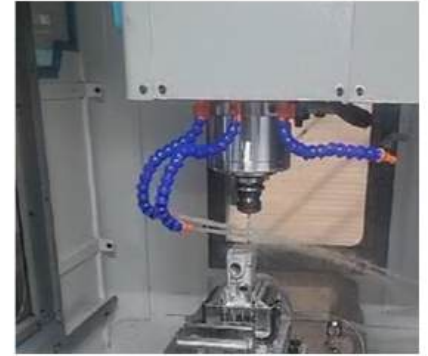
4/5/6	SERVICE AND PRODUCTION DEPARTMENT
7	HYDRAULIC FITTINGS
7	HYDRAULIC AND PNEUMATIC TUBES
8	TUBE CLAMPS
8	HOSE FITTINGS
9	HYDRAULIC HOSES AND ACCESORIES
10	INDUSTRIAL HOSES
10	HOSE CLEANING SYSTEM - HP CLEAN
11	HYDRAULIC MOTORS
11	QUICK RELEASE COUPLINGS
12	HYDRAULIC PUMPS
12	HYDRAULIC TANKS AND ACCESORIES
13/14	HYDRAULIC POWER & STEERING
15	CETOP MANIFOLDS AND SUBPLATES
15	ELECTRIC MOTORS AND ACCESORIES
16	CARTRIDGE VALVES
16	BALL VALVES
17	MOBILE DIRECTIONAL CONTROL VALVES
18	HEAT EXCHANGERS
18	HYDRAULIC ACCUMULATORS
19	FILTRATION
19	MEASURING ACCESSORIES
20	MACHINES AND TOOLS
21	WALTECH / WALFORM TUBE SHAPING DEVICE

SERVICE AND PRODUCTION DEPARTMENT COMPONENT MANUFACTURING

PRODUCTION OF HYDRAULIC COMPONENTS

- Design and production of valve blocks, manifolds
- Design and production of connection elements, supports
- Design and production of hydraulic cylinder components
- Assembly of pump units, hydrostatic drives, etc
- CNC milling and turning services
- Wire EDM cutting service
- 3D metal DMLS / SLM and FDM & SLS printing

see more



FLEXIBLE HOSES – HYDRAULIC AND INDUSTRIAL HOSES

- Manufacturing and assembly of flexible hydraulic hoses according to our in-house designs or customer specifications
- Hose crimping with fittings compliant with ISO/DIN/SAE standards
- Production of industrial hoses (for water, fuels, oils, chemicals, bulk materials, concrete, sandblasting, etc.)
- Repair and reproduction of hydraulic, pneumatic, and industrial hoses
- Hose marking, hose protection systems, pressure testing



SERVICE AND PRODUCTION DEPARTMENT COMPONENT MANUFACTURING

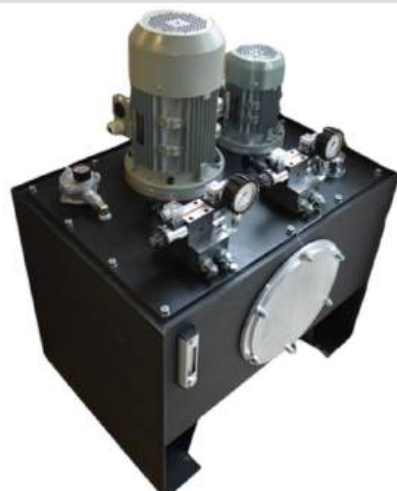
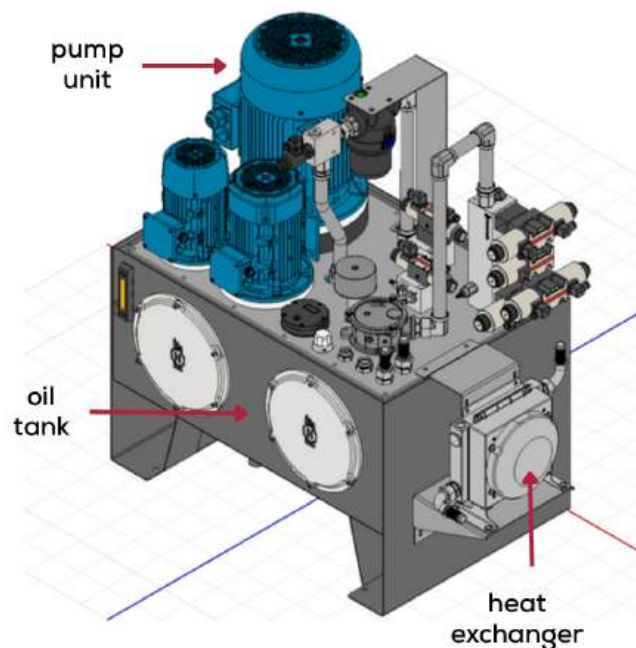
HPL / HYDRAULIC & PNEUMATIC LINES, TUBE CONNECTION SYSTEMS AND PROCESSING

- Tube processing service in the Walform/Waltech system (certified safe tube connection systems; high accuracy, repeatability, small to large series)
- Tube processing service with cutting ring fittings systems (Ermeto, EO, EO2 types)
- Tube processing service for flared fittings according to SAE J514 / JIC 37°
- Bending of precision steel and stainless-steel tubes (high accuracy, repeatability, small to large series)
- Installation of tubing systems in machines and industrial facilities



HYDRAULIC POWER UNITS

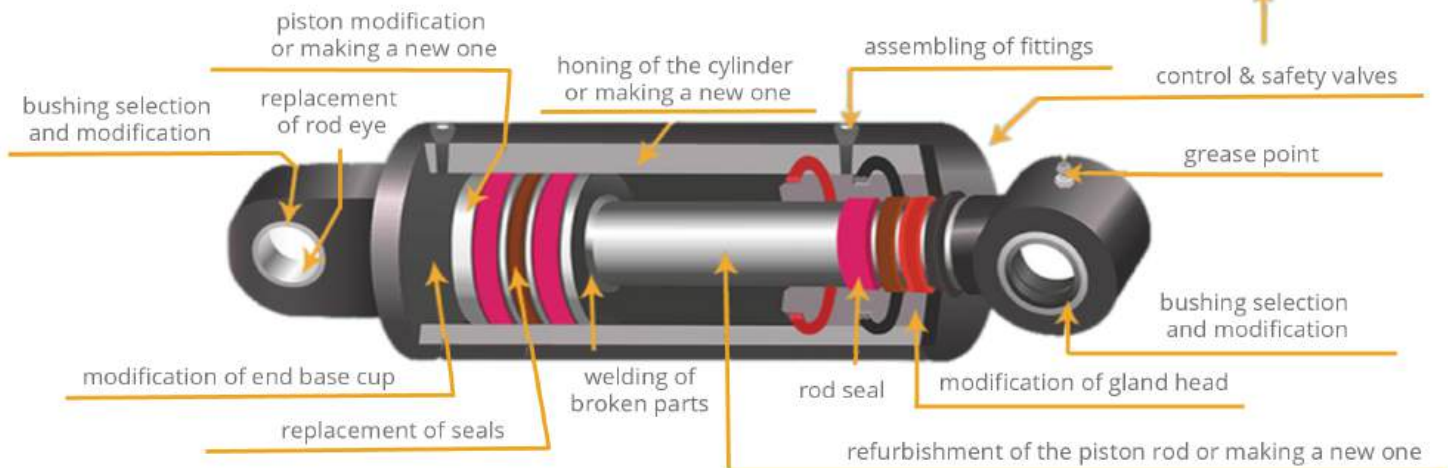
- Design and production of hydraulic power units based on in-house or customer-provided documentation
- Integration of power units with machinery and industrial systems
- Modernization of hydraulic control systems in existing power units
- Preparation of complete technical documentation for new and existing hydraulic power units ac.to 2006/42/WE



SERVICE AND PRODUCTION DEPARTMENT COMPONENT MANUFACTURING

HYDRAULIC CYLINDERS

- Custom manufacturing of hydraulic cylinders
- Service and refurbishment of hydraulic cylinders



SERVICE AND PRODUCTION DEPARTMENT DIAGNOSTICS AND TECHNICAL SUPPORT

- Complete diagnostics of hydraulic systems. We have advanced measuring equipment that allows us to analyze pressure, flow, temperature, vibrations, RPM, thermal imaging for most types of hydraulic devices
- Analysis of pump and valve operation, detection of malfunctions and drops in efficiency
- Endoscopic analysis of unreachable parts of hydraulic systems
- We can analyze the causes of failures and repair them, which allows us to provide you with a stable operation
- Monitoring of oil consumption, analysis of cleanliness (ISO 4406 standard), sampling and the possibility of testing cleanliness on-site
- Design and optimization of hydraulic systems in terms of efficiency
- Service and refurbishment of hydraulic cylinders, replacement of seals, cleaning, and air bleeding of systems
- Refurbishment of hydraulic bladder and piston accumulators, nitrogen charging
- Let us help you assemble components, install hydraulic tubes, replace hydraulic lines, and repair and service your power hydraulic systems
- A large stock of spare parts and hydraulic components directly from one of the largest hydraulics warehouses in Poland means that we can quickly repair and solve your technical problems
- Technical audits, modernizations, and training for staff
- Possibility of service and post-warranty contracts
- CAD/CAM design and programming
- MTT: metal testing services including elemental analysis, mechanical testing, and metallographic testing (hardness)
- Metal heat treatment: Stress Relieving, Annealing, Hardening, Quenching

HYDRAULIC FITTINGS

HYDRAULIC CONNECTIONS



NORMS:
DIN, BSP, JIC, ORFS
SAE AND CETOP FLANGE
WELDING
STECKO



fittings materials: stainless steel, carbon steel, brass



HYDRAULIC AND PNEUMATIC TUBES

SEAMLESS COLD DRAWN PRECISION STEEL TUBES

CARBON STEEL
GALVANIZED CARBON STEEL TUBES
STAINLESS STEEL TUBES



MANNESMANN



TUBE CLAMPS

A COST EFFECTIVE SOLUTION FOR A SIMPLE BUT SECURE FASTENING OF TUBES AND HOSES

A serie - light
B serie - twin-tube clamp
C serie - heavy
O serie - single and double clamps
HSRS serie
RUB, KU, FR serie



Clamp bodies are made of various plastics (polipropylen, polyamid), rubber or aluminium. Metal parts are also available in stainless steel.



HOSE FITTINGS

HYDRAULIC HOSE ASSEMBLIES



ACC. TO NORMS
DIN, BSP, JIC, ORFS
SAE, AND CETOP FLANGE
WELDING FITTINGS
STECKO FITTINGS



fittings materials: stainless steel, carbon steel, brass



HYDRAULIC HOSES AND ACCESORIES

HYDRAULIC PRESSURE HOSES

HIGH PRESSURE HYDRAULIC HOSES, WITH 1, 2, 4 OR 6 STEEL OR TEXTILE BRAIDS
HIGH PRESSURE HOSES FOR JET CLEANERS AND WATERBLAST
THERMOPLASTIC HOSES WITH HIGH TENSILE STEEL OR TEXTILE BRAID
PTFE SMOOTHBORE OR CONVOLUTED HOSES WITH STAINLESS STEEL BRAID
LOW PRESSURE SPIRAL BRAIDED HOSES

HYDROPRESS TRACKING SYSTEM - HYDRAULIC HOSE IDENTIFICATION SYSTEM

ACCESORIES:

HP SAFE - BURST PROTECTION

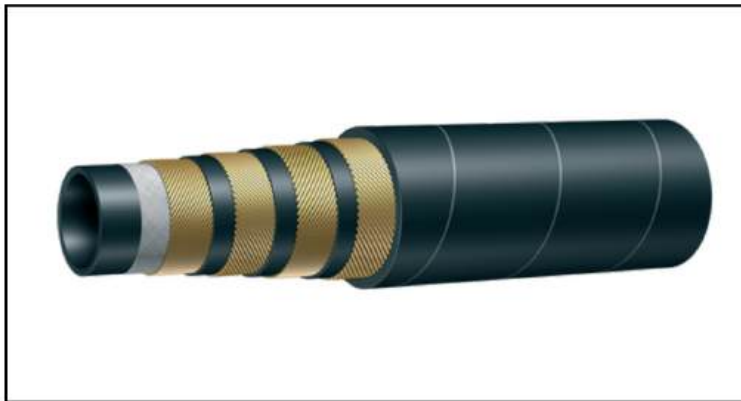
PLASTIC AND STEEL WIRE SPIRAL HOSE GUARDS

<<Conflex>>

ALFAGOMMA

DUNLOPHIFLEX

SEMPERIT



NEW FLEXIBLE HOSE WITH UP TO 50% BETTER BEND RADIUS
COMPARED TO SAE 100R 12/13/14 STANDARD



INDUSTRIAL HOSES

RUBBER, METAL AND PCV HOSES

STEAM, HOT WATER AND AIR HOSES
GAS AND WELDING HOSES
WATER, BEVERAGES AND LIQUID FOOD HOSES
AGRICULTURE HOSES
OIL HOSES
DUCTING AND VENTILATION HOSES
BULK MATERIAL, SANDBLAST, CONCRETE AND PLASTER HOSES
ACID, CHEMICAL AND GENERAL PURPOSE HOSES
CARGO TRANSFER HOSES
COMPRESSED AIR HOSES

ALFAGOMMA



HOSE CLEANING SYSTEM – HP CLEAN

CLEAN HYDRAULIC LINES AND PREVENT PREMATURE WEAR
AND SPONTANEOUS FAILURES

HP CLEAN

RIGID ALUMINIUM BODY PISTOL
DIFFERENT SIZES OF CLEANING SOFT BULLETS
SET OF NOZZLES FOR ALL COMMON TUBES AND HOSES
COMPACT METAL CASE FOR EASY TRANSPORT



HYDRAULIC MOTORS



INDUSTRIAL AND MOBILE APPLICATIONS

GEAR MOTORS

AXIAL PISTON FIXED AND VARIABLE
DISPLACEMENT MOTORS

ORBITAL MOTORS

HYDRAULIC STEERING UNITS



QUICK RELEASE COUPLINGS

FAST HYDRAULIC LINE CONNECTIONS



Stucchi®

ALFAGOMMA

FLAT- FACE COUPLINGS
POPPET COUPLINGS
PUSH- PULL COUPLINGS
MULTICOUPLINGS
SPILL PREVENTION PLUGS
ALUMINIUM HYDRAULIC HANDLE / GRIP - HP GRIP



available quick couplings materials: stainless steel, carbon steel, brass



HYDRAULIC PUMPS



EXTERNAL AND INTERNAL GEAR UNITS
FIXED AND VARIABLE DISPLACEMENT VANE UNITS
FIXED AND VARIABLE DISPLACEMENT AXIAL PISTON UNITS
HIGH PRESSURE HAND PUMPS
MULTIPLE STAGE UNITS
RADIAL PISTON PUMPS
GEAR TYPE FLOW DIVIDERS
WIDE RANGE OF SPARE PARTS
PTO POMPS



HYDRAULIC TANKS AND ACCESORIES

INTEGRAL HYDRAULIC POWER PACKS AND COMPONENTS

BELLOUSING AND COUPLINGS
ANTIVIBRATION MOUNTING ELEMENTS
PUMP FIXTURE
MANHOLE COVERS
TEMPERATURE AND LEVEL GAUGES
FILLER BREATHERS
ALUMINIUM AND STEEL HYDRAULIC TANKS
GASKETS



HYDRAULIC POWER & STEERING

INDUSTRIAL APPLICATIONS

Winner

NOVA
HYDRAULICS

HYDROPRESS
POWER HYDRAULICS

VICKERS
by Danfoss

DIRECTIONAL CETOP VALVES

direct operated spool valves
pilot operated spool valves

PRESSURE VALVES

relief, direct and pilot operated valves
reducing direct and pilot operated valves
sequence direct and pilot operated valves
sandwich and subplate mounted types

FLOW CONTROL VALVES

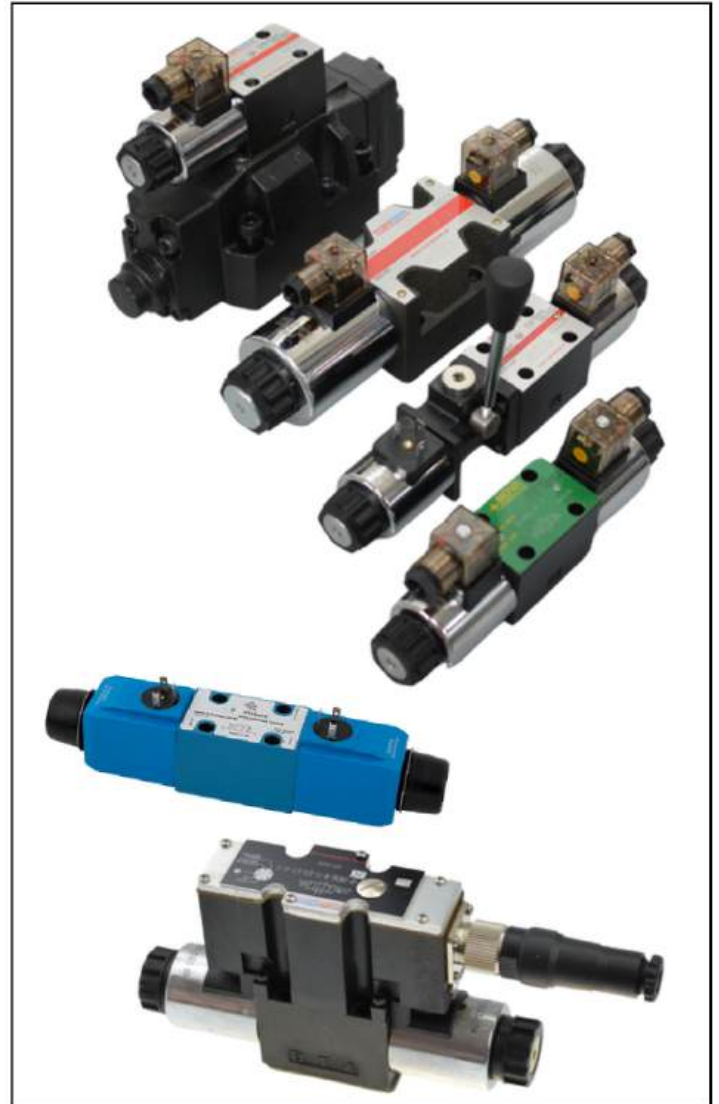
throttle valves
throttle - check valves
pressure compensated flow regulators
sandwich and line mounted types

PROPORTIONAL VALVES

CETOP directional proportional valves
pressure control proportional valves
flow control proportional valves

ADDITIONAL COMPONENTS

adjustable pressure switches
pressure sensors
measuring point selectors



HYDRAULIC POWER & STEERING

MOBILE APPLICATIONS



CHECK VALVES
PILOT OPERATED CHECK VALVES
COUNTER - BALANCE AND OVER CENTER VALVES
UNLOADING SEQUENCE VALVES
THROTTLE AND THROTTLE - CHECK VALVES
FLOW DIVIDERS AND COMBINERS
FLOW REGULATORS
6/2 ELECTRICALLY OPERATED DIVIDERS



CETOP MANIFOLDS AND SUBPLATES

INTEGRATED HYDRAULIC CONTROL VALVE BLOCKS



CETOP MULTISTATION MANIFOLDS
CROSSING CETOP PLATES
BLANKING CETOP PLATES
LINE VALVE SUBPLATES
ACCESORIES

custom made solutions available materials: aluminum,
stainless steel, carbon steel



ELECTRIC MOTORS AND ACCESORIES

ELECTRIC AND ELECTRONICS CONTROL PARTS



AC MOTORS, DC MOTORS, STARTERS
1&3 PHASE MOTORS
VALVE CONTROL SOLENOIDS AND COILS
ELECTRIC CONNECTORS
AMPLIFIER CARDS



CARTRIDGE VALVES

MOBILE AND INDUSTRIAL APPLICATIONS

Winner

CHECK VALVES
PILOT OPERATED CHECK VALVES
COUNTER - BALANCE AND OVER CENTER VALVES
UNLOADING SEQUENCE VALVES
THROTTLE AND THROTTLE-CHECK VALVES
FLOW DIVIDERS AND COMBINERS
FLOW REGULATORS
SOLENOID OPERATED SPOOL AND SEAT VALVES
INTEGRATED CIRCUITS FOR CETOP AND LINE MANIFOLDS



BALL VALVES

SHUT-OFF AND CONTROL TECHNOLOGY

2, 3, 4- WAYS BALL VALVES
BALL VALVES WITH BSP, NPT, UNF
AND SAE CONNECTION
BALL VALVES WITH STECKO CONNECTIONS
BALL VALVES FOR MANIFOLD MOUNTING

available materials: stainless steel, carbon steel,
brass, aluminium

MHA ZENTGRAF
FlowControl Technology

RÖTELMANN

EFFEBI



MOBILE DIRECTIONAL CONTROL VALVES

MONOBLOCKS AND SECTIONAL CONTROL VALVES

MobiTec

SPOOL VALVES FOR THE CONTROL OF SYSTEMS
IN MOBILE TECHNOLOGY

UP TO 7 SECTIONS MONOBLOCK CONTROL VALVES

- manually operated
- electrically operated
- electro-hydraulically operated
- hydraulically operated
- pneumatically operated
- mechanically operated

UP TO 12 SECTIONS SECTIONAL CONTROL VALVES

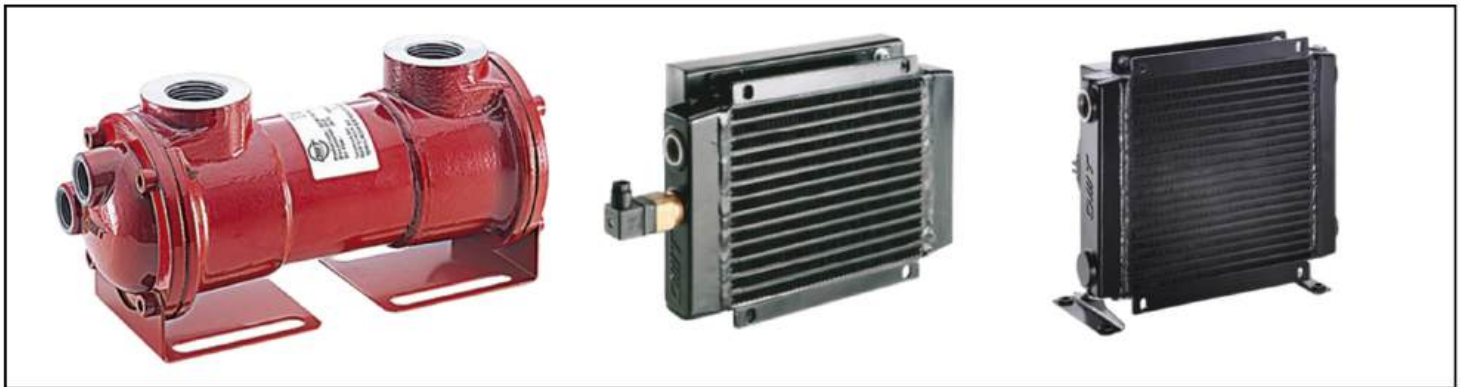
PROPORTIONAL SECTIONAL CONTROL VALVES



HEAT EXCHANGERS

INDUSTRIAL FLUID HEATER AND COOLERS

GASKETED PLATE-AND-FRAME HEAT EXCHANGERS
HYDRAULIC OIL COOLERS
WELDED PLATE-AND-BLOCK HEAT EXCHANGERS
BRAZED PLATE HEAT EXCHANGERS
FUSION-BONDED PLATE HEAT EXCHANGERS
AIR COOLED LIQUID COOLERS



HYDRAULIC ACCUMULATORS

FLUID POWER STORAGE

BLADDER ACCUMULATORS
DIAPHRAGM ACCUMULATORS
PISTON ACCUMULATORS
CLAMPS, BRACKETS
SAFETY BLOCKS
GAS FILLING ACCESORIES



FILTRATION

HYDRAULIC OIL FILTRATION

SUCTION FILTERS
RETURN LINE FILTERS
SPIN-ON FILTERS
PRESSURE FILTERS
PROCESS FILTERS
OFF-LINE (BY-PASS) FILTRATION UNITS
AIR FILTERS AND DEHUMIDIFIERS



ProMicron



MEASURING ACCESSORIES

PRESSURE AND TEMPERATURE MONITORING TECHNOLOGY

PRESSURE GAUGES
HOSES AND CONNECTORS
MINIMASS TYPE FITTINGS AND ACCESORIES
FLUID LEVEL AND TEMPERATURE GAUGES
FLOATING SWITCHES
GAUGE ISOLATOR GAUGES
CLAMPS, BRACKETS AND COVERS
PRESSURE SENSORS

WIKAI

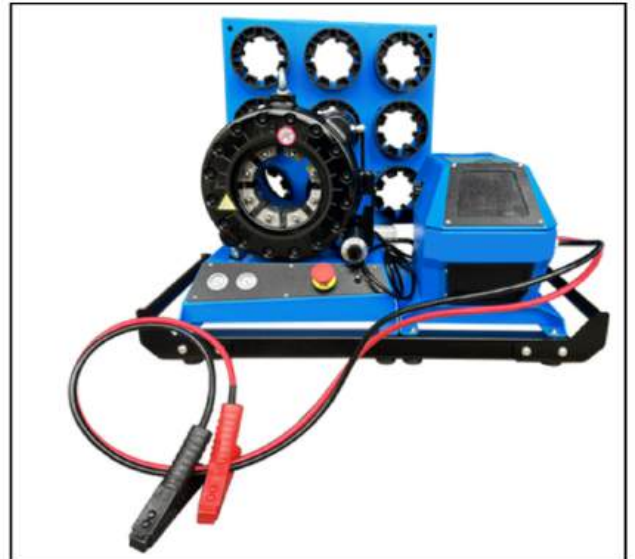
EUROSWITCH
excellence in sensors



MACHINES AND TOOLS

HOSE PROCESSING

HOSE ASSEMBLY MANUFACTURING EQUIPMENT
VERTICAL AND HORIZONTAL CRIMPING MACHINES
HOSE CUTTING MACHINES
SKIVING DEVICES
HOSE REEL HOLDERS
EMBOSSING AND MARKING MACHINES
PIN- PRICK TOOLS
HOSE TESTING MACHINES



Waltech/ WALFORM tube forming technology

Newest generation machine from the leader in tube end forming system



Waltech

Hydropress Power Hydraulics
is an Authorized Distributor of Danfoss
Waltech products.

How to be a professional tube installer?

Work fast and reliably!

Ask us for a special rental offer



Waltech machine
M-WF385Xplus
(WAL626385)

Stand
(WAL626257)

SPECIFICATION M-WF385Xplus

- Weight: **251 kg**
- Dimensions width / height / depth:
850 x 275 x 990 mm
- Standard voltage: **400 AC**
- Frequency: **50 Hz**
- Power consumption: **2,8 kW**
- Fuse: **16 A**

BENEFITS

- Low weight of the machine
- Ease of operation through an intuitive control panel
- Energy savings through optimized operating temperature control
- Integrated noise reduction system
- Proven technology (more than 1000 units produced)
- full approval certification: marine, offshore, minning, military and many others

see more



ADDITIONAL ACCESSORIES

- Head replacement tools (WAL617090)
- Clamping jaws
- Crimping heads



Attractive rental terms for Hydropress Dealers!

send a request: maszyny@hydropress.pl

COMPANY HEADQUARTERS ELBLĄG

address: Sulimy 2, 82-300 Elbląg, Poland
tel. +48 55 625 51 00 www.hydropress.pl/en

BRANCHES

BRANCH ELBLĄG

tel. +48 55 625 51 51
elblag@hydropress.pl

BRANCH OLSZTYN

tel. +48 89 532 01 05
olsztyn@hydropress.pl

BRANCH GDAŃSK

tel. +48 55 625 51 21
gdansk@hydropress.pl

BRANCH WARSAW

tel. +48 22 468 86 97
warszawa@hydropress.pl

BRANCH RUMIA

tel. +48 58 679 34 15
rumia@hydropress.pl

BRANCH TYCHY

tel. +48 32 787 52 88
tychy@hydropress.pl

OFFICES

BIAŁYSTOK

bialystok@hydropress.pl

KRAKÓW

krakow@hydropress.pl

BYDGOSZCZ

bydgoszcz@hydropress.pl

KIELCE

kielce@hydropress.pl

OPOLE

opole@hydropress.pl

ŁÓDŹ

lodz@hydropress.pl

WROCŁAW

wroclaw@hydropress.pl

RZESZÓW

rzeszow@hydropress.pl

RESEARCH AND DEVELOPMENT CENTER Sobieskiego 35B, 84-230 Rumia, Poland
metal 3D printing: www.amth.pl/en e-mail: office@amth.pl

